



Connells

Bradgate House Billing Road
Northampton



Property Description

Situated in a highly sought-after development, this property offers the perfect balance of convenience and comfort. Whether you are a professional working at the nearby Northampton General Hospital or someone looking for easy access to the vibrant town centre, this apartment delivers an enviable lifestyle.

Accessed via a highly secure video entry system, the building benefits from a serviced lift, ensuring ease of access. Upon entering the apartment, you are greeted by a generous inner hallway leading to the heart of the home: a sprawling sitting/dining room. This bright and airy space is flooded with natural light and features a delightful Juliette balcony—perfect for enjoying your morning coffee.

The well-appointed kitchen is fitted with a range of modern units and fully integrated appliances, complete with a convenient breakfast bar for casual dining.

The sleeping quarters comprise two generous double bedrooms. The master suite benefits from its own private ensuite shower room, providing a touch of luxury. A further family bathroom serves the second bedroom and guests.

The property is set within well-maintained communal gardens, providing a peaceful retreat from the bustle of the town. Added peace of mind comes from secure, allocated off-street parking.



Entrance Porch

Enter via wooden fire door.

Entrance Hall

Two storage cupboards. Intercom and electric radiator.

Lounge / Diner

Two electric wall mounted radiators. Double glazed doors to the Juliet balcony..

Kitchen

Wall and base units. Worksurfaces. Sink and drainer unit. Electric hob with hood over. Integrated appliances. Double glazed window to the rear aspect.

Bedroom One

Double glazed window to the front aspect. Built in wardrobes. Wall mounted electric radiator.

En Suite

Shower cubical, wash hand basin and low level WC. Wall mounted radiator. Double glazed window to the front aspect.

Bedroom Two

Double glazed window the rear aspect. Wall mounted electric radiator.

Bathroom

Bath, wash hand basin and low level WC. Wall mounted radiator. Double glazed window to the front aspect.

Outside

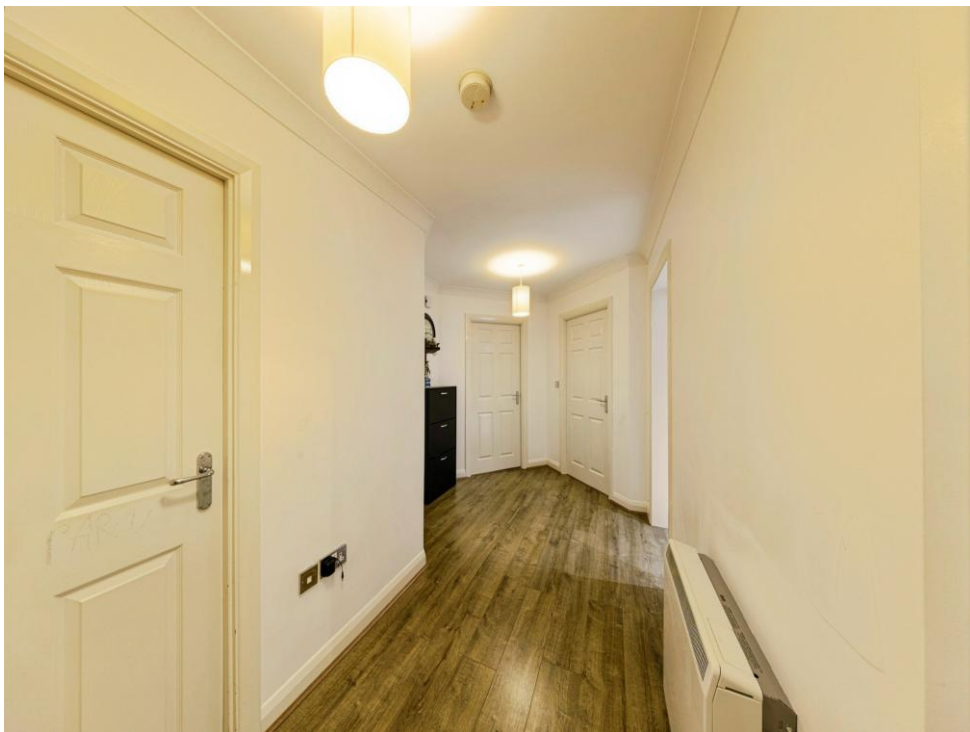
Rear Garden

Communal garden.

Parking

One allocated permit parking space and one visitor parking space.









Total floor area 89.9 m² (968 sq.ft.) approx

This floor plan is for illustrative purposes only. It is not drawn to scale. Any measurements, floor areas (including any total floor area), openings and orientation are approximate. No details are guaranteed, they cannot be relied upon for any purpose and they do not form part of any agreement. No liability is taken for any error, omission or misstatement. A party must rely upon its own inspection(s). Powered by www.propertybox.io



To view this property please contact Connells on

T 01604 638 281
E northampton@connells.co.uk

6 Wood Hill
 NORTHAMPTON NN1 2DA

EPC Rating:
 Awaited

Council Tax
 Band: D

Service Charge: Ask
 Agent

Ground Rent:
 Ask Agent

Tenure: Leasehold

view this property online connells.co.uk/Property/NHT415250

This is a Leasehold property. We are awaiting further details about the Term of the lease. For further information please contact the branch. Please note additional fees could be incurred for items such as Leasehold packs.



1. MONEY LAUNDERING REGULATIONS Intending purchasers will be asked to produce identification documentation at a later stage and we would ask for your co-operation in order that there will be no delay in agreeing the sale. 2. These particulars do not constitute part or all of an offer or contract. 3. The measurements indicated are supplied for guidance only and as such must be considered incorrect. Potential buyers are advised to recheck measurements before committing to any expense. 4. We have not tested any apparatus, equipment, fixtures, fittings or services and it is in the buyers interest to check the working condition of any appliances.

Connells Residential is registered in England and Wales under company number 1489613, Registered Office is Cumbria House, 16-20 Hockliffe Street, Leighton Buzzard, Bedfordshire, LU7 1GN. VAT Registration Number is 500 2481 05.

See all our properties at www.connells.co.uk | www.rightmove.co.uk | www.zoopla.co.uk

Property Ref: NHT415250 - 0004