



Chelsea Park Gardens, Chelsea **SW3**

Chelsea Park Gardens, Chelsea **SW3**

This immaculately presented, low, wide house spans approximately 4,403 sq ft across four floors, offering a luxurious and spacious living environment in the heart of Chelsea.

Upon entering, you are greeted by double doors leading to the expansive drawing room and dining room, which provide green views and open through French doors onto the private garden. A door leads to the generously sized kitchen/conservatory breakfast room, which also opens directly onto the large south-facing garden.

This large south-facing garden is a rare find in Chelsea, providing a private and tranquil outdoor oasis, perfect for relaxation and outdoor activities.



Guide price: £9,500,000

Tenure: Freehold

Local authority: Royal Borough of Kensington and Chelsea

Council tax band: H







On the lower level, there is a large fully equipped gymnasium and full size dance studio which can be easily adapted to a playroom or family room. Adjacent to this room are the Wine Room and luxury Cinema which features six reclining chairs, creating a perfect setting for movie/ sports enthusiasts.

There are two additional bedrooms and a shared bathroom, featuring steam room, perfect for accommodating guests or extended family.

Overlooking the expansive private garden, the main bedroom suite offers ample space and natural light, with a large dressing room and bathroom.

There are two further bedrooms, one en suite and the other served by a separate bathroom.

Additionally, the house includes a home office as well as a utility room with a laundry shoot for added convenience. The house also has the benefit of underfloor heating throughout.

The house further benefits from a fully integrated high-tech audio visual lutron system providing multiple lighting combinations in all rooms as well as a full stereo sound system throughout the property.

A further significant feature of the house is the garage for two cars which can be accessed from the house or garden.



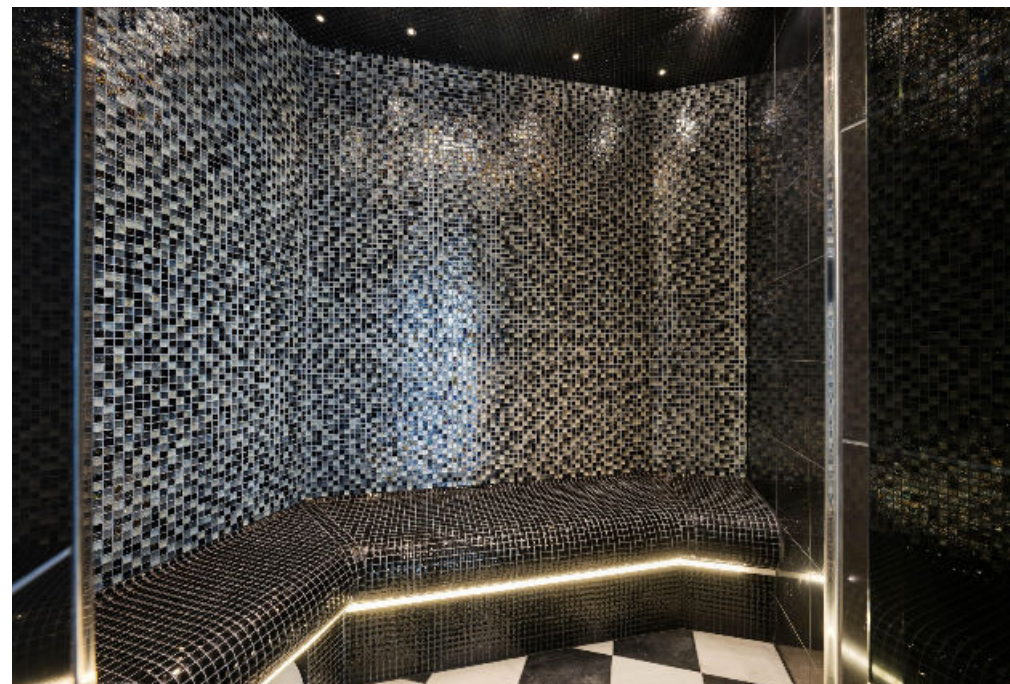


Location

Chelsea Park Gardens is located north of the King's Road and south of the Fulham Road, in a popular area of Chelsea which is convenient for a wide range of amenities and recreational facilities in prime central London.

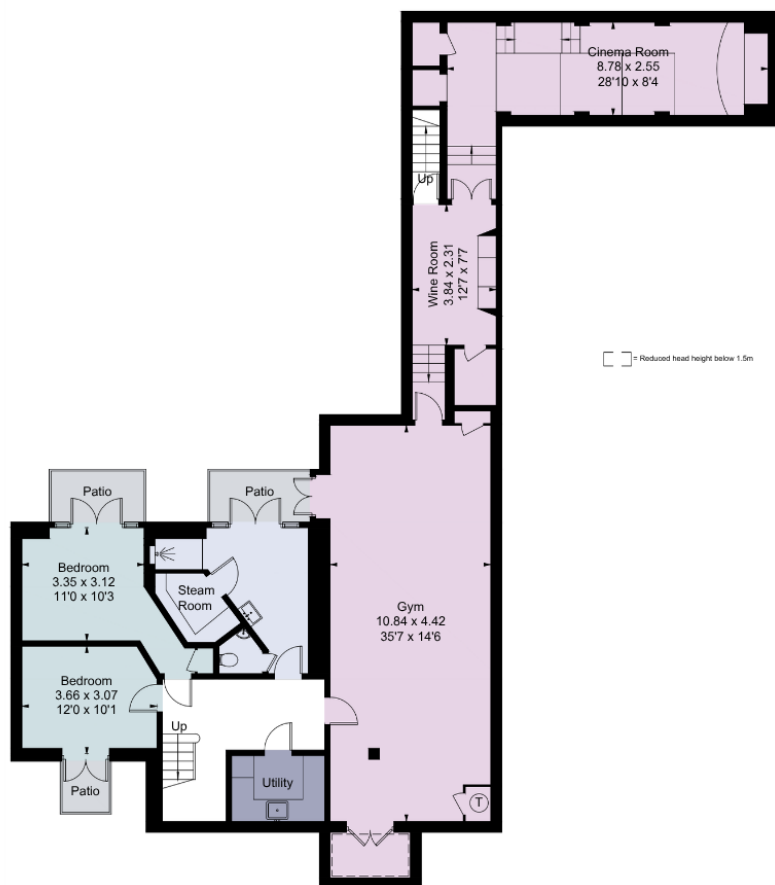
There are excellent transport links with Gloucester Road and South Kensington tube stations 0.8 miles away.

*All distances are approximate.

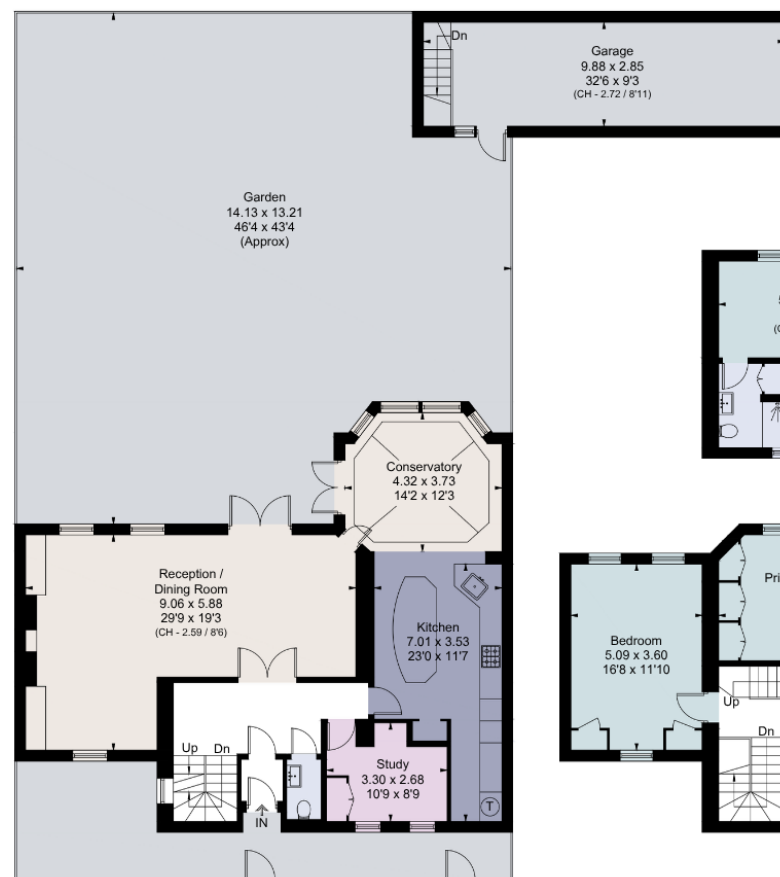




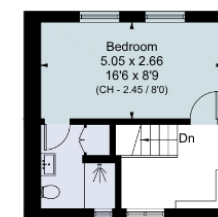




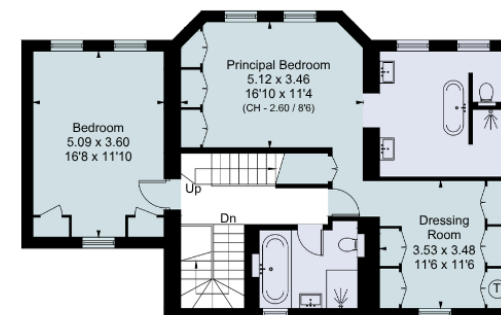
Lower Ground Floor



Ground Floor



Second Floor



First Floor

Chelsea Park Gardens, SW3

Approximate Gross Internal Area = 380.7 sq m / 4,098 sq ft

Approximate Gross Internal Area (including garage) = 409 sq m / 4,403 sq ft

This plan is for layout guidance only. Not drawn to scale unless stated. Windows and door openings are approximate. Whilst every care is taken in the preparation of this plan, please check all dimensions, shapes and compass bearings before making any decisions reliant upon them. (ID767266)

We would be delighted
to tell you more.

Anna Narizzano

020 3826 0639

anna.narizzano@knightfrank.com

Knight Frank Chelsea and South Kensington

352a Kings Road

SW3 5UU

[knightfrank.co.uk](https://www.knightfrank.co.uk)

Your partners in property

1. Particulars: These particulars are not an offer or contract, nor part of one. You should not rely on statements given by Knight Frank in the particulars, by word of mouth or in writing ("information") as being factually accurate about the property, its condition or its value. Neither Knight Frank nor any joint agent has any authority to make any representations about the property, and accordingly any information given is entirely without responsibility on the part of Knight Frank. 2. Material Information: Please note that the material information is provided to Knight Frank by third parties and is provided here as a guide only. While Knight Frank has taken steps to verify this information, we advise you to confirm the details of any such material information prior to any offer being submitted. If we are informed of changes to this information by the seller or another third party, we will use reasonable endeavours to update this as soon as practical. 3. Photos, Videos etc: The photographs, property videos and virtual viewings etc. show only certain parts of the property as they appeared at the time they were taken. Areas, measurements and distances given are approximate only. 4. Regulations etc: Any reference to alterations to, or use of, any part of the property does not mean that any necessary planning, building regulations or other consent has been obtained. A buyer must find out by inspection or in other ways that these matters have been properly dealt with and that all information is correct. 5. Fixtures and fittings: A list of the fitted carpets, curtains, light fittings and other items fixed to the property which are included in the sale (or may be available by separate negotiation) will be provided by the Seller's Solicitors. 6. VAT: The VAT position relating to the property may change without notice. 7. To find out how we process Personal Data, please refer to our Group Privacy Statement and other notices at <https://www.knightfrank.com/legals/privacy-statement>.

Particulars dated May 2024. Photographs and videos dated May 2024. All information is correct at the time of going to print. Knight Frank is the trading name of Knight Frank LLP. Knight Frank LLP is a limited liability partnership registered in England and Wales with registered number OC305934. Our registered office is at 55 Baker Street, London W1U 8AN. We use the term 'partner' to refer to a member of Knight Frank LLP, or an employee or consultant. A list of members names of Knight Frank LLP may be inspected at our registered office. If you do not want us to contact you further about our services then please contact us by either calling 020 3544 0692, email to marketing.help@knightfrank.com or post to our UK Residential Marketing Manager at our registered office (above) providing your name and address.