



Ballater Road, SW2

£3,500 Per calendar month

A recently refurbished three double bedroom property with a garden. Split over two levels with many charming features, including a feature fireplace. This property is a rare find for professional sharers.

Nestled between Clapham High Street and Brixton Town Centre, Ballater Road is always popular with young professionals looking for the perfect mix of transport links and things to do!

Features

- Three Double Bedrooms
- Private Garden
- Split-Level
- Reception Room
- Great Location
- Eat-In Kitchen



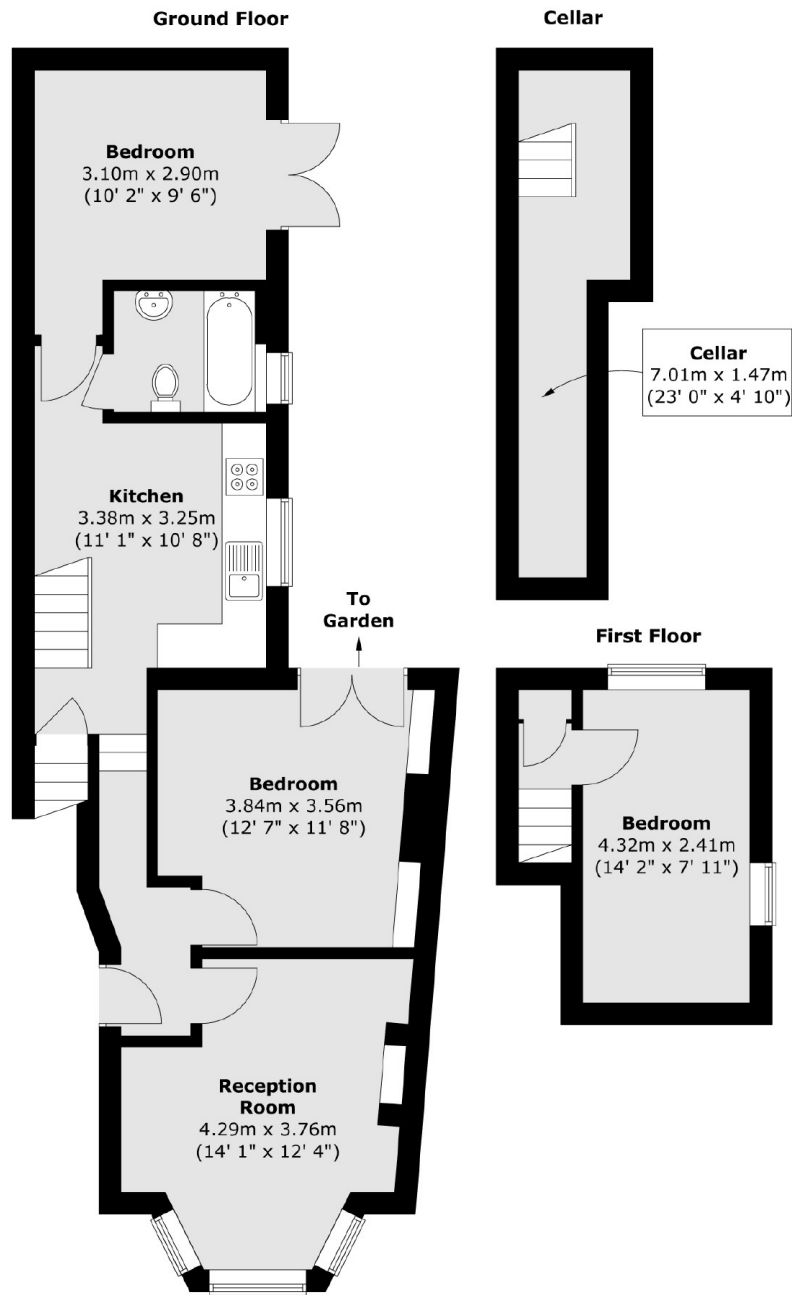
Ballater Road, SW2

Arranged over two floors, this stylishly renovated property comes with a reception room, wooden flooring, a large bay window and plantation shutters. The kitchen offers modern wooden worktops and integrated appliances. There is a family bathroom and two double bedrooms on the ground floor, both with French doors that lead out to a patio garden.

The first floor comes with a further double bedroom and the property also has a cellar, ideal for extra storage space.



Ballater Road, London, SW2



Total area (approx.) : 81.4 sq. m (876 sq. ft)