



**19 Tor Rise**  
, Matlock, DE4 3DL  
£260,000



## 19 Tor Rise

, Matlock, DE4 3DL

Enjoying views towards Riber Castle, is this 2 bedroom detached bungalow featuring 656 sqft of versatile and accessible living accommodation. The property offers opportunity to cosmetically update internally and benefits from well presented gardens, off street parking and single garage.

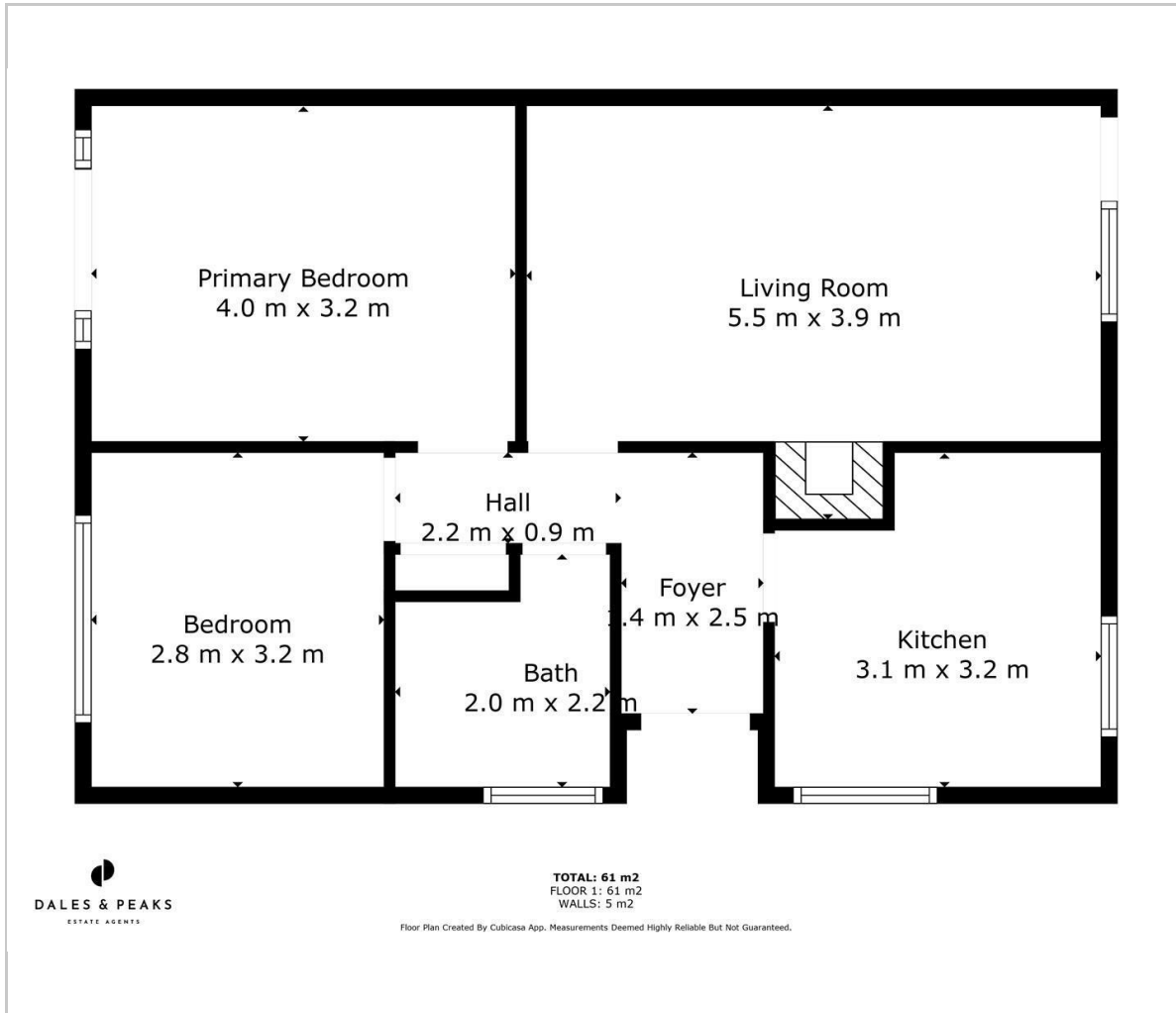
The property features; Entrance hallway, front aspect living room, dining kitchen with ample storage space. Bathroom and two double bedrooms boasting countryside views towards Riber Castle.

**Dales and Peaks ForwardMove**  
- Please read





## Floor Plan



## Viewing

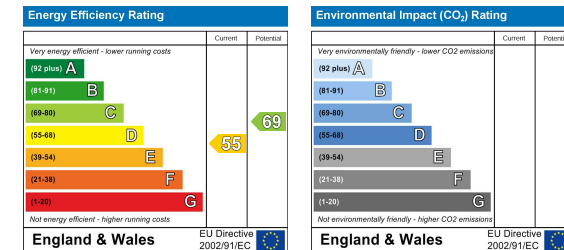
Please contact our Chesterfield Office on 01246 567540 if you wish to arrange a viewing appointment for this property or require further information.

These particulars, whilst believed to be accurate are set out as a general outline only for guidance and do not constitute any part of an offer or contract. Intending purchasers should not rely on them as statements of representation of fact, but must satisfy themselves by inspection or otherwise as to their accuracy. No person in this firm's employment has the authority to make or give any representation or warranty in respect of the property.

## Area Map



## Energy Efficiency Graph



131 Chatsworth Road, Chesterfield, Derbyshire, S40 2AP  
T: 01246 567540



E: info@dalesandpeaks.co.uk  
www.dalesandpeaks.co.uk