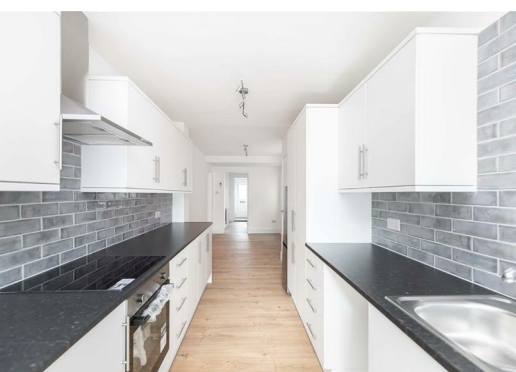




STRATTON OAK ESTATES

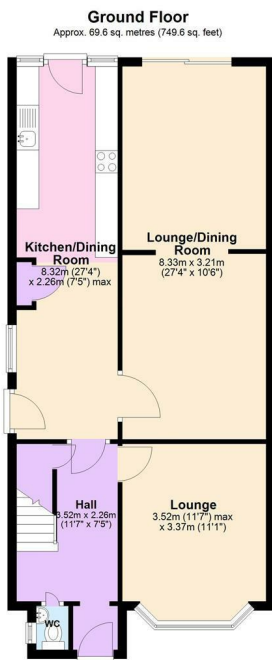


3 2 2  D

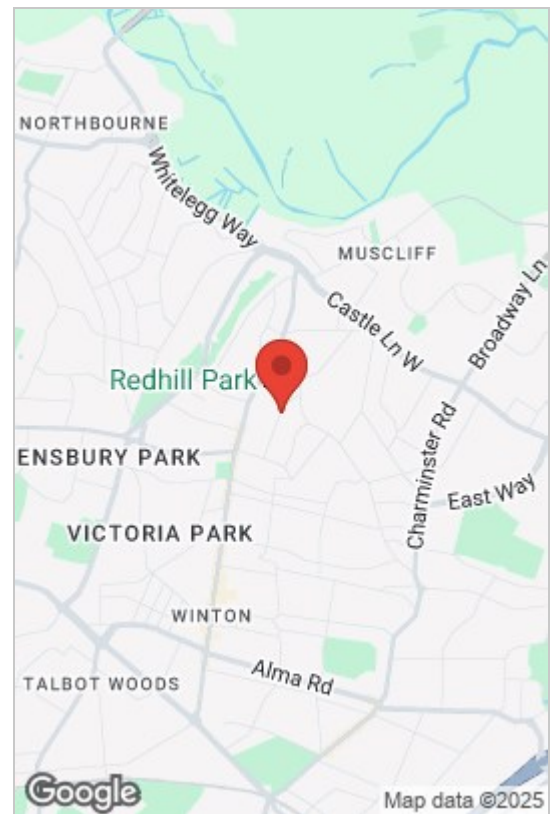
23 Mayfield Road, Bournemouth, BH9 1TQ

Guide Price £415,000

GREEN PARK GARDENS EXETER PARK ROAD, DORSET, BOURNEMOUTH, BH2 5BD
INFO@STRATTONOAKESTATES.COM | T. 01202 237580 | WWW.STRATTONOAKESTATES.COM

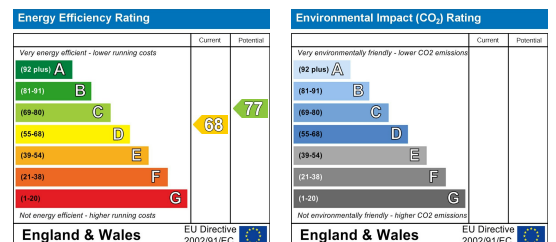


Total area: approx. 112.1 sq. metres (1206.7 sq. feet)



- No forward chain – ready for a smooth, hassle-free purchase
- Three reception rooms offering flexibility – potential for a 4th bedroom or home office
- Modernised throughout with fresh neutral décor and smooth plastered ceilings
- Off-road parking for two vehicles
- Extended 3-bedroom detached family home in sought-after Moordown location
- Spacious front lounge and master bedroom with large bay windows for added light and character
- New boiler installed for efficient heating and peace of mind
- East/south-facing rear garden – perfect for enjoying the sun throughout the day

NO FORWARD CHAIN – A beautifully refurbished and extended 3-bedroom detached home in sought-after Moordown, close to schools, shops, and bus routes. Features include 3 reception rooms (potential 4th bedroom), bay windows to lounge and master, a new kitchen and boiler, off-road parking, and a sunny east/south-facing garden.



Whilst these details are thought to be correct, their accuracy cannot be guaranteed and do not form part of any contract. It should be noted that we have not tested any fixtures, fittings, equipment, apparatus or services, therefore we cannot verify that they are in working order or fit for purpose. Solicitors should be used to confirm that any moveable items described within these details are in fact part of the sale agreement. While we try to ensure measurements are correct they are not guaranteed and purchasers are advised to take their own measurements before ordering any fixtures or fittings.