



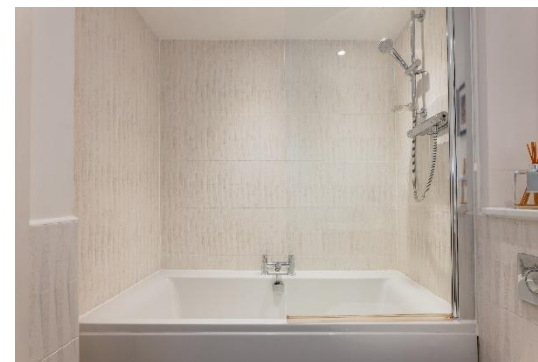
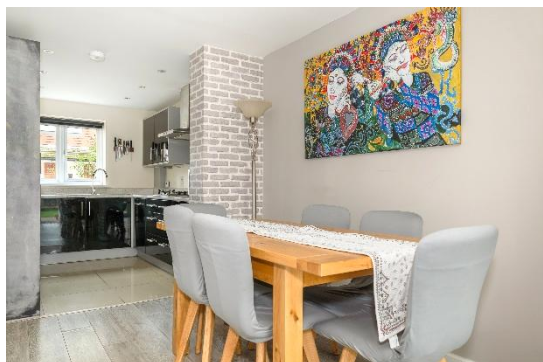
IMMACULATE 3 BED 2 BATHROOM HOUSE

3 Apsley Road, Horley, RH6 9RX
Guide price £438,000

A well-presented three-bedroom house offering versatile open-plan living accommodation, ideal for modern family life. The property features a fully fitted kitchen, two bathrooms and a convenient ground-floor cloakroom. Outside, the south-east facing garden provides an excellent space for relaxing or entertaining, while a single garage offers secure parking or additional storage. A fantastic opportunity to acquire a stylish and practical home in a sought-after setting. Council tax band: D. EPC awaited.

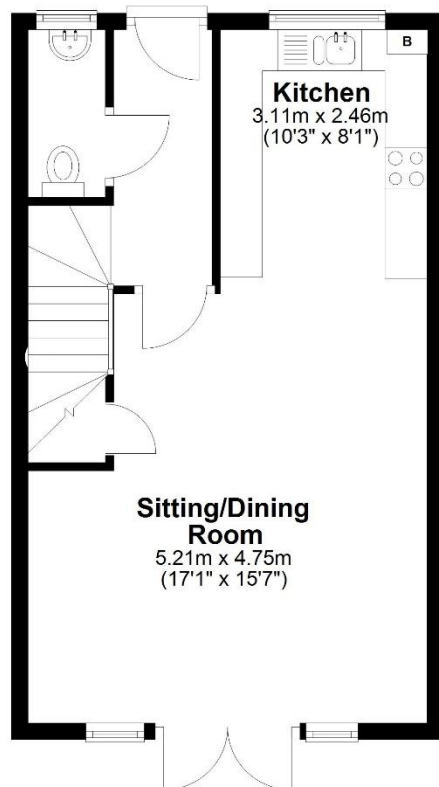


lewis
white



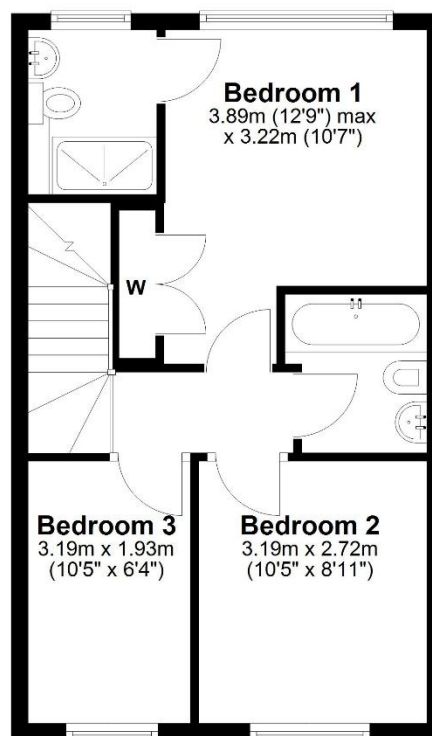
Ground Floor

Approx. 40.0 sq. metres (430.8 sq. feet)



First Floor

Approx. 46.4 sq. metres (499.6 sq. feet)



Total area: approx. 86.4 sq. metres (930.3 sq. feet)