

F&P  
AGENCY

White House

Flackwell Heath, Buckinghamshire



Giles Davidson & Andrew Riley of F&P Agency present a truly exceptional opportunity to acquire a magnificent four-bedroom period property that seamlessly blends historical charm with contemporary luxury, nestled in a highly sought-after location. This stunning house, underwent a comprehensive renovation and refurbishment approximately five years ago, ensuring a modern and sophisticated living experience throughout. Now offered to the market with No Onward Chain.

# Details



## PROPERTY PROFILE

- Period property with contemporary finish, renovated and refurbished throughout 5 years ago
- Stunning views over countryside to rear, and the Thames Valley towards Winter Hill
- Spacious living room with French doors to garden and focal point fireplace
- Modern kitchen/breakfast room, with access to cellar, and separate dining room
- Four bedrooms, all with built in wardrobes
- Ensuite shower room to the main and family bathroom
- Covered rear terrace and lawned garden backing onto fields
- Gated driveway providing additional privacy
- Convenient location, a half mile level walk to the centre of Flackwell Heath village centre
- Selection of well regarded schooling at primary, secondary and grammar levels

# Location

---

## THE NEIGHBOURHOOD

---

Location is key, and White House excels in this regard. It is conveniently situated just a half-mile level walk from the vibrant centre of Flackwell Heath village. Here, residents can enjoy a selection of local amenities, including shops, cafes, and restaurants. The area is also renowned for its excellent schooling options, with a selection of well-regarded primary, secondary, and grammar schools, making it an ideal choice for families. This exceptional property truly offers a blend of elegant living, stunning natural beauty, and unparalleled convenience.

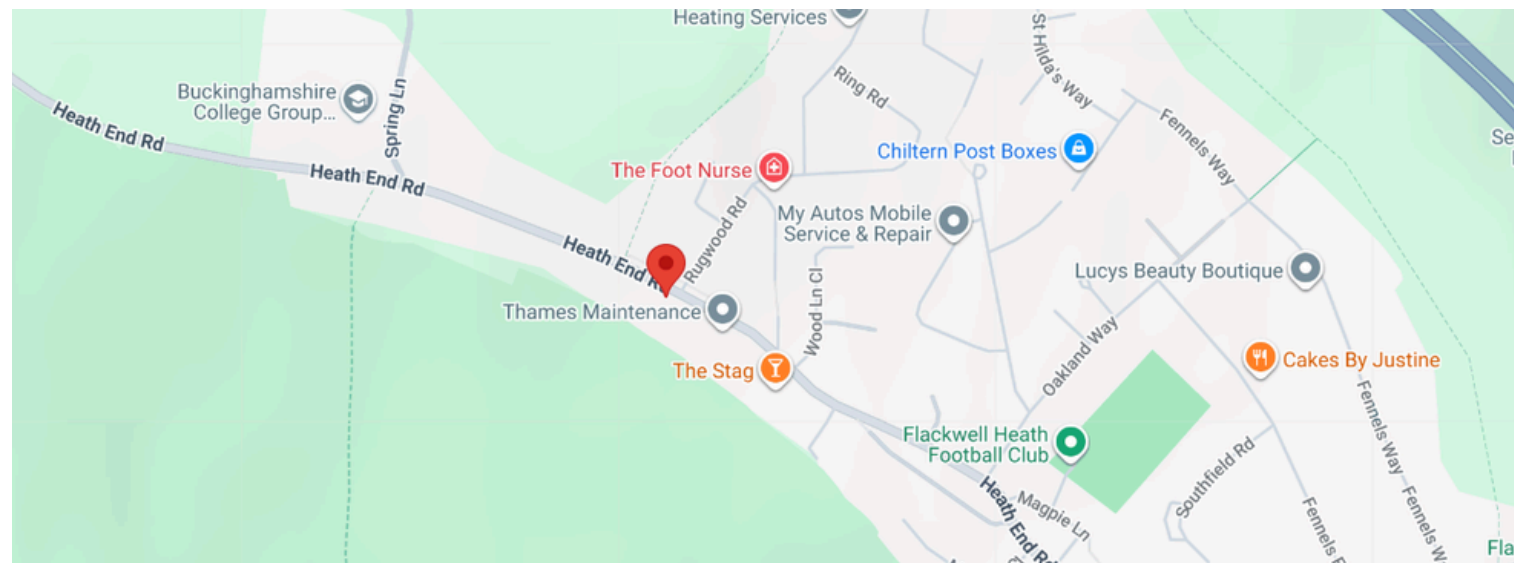
**Local Authority** Buckinghamshire Council.

**Features and Services:** Mains gas, electricity and water.

**Viewing Arrangements:** Prior to making an appointment to view, we strongly recommend that you discuss any particular points which are likely to affect your interest in the property with Giles or Andrew who have seen the property in order that you do not make a wasted journey.

**Tenure & Possession:** The property is Freehold and offers vacant possession upon completion.

White House,  
113 Heath End Road,  
Flackwell Heath,  
High Wycombe,  
Buckinghamshire,  
HP10 9ES





Upon entering White House, you are immediately struck by the meticulous attention to detail and the high-quality finish evident in every room. The property boasts two generous reception rooms, providing ample space for both formal entertaining and relaxed family living. The spacious living room is a particular highlight, featuring elegant French doors that open directly onto the terrace and garden, creating a seamless indoor-outdoor flow. A focal point fireplace adds warmth and character to this inviting space, perfect for cosy evenings.

WHITE HOUSE, FLACKWELL HEATH





The heart of White House is undoubtedly the modern kitchen/breakfast room, which is both stylish and highly functional. Equipped with contemporary fittings and ample storage, it provides a delightful space for culinary pursuits. A convenient access point to the cellar is also available from the kitchen, offering additional storage solutions. Adjacent to the kitchen, a separate dining room provides an ideal setting for family meals and dinner parties. There is an additional cloakroom off the entrance hall.





WHITE HOUSE, FLACKWELL HEATH



Ascending to the first floor, you will find four well-proportioned bedrooms, each thoughtfully designed with built-in wardrobes and cupboards, maximising space and providing practical storage. The main bedroom benefits from a private ensuite shower room, offering a luxurious retreat. A well-appointed family bathroom serves the remaining bedrooms, ensuring comfort and convenience for all residents. There is an additional walk in storage cupboard off the landing.



WHITE HOUSE, FLACKWELL HEATH

**WHITE HOUSE, FLACKWELL HEATH**





The exterior of White House is equally impressive. A covered rear terrace provides an ideal spot for al fresco dining and entertaining, regardless of the weather. Beyond this, a beautifully maintained lawned garden extends, backing directly onto open fields, offering a sense of peace and privacy. The property also benefits from a gated driveway, providing secure off-road parking and enhancing the overall sense of exclusivity.

WHITE HOUSE, FLACKWELL HEATH





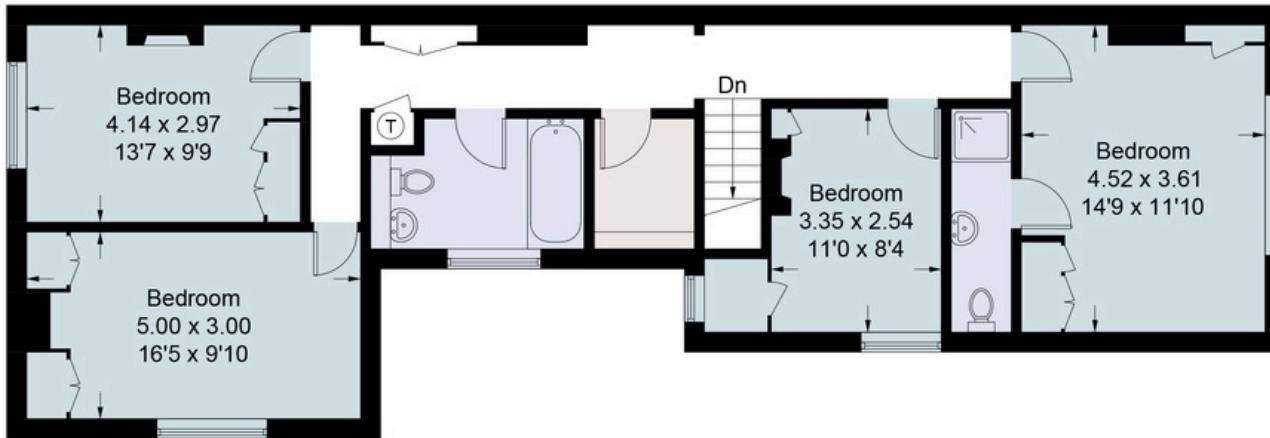
WHITE HOUSE, FLACKWELL HEATH



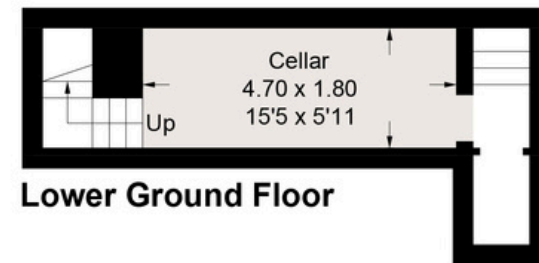
One of the most captivating features of White House is its breath-taking outlook. From the rear, residents can enjoy stunning, uninterrupted views over the picturesque countryside and the Thames Valley, stretching towards the iconic Winter Hill. Imagine waking up to such a serene vista every day.

# White House, 113 Heath End Road

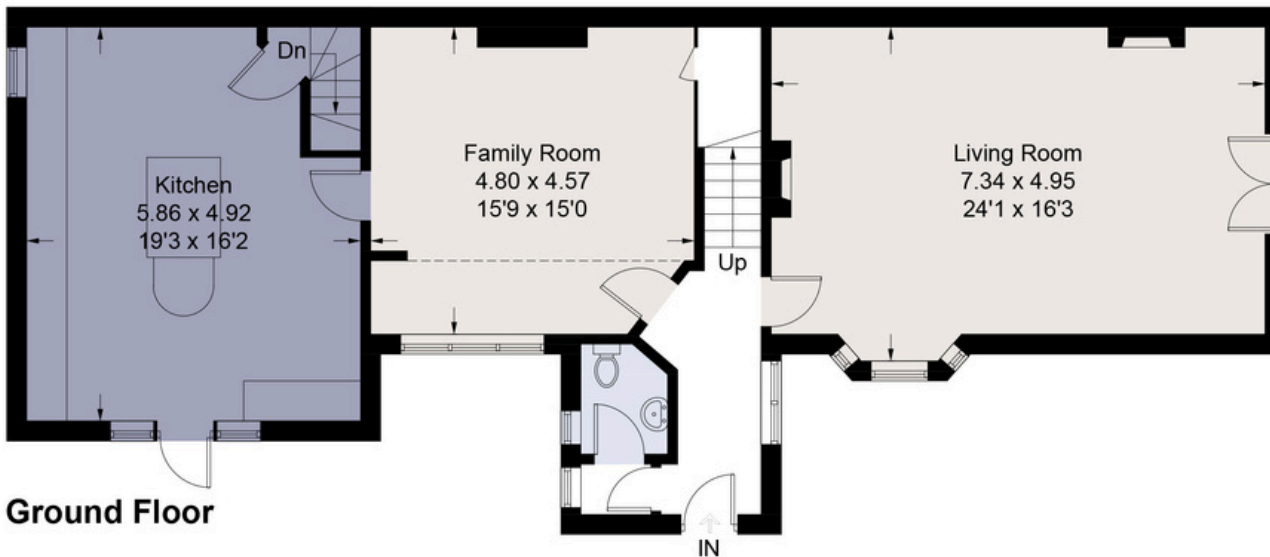
Approximate Gross Internal Area = 219.52 sq m / 2363 sq ft



First Floor



Lower Ground Floor



Ground Floor

This plan is for layout guidance only. Not drawn to scale unless stated. Windows and door openings are approximate. Whilst every care is taken in the preparation of this plan, please check all dimensions, shapes and compass bearings before making any decisions reliant upon them.

© CJ Property Marketing Ltd Produced for F&P Agency



# Your Managing Partners

F&P Agency is transforming the way property is sold.

We're committed to providing exceptional service from start to sale, to make your home buying or selling experience as smooth and successful as possible.

# Team



**Giles Davidson**  
Managing Partner, Marlow &  
Bourne End Region



**Andrew Riley**  
Managing Partner, Gerrards  
Cross & Thame Region

---

## F & P AGENCY

---

Giles Davidson

☎ 01628 956528

🖱 [www.fandpagency.com](http://www.fandpagency.com)

✉ giles@fandpagency.com

Andrew Riley

☎ 01844 397777

🖱 [www.fandpagency.com](http://www.fandpagency.com)

✉ andrew@fandpagency.com



SCAN TO BOOK A VIEWING

# Contact Us Today

F&P  
AGENCY