



# Longmeadow

Wootton, Northampton

oriordanbond  
SALES & LETTINGS





# Longmeadow

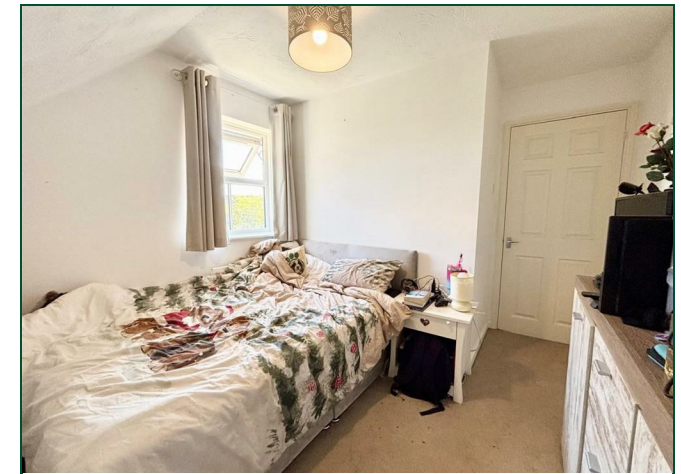
Wootton  
NN4 6AN

Offers Over  
£400,000

**Offered for sale at the end of a cul-de-sac is this family home built by Bryant Homes to their Victoria design.**

Situated on a corner plot the accommodation comprises entrance hall, sitting room, kitchen/dining room, WC and utility room on the ground floor. On the first floor there are four well proportioned bedrooms, an en-suite bathroom and family bathroom. Externally there are front and rear gardens, off road parking and a single garage. The property also benefits from gas central heating, uPVC double glazing and a south facing rear garden. (B/1169/M)

- Well presented four bedroom detached home
- En-suite to master bedroom
- Re-fitted kitchen/diner
- Gas radiator heating
- Enclosed corner plot rear garden
- Ample off road parking and garage











### Additional information

- Council Tax Band: E
- Energy Efficiency Rating: D

### Viewing

Viewing strictly by appointment – details below

### Disclaimer

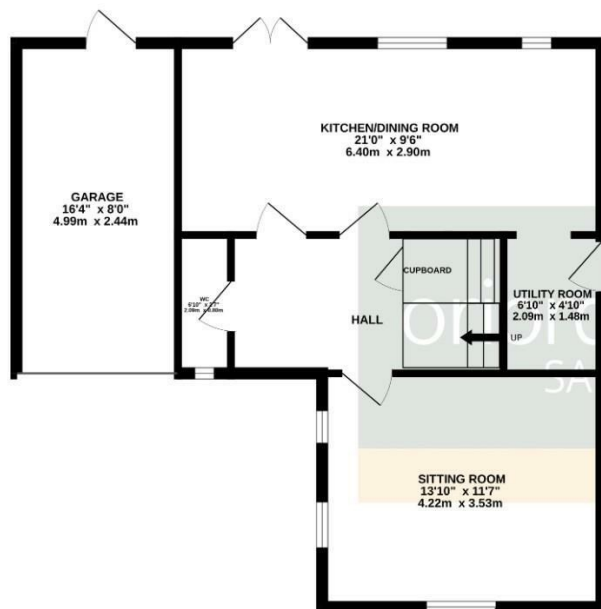
O'Riordan Bond Estate Agents Limited has not tested apparatus, equipment, fittings or services and so cannot verify they are in working order. The buyer is advised to obtain verification from their solicitor or surveyor.

**O'Riordan Bond Grange Park Sales**  
01604 432007

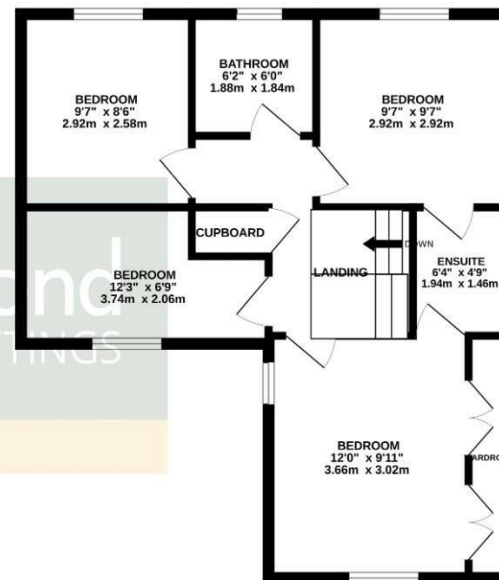
grangepark@oriordanbond.co.uk



GROUND FLOOR  
635 sq.ft. (59.0 sq.m.) approx.



1ST FLOOR  
534 sq.ft. (49.6 sq.m.) approx.



TOTAL FLOOR AREA : 1169 sq.ft. (108.6 sq.m.) approx.

Whilst every attempt has been made to ensure the accuracy of the floorplan contained here, measurements of doors, windows, rooms and any other items are approximate and no responsibility is taken for any error, omission or mis-statement. This plan is for illustrative purposes only and should be used as such by any prospective purchaser. The services, systems and appliances shown have not been tested and no guarantee as to their operability or efficiency can be given.  
Made with Metropix ©2025