



Sloane Gardens, SW1W

£900 Per week

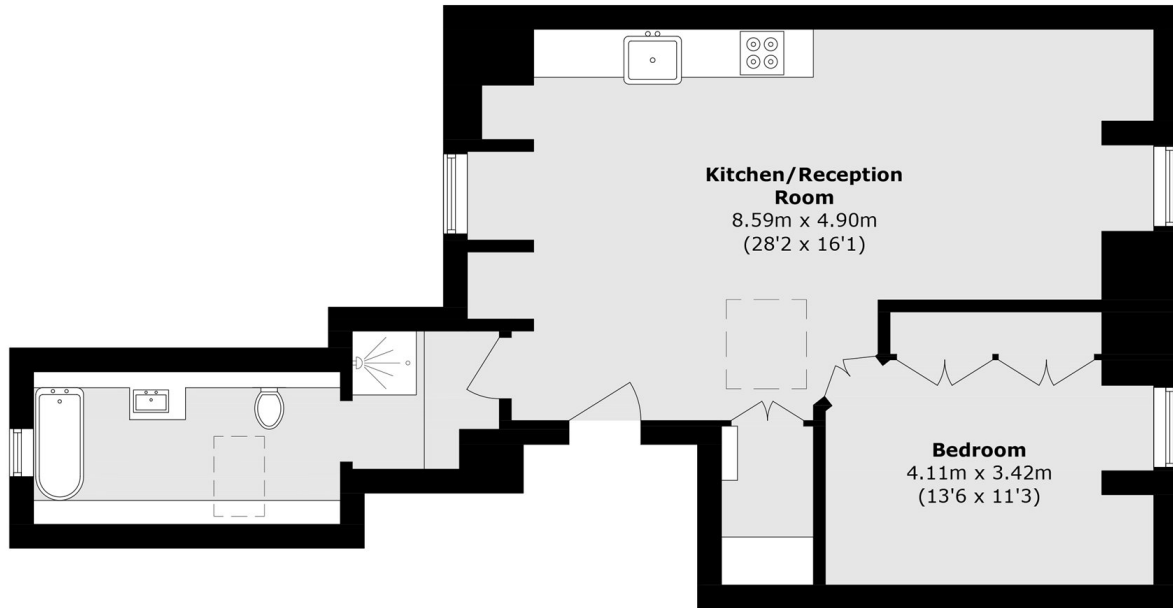
A stunning one bedroom apartment in one of Chelsea's most prestigious neighbourhoods. This property is the epitome of characterful and radiates a unique charm.

Sloane Gardens is ideally located for the shops and restaurants of Kings Road, Sloane Street and Duke of York Square. The property is just moments away from Sloane Square Underground Station.

Features

- One Double Bedroom
- One Bathroom
- Separate Kitchen
- Traditional
- Close to Sloane Square

Sloane Gardens, London, SW1W



Fourth Floor

Total area (approx.): 63.4 sq. m (682.4 sq. ft)