



1 Bed

Flat

located in 11 Silvercroft Street

AiHOMES.

TS402960, 11 Silvercroft Street, Manchester



£1,700 Per Calendar Month

Welcome to this charming one-bedroom flat located at 11 Silvercroft Street in the vibrant city of Manchester. Spanning an impressive 571 square feet, this property offers a perfect blend of comfort and modern living.

As you enter the flat, you will be greeted by a spacious and inviting living area, ideal for relaxation or entertaining guests. The well-designed layout maximises the use of space, ensuring that every corner of the flat feels both functional and welcoming. The bedroom is a tranquil retreat, providing a peaceful space to unwind after a busy day.

The kitchen is equipped with modern appliances, making it a delightful space for cooking enthusiasts. Whether you are preparing a quick meal or hosting a dinner party, this kitchen is sure to meet your needs.

Situated in a desirable location, this flat offers easy access to local amenities, including shops, cafes, and public transport links, making it an excellent choice for those who appreciate convenience and accessibility.

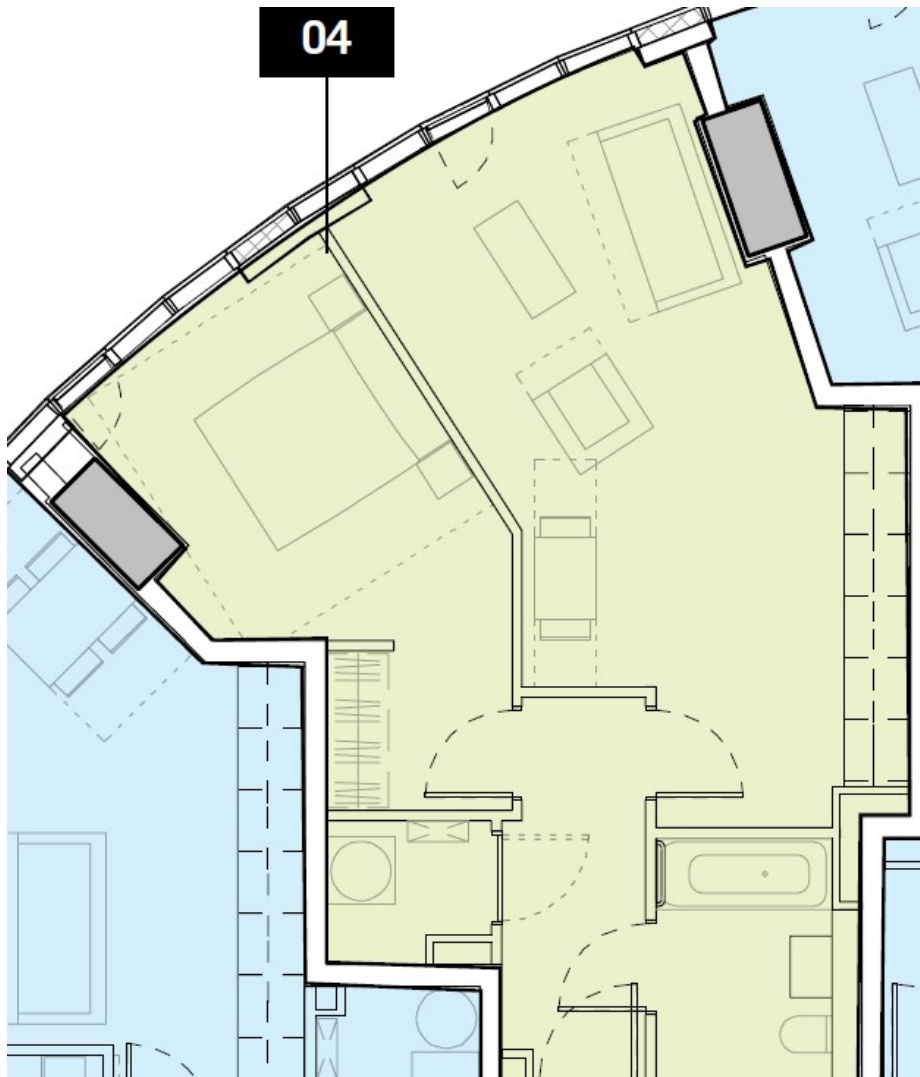
This property is perfect for first-time buyers, young professionals, or anyone looking to enjoy the vibrant lifestyle that Manchester has to offer. With its appealing features and prime location, this flat is a wonderful opportunity not to be missed.


We invite you to come and experience the charm of this lovely flat for yourself.





TS402960, 11 Silvercroft Street, Manchester



Energy Efficiency Rating		
	Current	Potential
<i>Very energy efficient - lower running costs</i>		
(92 plus) A		
(81-91) B	85	85
(69-80) C		
(55-68) D		
(39-54) E		
(21-38) F		
(1-20) G		
<i>Not energy efficient - higher running costs</i>		
England & Wales	EU Directive 2002/91/EC 	

EPC Rating: B
Council Tax Band: D

CONTACT

5th floor, Empress Business Center
 380 Chester Road
 Manchester
 M16 9EA

E: info@aihomes.uk

T: 0127 332 8069

