



9B Silver Street
Kettering, NN16 0BN



Simpson & Partners

Simpson and Partners are pleased to welcome this well-presented one bedroom flat to the rental market!

Situated in the town centre, the accommodation comprises generous lounge/diner/kitchen, bathroom with three piece suite and a large bedroom with built in storage.

A contribution of £30PCM will be payable in addition to the rental amount for the water services.

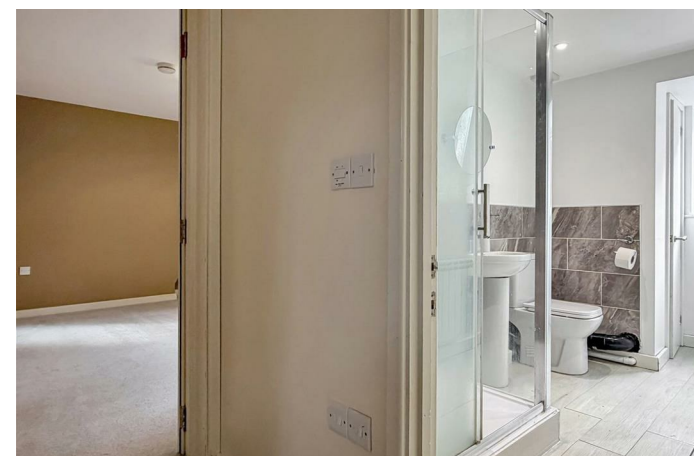
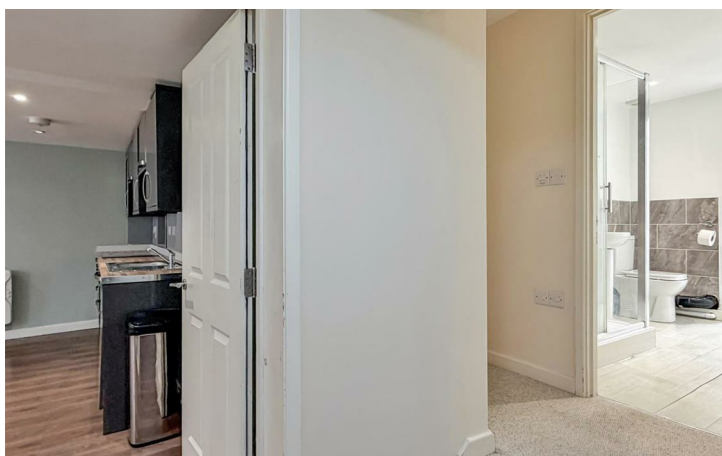
Available IMMEDIATELY

EPC D

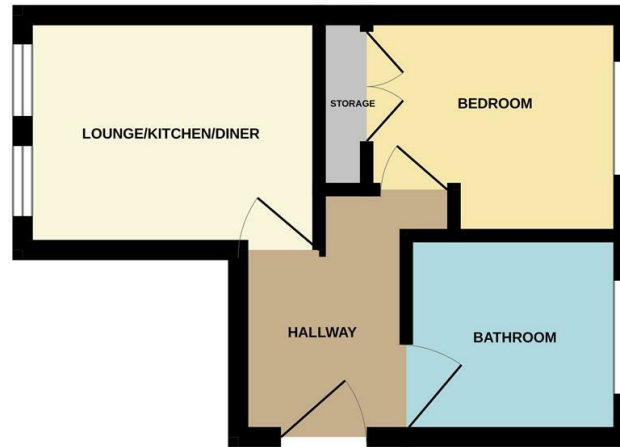
Council Tax A



£695 PCM



GROUND FLOOR



Whilst every attempt has been made to ensure the accuracy of the floor plan contained here, measurements of doors, windows, rooms and any other items are approximate and no responsibility is taken for any error, omission, or mis-statement. The plan is copyright to Simpson and Partners and is for illustrative purposes and should only be used as such for any prospective purchase. The services, systems and appliances shown have not been tested and no guarantee as to their operability can be given.
Made with Metropack ©2006



Energy Efficiency Rating		
	Current	Potential
Very energy efficient - lower running costs		
(92 plus) A		
(81-91) B		
(69-80) C		
(55-68) D		
(39-54) E		
(21-38) F		
(1-20) G		
Not energy efficient - higher running costs		
England & Wales	EU Directive 2002/91/EC	



When you buy with Simpson and Partners, you know **you'll be in safe hands**. From the moment you walk through our doors, we'll make you **feel truly welcome**. Our sales consultants and financial advisors will take you through **every step of the process**, offering **free expert advice** along the way, from help choosing the right mortgage and insurance through to finding your conveyancer. And if you need help selling your home too, **with over 20 years of local experience, you can trust us to get you moving**.



**Simpson
& Partners**

Making Every
Journey Personal



01536 518200

kettering@simpsonandpartners.co.uk

<https://www.simpsonandpartners.co.uk/>

1 Silver Street, Kettering, Northants, NN16 0BN