



Guide Price
£425,000

Leasehold

2x  1x  1x 

**Carshalton Road,
Banstead, Surrey, SM7**

OVER 60?

Secure this property
for up to **59% less!**

cubitt & west
Helping you move forwards



Main features

- Modern two-bedroom mid-terrace house in a semi-rural location
- Less than 10 years old
- Can be purchased as a shared ownership or 100% share
- Ideal for first-time buyers or those looking to downsize
- Allocated parking

Accommodation

GROUND FLOOR

Entrance Hall

Kitchen/Diner: (L-shaped) 14'0 x 13'2 (4.27m x 4.02m) plus 9'6 x 6'4 (2.90m x 1.93m)

Lounge: 12'6 x 10'7 (3.81m x 3.23m)

Cloakroom

FIRST FLOOR

Landing

Bedroom 1: 12'0 up to fitted wardrobes x 9'6 (3.66m x 2.90m)

Bedroom 2: 13'9 x 9'6 (4.19m x 2.90m)

Bathroom

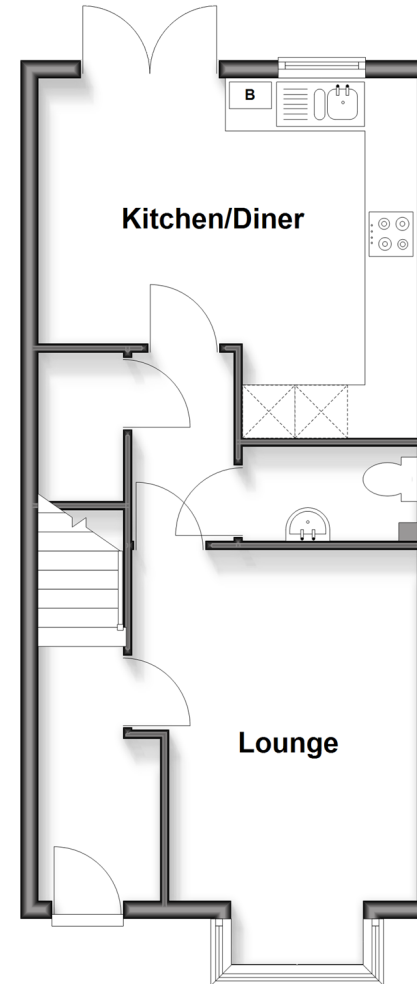
OUTSIDE

Garden

Allocated Parking Bay

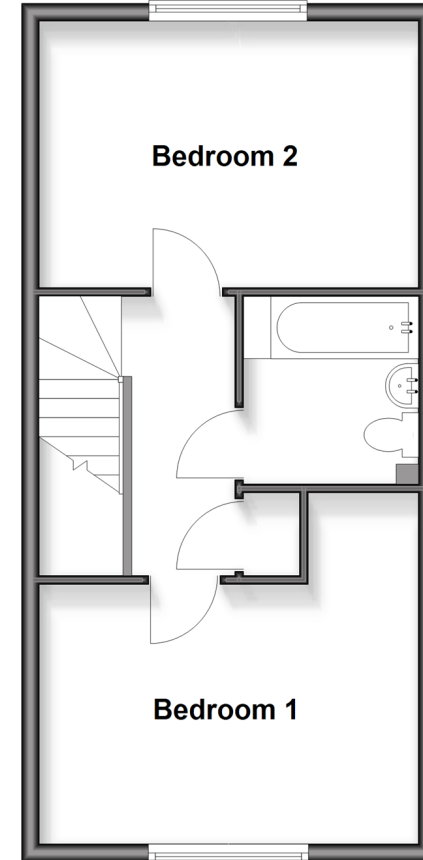
Ground Floor

Approx. 41.1 sq. metres (442.0 sq. feet)



First Floor

Approx. 40.0 sq. metres (430.4 sq. feet)



Call Banstead - 01737 352233 ■ cubittandwest.co.uk

- Legal advice should be taken to verify fixtures/fittings, planning, alterations and/or lease details
- Appliances & services are untested, dimensions are approximate and floor plans are not to scale
- Through a Homewise Home For Life Plan people aged 60+ can secure this property for up to 50% less, by purchasing a Lifetime Lease.



20110278/20251201/LE/LE