





20 Ael-Y-Coed

Barry, Barry

Beautiful three bedroom detached home located in a quiet West End cul-de-sac. Featuring an open plan kitchen/diner, conservatory, spacious lounge, downstairs WC, en-suite to the master bedroom, family bathroom, garage, driveway and landscaped garden. Whitmore High School catchment.

Move-in ready!

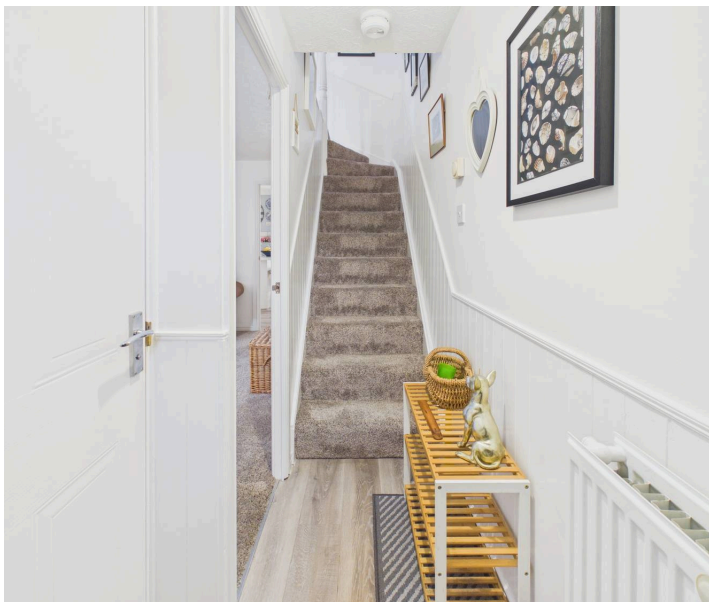
Council Tax band: E

Tenure: Freehold

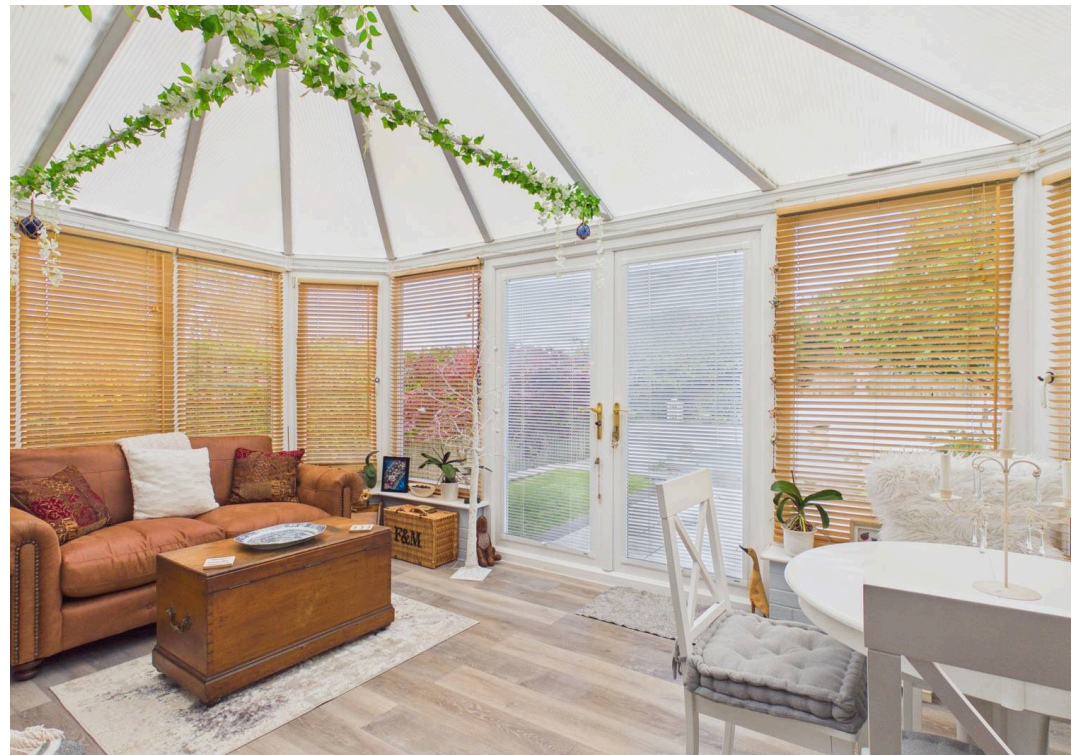
EPC Energy Efficiency Rating:

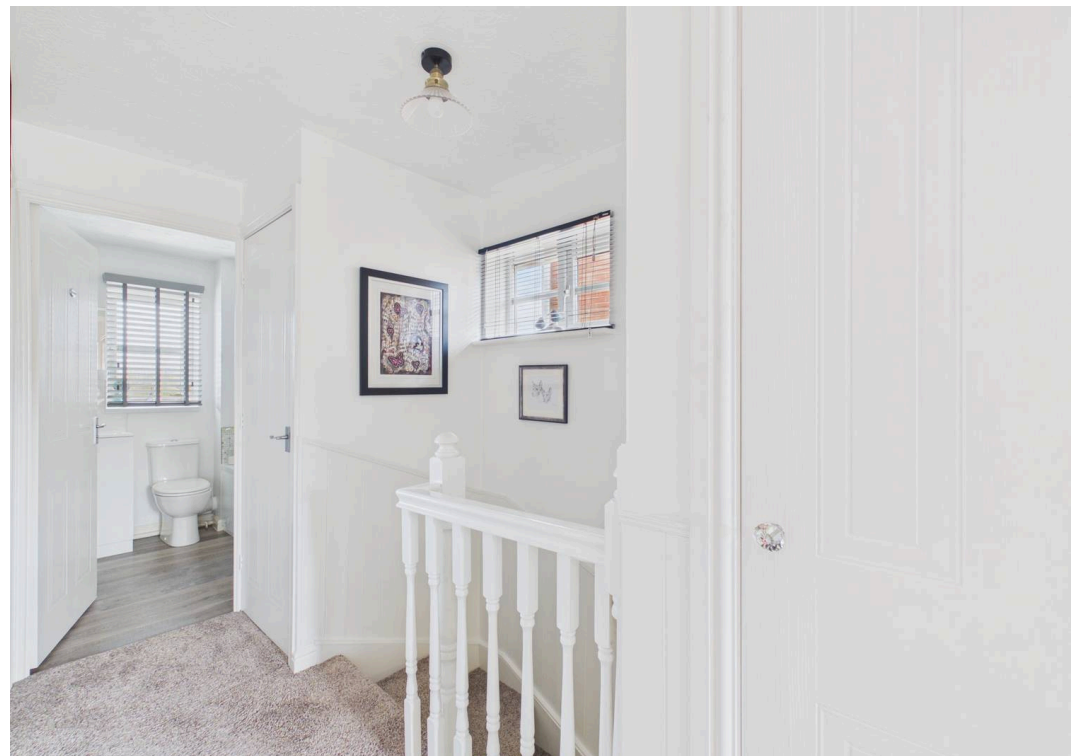
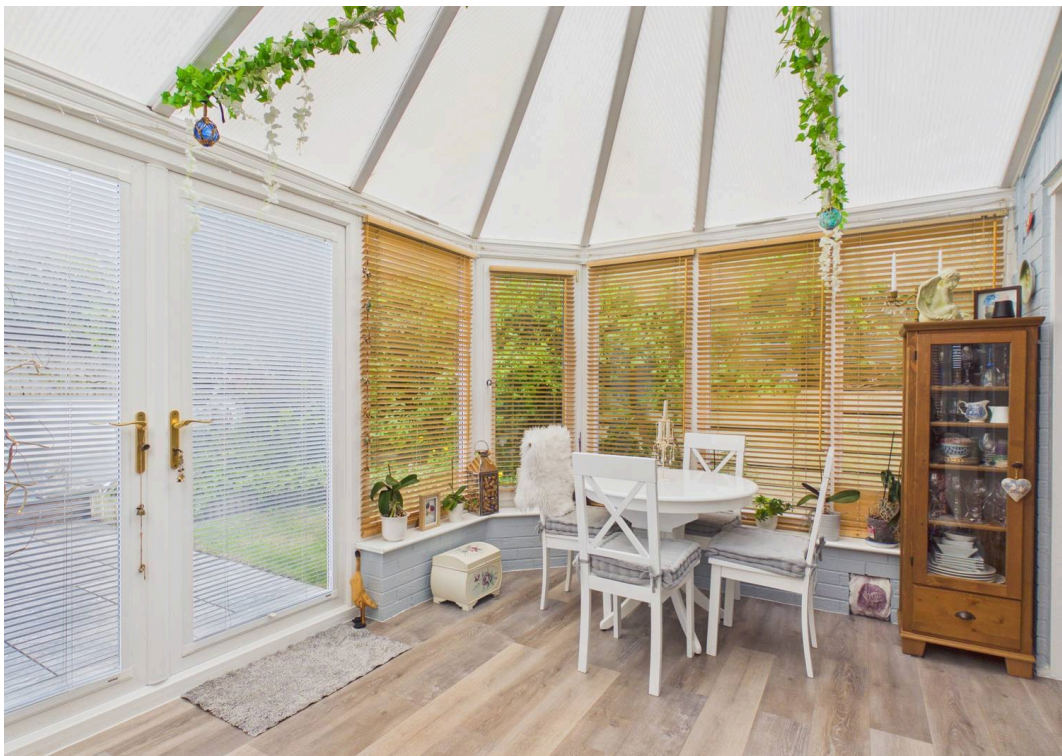
EPC Environmental Impact Rating:

- THREE BEDROOM DETACHED PROPERTY
- LOCATED ON A QUIET CUL-DE-SAC IN THE WEST END OF BARRY
- BEAUTIFULLY PRESENTED THROUGHOUT
- SPACIOUS LOUNGE
- MODERN OPEN PLAN KITCHEN/DINER
- CONSERVATORY
- FIRST FLOOR FAMILY BATHROOM, EN-SUITE TO MASTER PLUS DOWNSTAIRS WC
- LANDSCAPED REAR GARDEN
- GARAGE PLUS LONG DRIVEWAY PROVIDING AMPLE PARKING
- EPC TBC





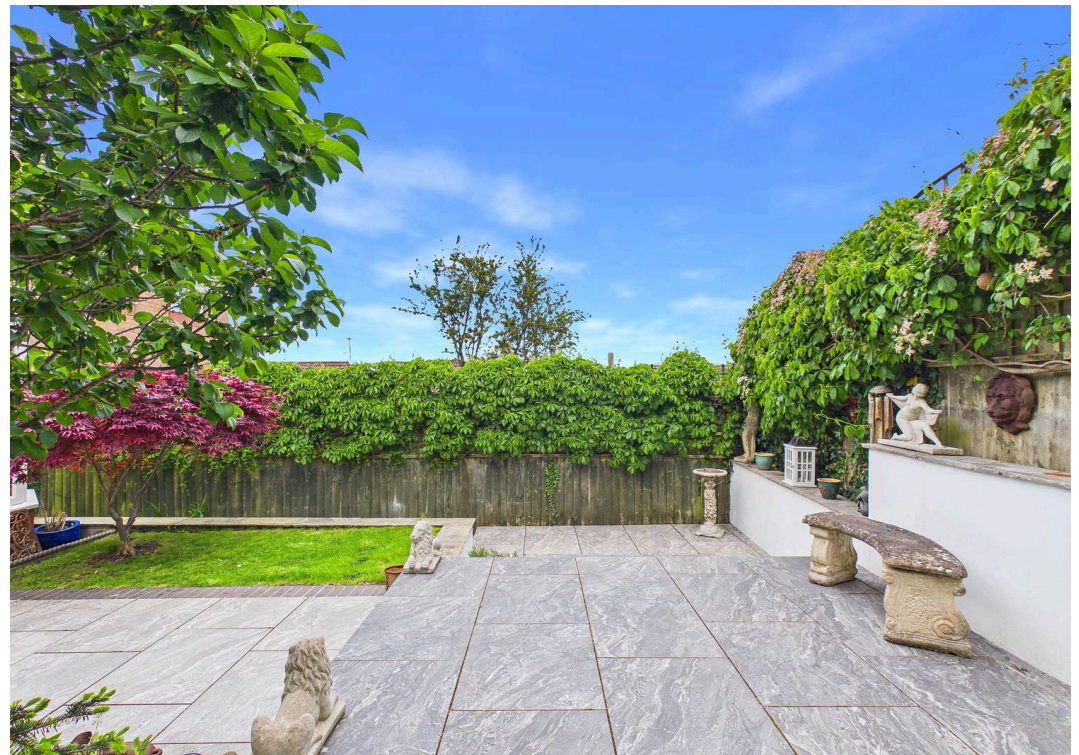


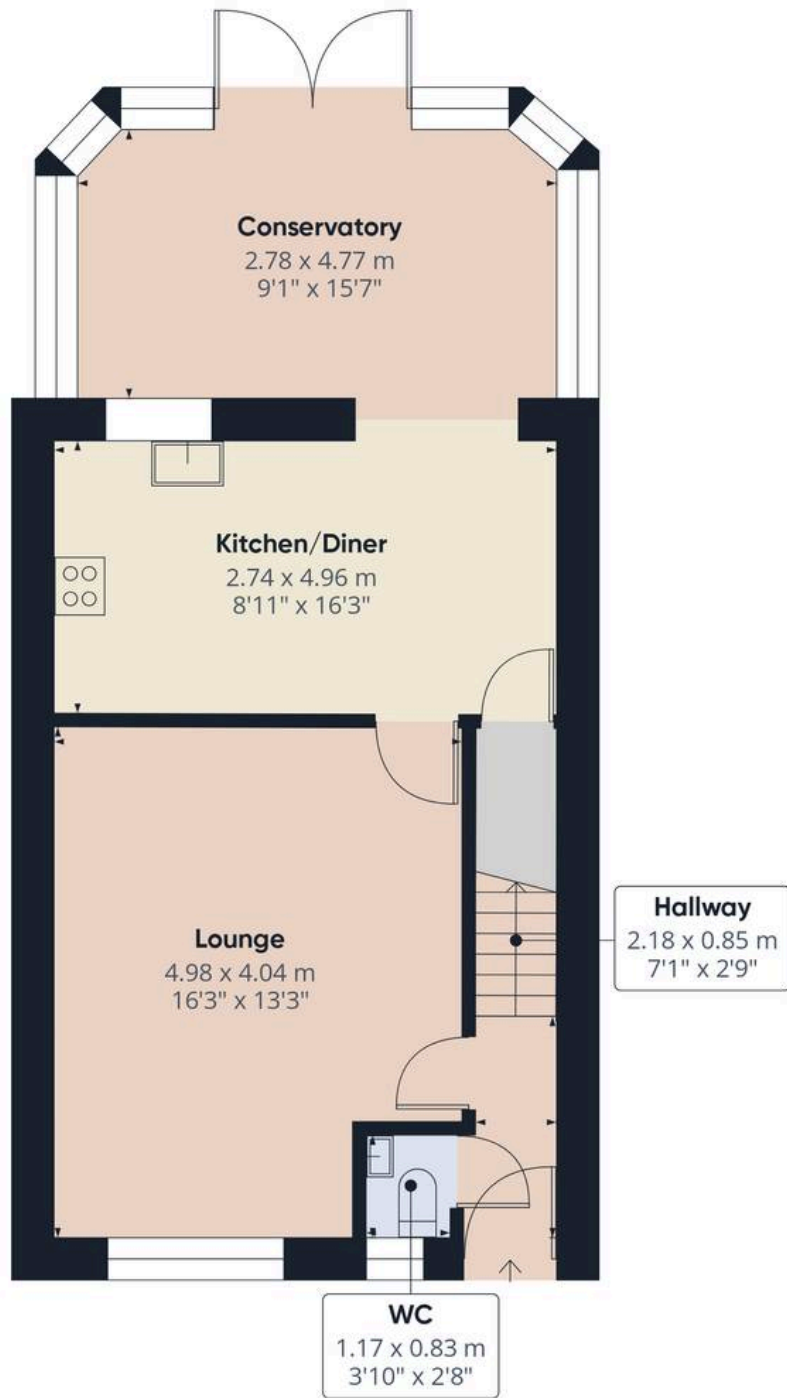












Approximate total area⁽¹⁾

52.7 m²
568 ft²

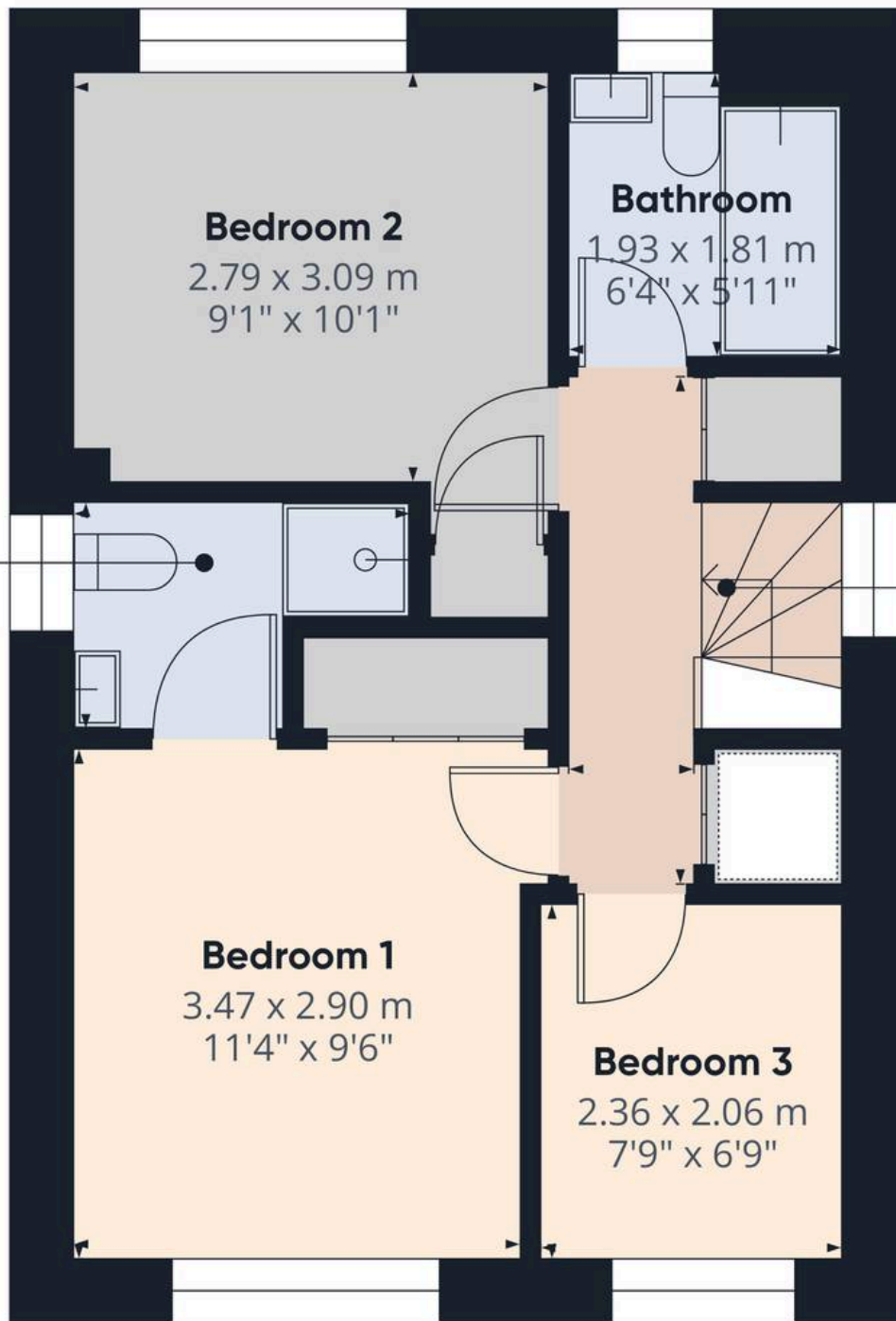
(1) Excluding balconies and terraces

Calculations reference the RICS IPMS 3C standard. Measurements are approximate and not to scale. This floor plan is intended for illustration only.

GIRAFFE360



Ground Floor



Approximate total area⁽¹⁾

34.5 m²
372 ft²

(1) Excluding balconies and terraces

Calculations reference the RICS IPMS 3C standard. Measurements are approximate and not to scale. This floor plan is intended for illustration only.

GIRAFFE360



First Floor



Chris Davies Estate Agents

Chris Davies Estate Agents, 24 High Street - CF62 7EA

01446 700007

barry@chris-davies.co.uk

www.chris-davies.co.uk/

HELPFUL INFORMATION - whilst we try to ensure our sales particulars are complete, accurate and reliable, if there is any point which is particularly important, please ask and we will be happy to check it, including specific information in respect of commuting links, surroundings, noise, views, or condition. For security purposes, applicants who wish to view will need to provide their name, address and telephone number. All measurements are approximate to the widest and longest points. Buyers are advised to instruct a solicitor to obtain verification of tenure and a surveyor to check that appliances, installations and services are in satisfactory condition.