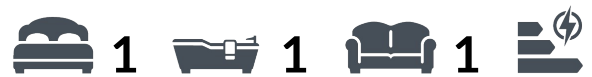


LATCHAM DOWLING

ESTATE AGENTS



Sun Street, Potton, SG19 2LR
£160,000



29A Queensbury Lodge Sun Street, Pottton, SG19 2LR

£160,000



Entrance

Via own entrance double glazed front door to entrance hall.

Entrance hall

Vertically mounted radiator. Wood effect flooring. Storage cupboard.

Lounge

12'0 x 10'9 (3.66m x 3.28m)

Double glazed window to rear aspect. Double glazed door leading to private garden. Wood effect flooring. Opening to kitchen.

Kitchen

7'3 x 6'9 (2.21m x 2.06m)

Range of fitted base and eye level units with contrasting black worktops. Integrated oven with hob over and extractor hood. Plumbing for washing machine. Space for fridge/freezer. Wood effect flooring. Circular stainless steel sink with mixer taps.

Bathroom

7'5 x 6'1 (2.26m x 1.85m)

P Shaped bath with shower over and shower screen. W.c. Washbasin. Tiled flooring. Full height tiling to walls. Extractor fan.

Outside

Private rear garden with small storage passage to side. Enclosed by fencing. Gated access to side.

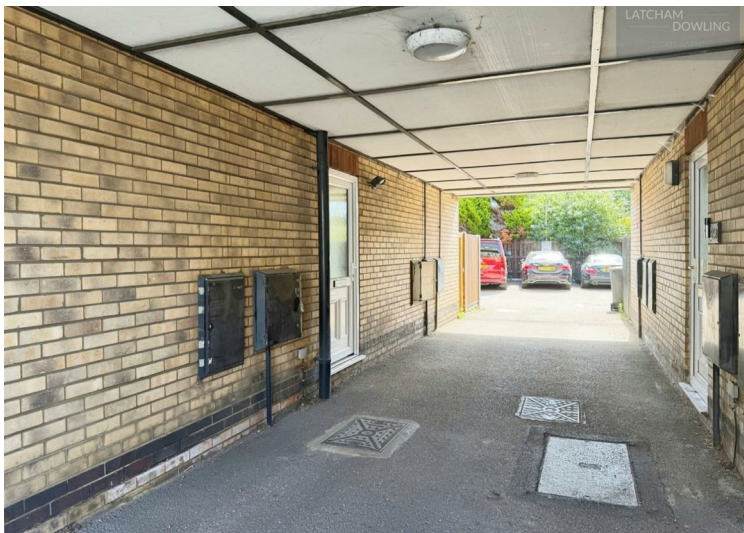
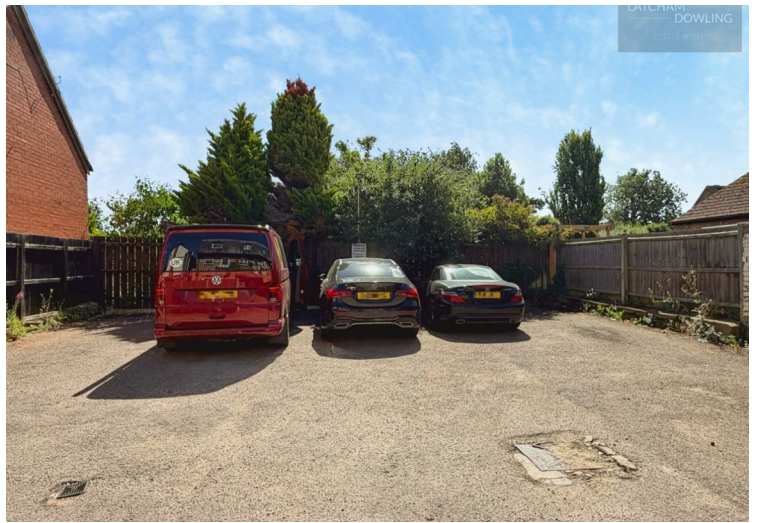
Parking

Private allocated parking space.


Bedroom

9'10 x 9'2 (3.00m x 2.79m)

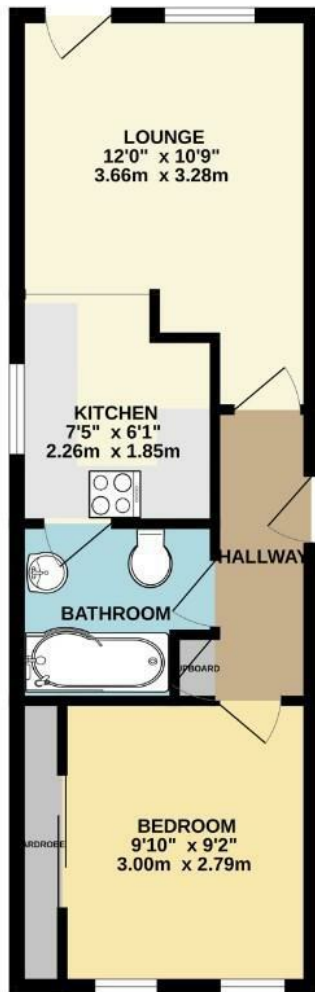
Two double glazed windows to front aspect complete with wooden French shutters. Radiator. Triple mirror fronted wardrobes with shelving and hanging space.





Energy Efficiency Rating		
	Current	Potential
Very energy efficient - lower running costs		
(92 plus) A		
(81-91) B		
(69-80) C		
(55-68) D		
(39-54) E		
(21-38) F		
(1-20) G		
Not energy efficient - higher running costs		
England & Wales	EU Directive 2002/91/EC 	

GROUND FLOOR
401 sq.ft. (37.2 sq.m.) approx.



TOTAL FLOOR AREA: 401 sq.ft. (37.2 sq.m.) approx.

Whilst every attempt has been made to ensure the accuracy of the floorplan contained here, measurements of doors, windows, rooms and any other items are approximate and no responsibility is taken for any errors, omission or mis-statement. This plan is for illustrative purposes only and should be used as such by any prospective purchaser. The services, systems and appliances shown have not been tested and no guarantee as to their operability or efficiency can be given.
Made with Metropix ©2026

These particulars, whilst believed to be accurate are set out as a general outline only for guidance and do not constitute any part of an offer or contract. Intending purchasers should not rely on them as statements of representation of fact, but must satisfy themselves by inspection or otherwise as to their accuracy. No person in this firm's employment has the authority to make or give any representation or warranty in respect of the property.