

henleys

ESTATE AGENCY SIMPLIFIED



CROMER ROAD

Mundesley, Norwich, NR11 8DU

Guide Price £215,000

Freehold

ESTATE AGENCY SIMPLIFIED

Cromer Road

Norwich,
NR11 8DU

Guide Price
£215,000

Freehold

- **Well appointed End Terrace Home**
- **No Chain**
- **Sea Glimpses**
- **Two Bedrooms**
- **Central Heating & Double Glazing**
- **Enclosed Westerly Rear Garden**
- **Allocated Parking**
- **Viewing highly recomended**
- **Modern Kitchen and Bathroom**

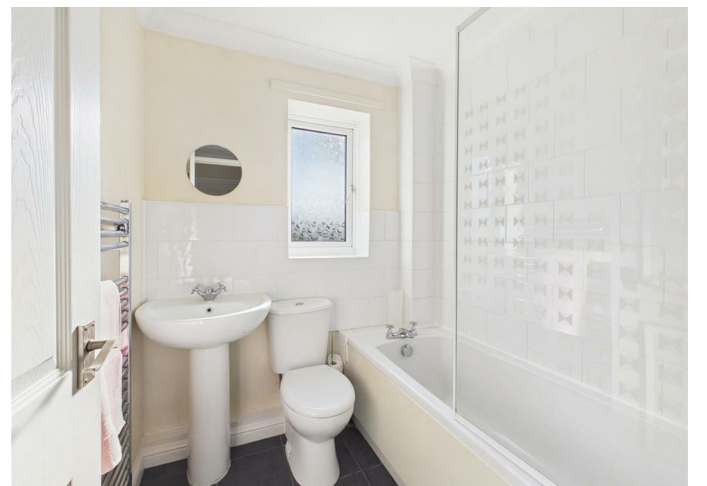
Tucked away within the ever-popular coastal village of Mundesley, The property is a beautifully presented two-bedroom end-of-terrace home that has been thoughtfully improved by the current owners, creating a welcoming and effortlessly stylish place to call home.

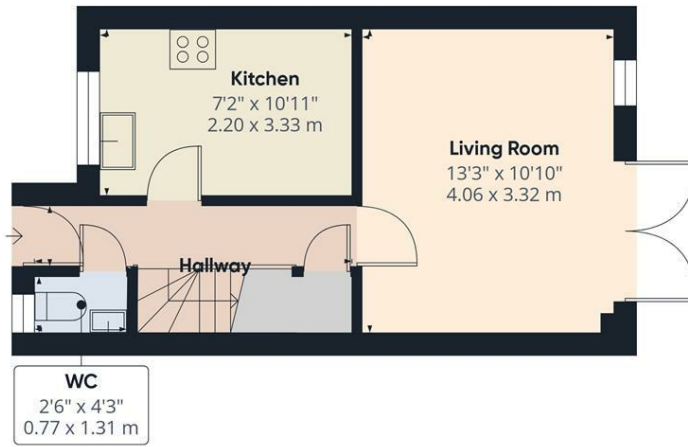
Inside, The property boasts gas fired central heating and Upvc double glazing, complemented by a contemporary kitchen and a modern bathroom, all finished with a keen eye for everyday living.

Outside, the enclosed garden offers a peaceful and low-maintenance retreat, with a westerly aspect, close boarded fencing and gated rear access, along with a private parking space to the rear.

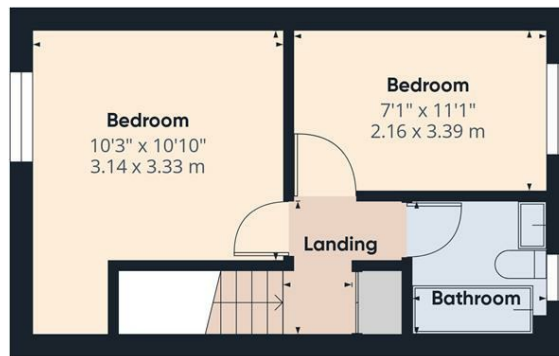
Perfectly positioned for enjoying village life, scenic walks and Mundesley's sandy beach, this charming home offers the ideal blend of coastal living, practicality and modern convenience with the added benefit of rooftop sea glimpses and no onward chain.







Ground Floor



Floor 1

Approximate total area⁽¹⁾
571 ft²
53 m²

(1) Excluding balconies and terraces

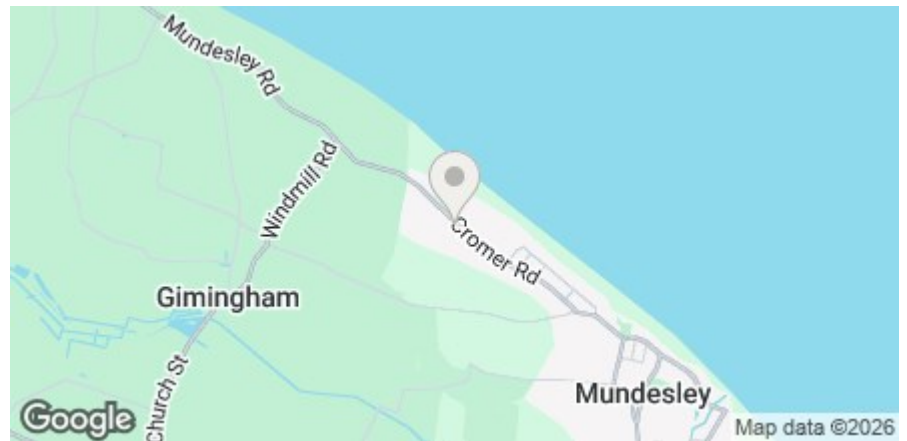
Calculations reference the RICS IPMS 3C standard. Measurements are approximate and not to scale. This floor plan is intended for illustration only.

GIRAFFE360



Energy Efficiency Rating

	Current	Potential
Very energy efficient - lower running costs		
(92 plus) A		
(81-91) B		89
(69-80) C	71	
(55-68) D		
(39-54) E		
(21-38) F		
(1-20) G		
Not energy efficient - higher running costs		
England & Wales	EU Directive 2002/91/EC	



15 West Street, Cromer, Norfolk, NR27 9HZ

01263 511111 • hello@henleyshomes.co.uk • henleyshomes.co.uk

These particulars and measurements whilst believed to be accurate, are set out as a general outline only for guidance and do not constitute any part of an offer or contract. Intending purchasers should not rely on them as statements of representation of fact, but must satisfy themselves by inspection or otherwise as to their accuracy. No person in this firm's employment has the authority to make or give representation or warranty in respect of the property.

