

**TO LET**



## **Wren House Orchard, Warminster**

**2 Bedrooms, 2 Bathroom, Over 55s  
Apartment**

**£1,100 pcm**



  
**MARTIN&CO**



## Wren House Orchard, Warminster

Over 55s Apartment,  
2 bedroom, 2 bathroom

£1,100 pcm

Date available: Available  
Now

Deposit: £1,265

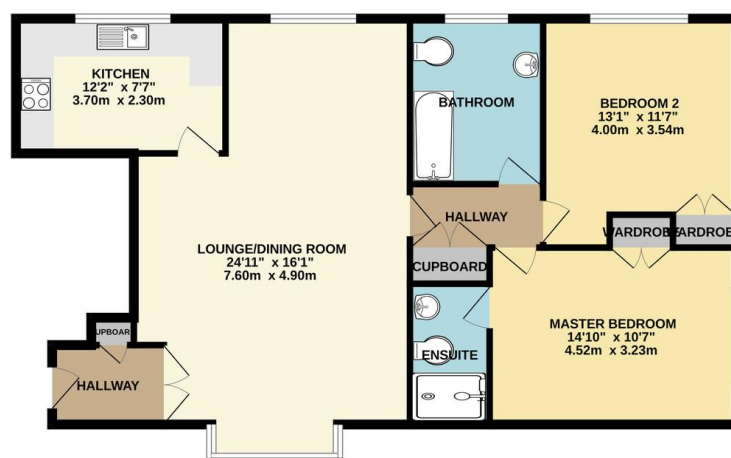
Holding deposit: £250

Unfurnished

Council Tax band: C

- Watch the video tour
- A two double bedroom first floor apartment - Over 55s complex
- Access to apartment via stairs or lift
- Open plan lounge/dining room
- Fitted kitchen
- En-suite to the master bedroom
- Communal gardens

Score	Energy rating	Current	Potential
92+	A		
81-91	B		
69-80	C		79 C
55-68	D	62 D	
39-54	E		
21-38	F		
1-20	G		



TOTAL FLOOR AREA : 981 sq.ft. (91.1 sq.m.) approx.  
While every attempt has been made to ensure the accuracy of the floorplan contained herein, measurements of doors, windows, rooms and any other items are approximate and no responsibility is taken for any error, omission or misstatement. This plan is for guidance purposes only and should be used as such by any prospective purchaser. The services, systems and appliances shown have not been tested and no guarantee as to their operability or efficiency can be given.  
Made with Metreplex C025

A beautifully maintained and spacious two double bedroom over 55s retirement apartment situated within a beautiful setting, close to local amenities boasting communal gardens and allocated parking.

## Martin & Co Westbury

7 Palomino Place • Westbury • Wiltshire • BA13 3SD  
T: 01373 866686 • E: westbury@martinco.com

01373 866686

<http://www.martinco.com>



**Accuracy:** References to the Tenure of a Property are based on information supplied by the Seller. The Agent has not had sight of the title documents. A Buyer is advised to obtain verification from their Solicitor. Items shown in photographs including but not limited to carpets, fixtures and fittings are not included unless specifically mentioned within the sales particulars. They may however be available by separate negotiation. Buyers must check the availability of any property and make an appointment to view before embarking on any journey to see a property. No person in the employment of the agent has any authority to make any representation about the property, and accordingly any information given is entirely without responsibility on the part of the agents, sellers(s) or lessors(s). Any property particulars are not an offer or contract, nor form part of one. **Sonic / laser Tape:** Measurements taken using a sonic / laser tape measure may be subject to a small margin of error. **All Measurements:** All Measurements are Approximate. **Services Not tested:** The Agent has not tested any apparatus, equipment, fixtures and fittings or services and so cannot verify that they are in working order or fit for the purpose. A Buyer is advised to obtain verification from their Solicitor or Surveyor.