

31b Hillary Rise

Barry, Barry

Three bedroom mid-terrace with open plan living, fitted kitchen and office space, offered with no onward chain. Ideal for first time buyers or investors. Convenient location near amenities and transport links!

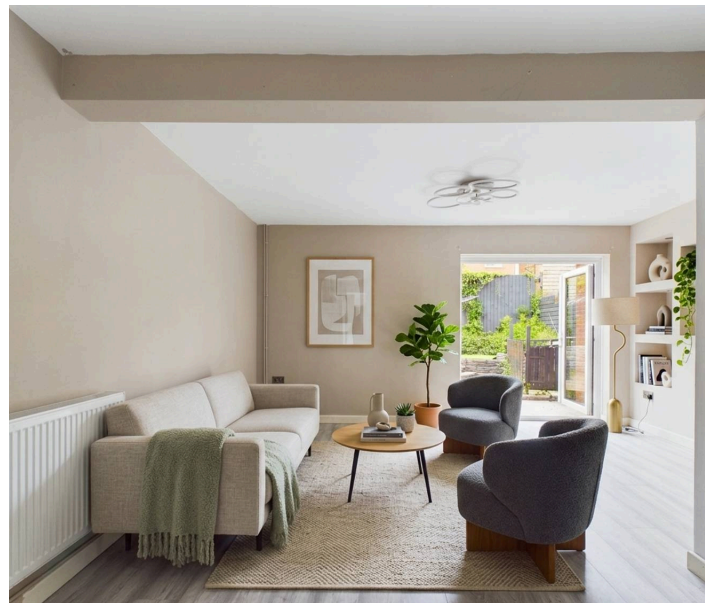
Council Tax band: C

Tenure: Freehold

EPC Energy Efficiency Rating: C

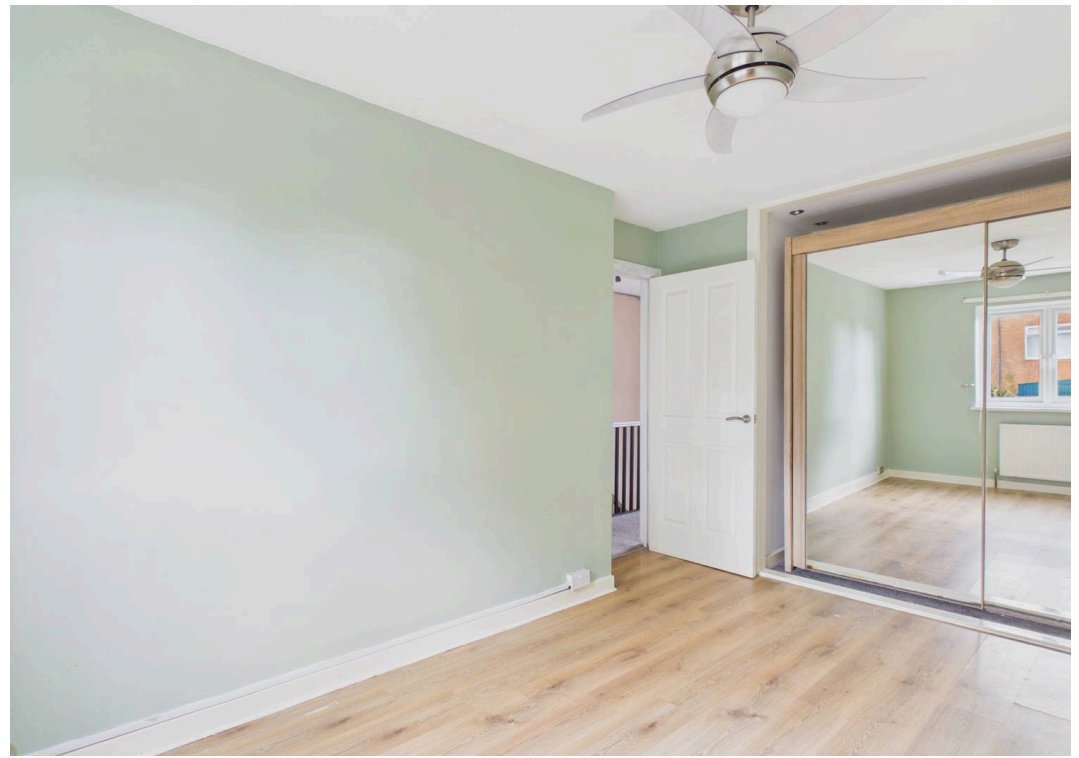
EPC Environmental Impact Rating: C

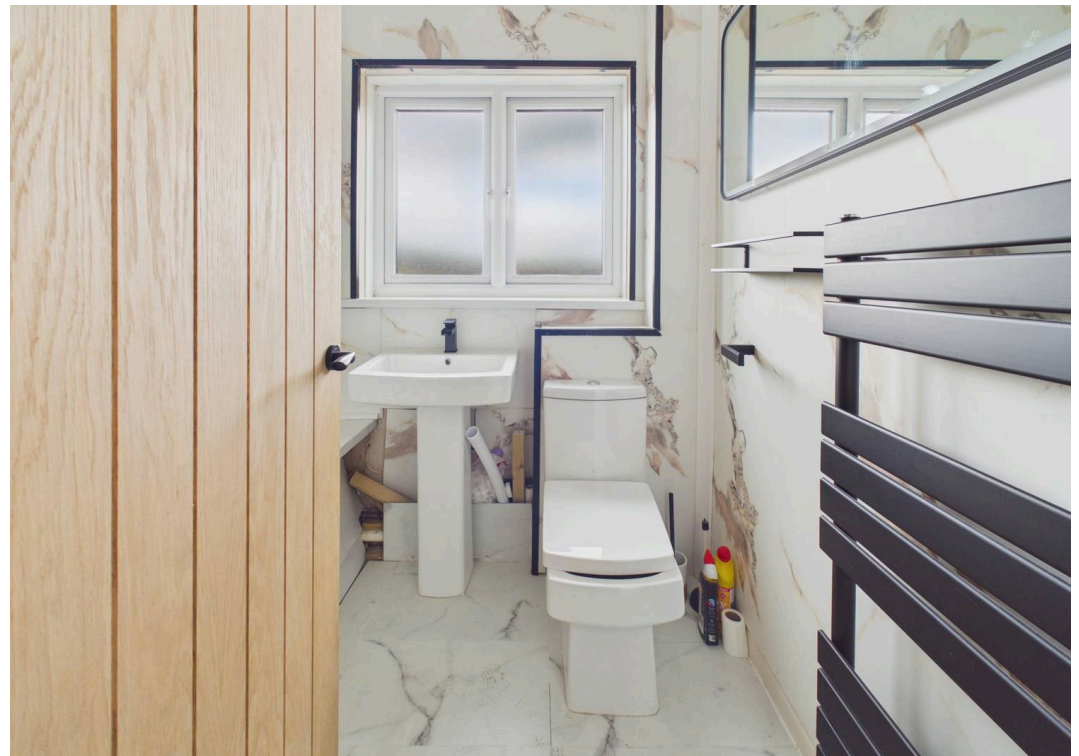
- NO ONWARD CHAIN
- IDEAL FIRST TIME BUY OR INVESTMENT OPPORTUNITY
- OPEN PLAN LIVING/DINING ROOM IDEAL FOR ENTERTAINING
- FITTED KITCHEN
- OFFICE ROOM ACCESSIBLE VIA GARDEN
- THREE BEDROOMS
- FIRST FLOOR FAMILY BATHROOM
- ENCLOSED FRONT AND REAR GARDENS
- EPC C75

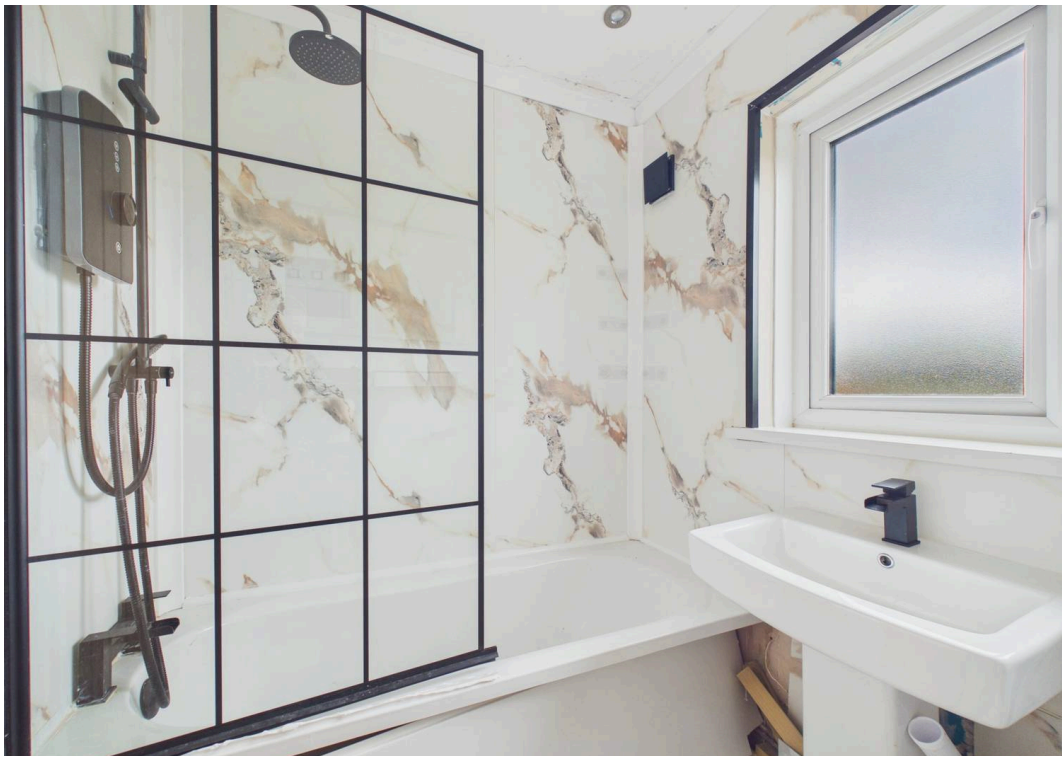


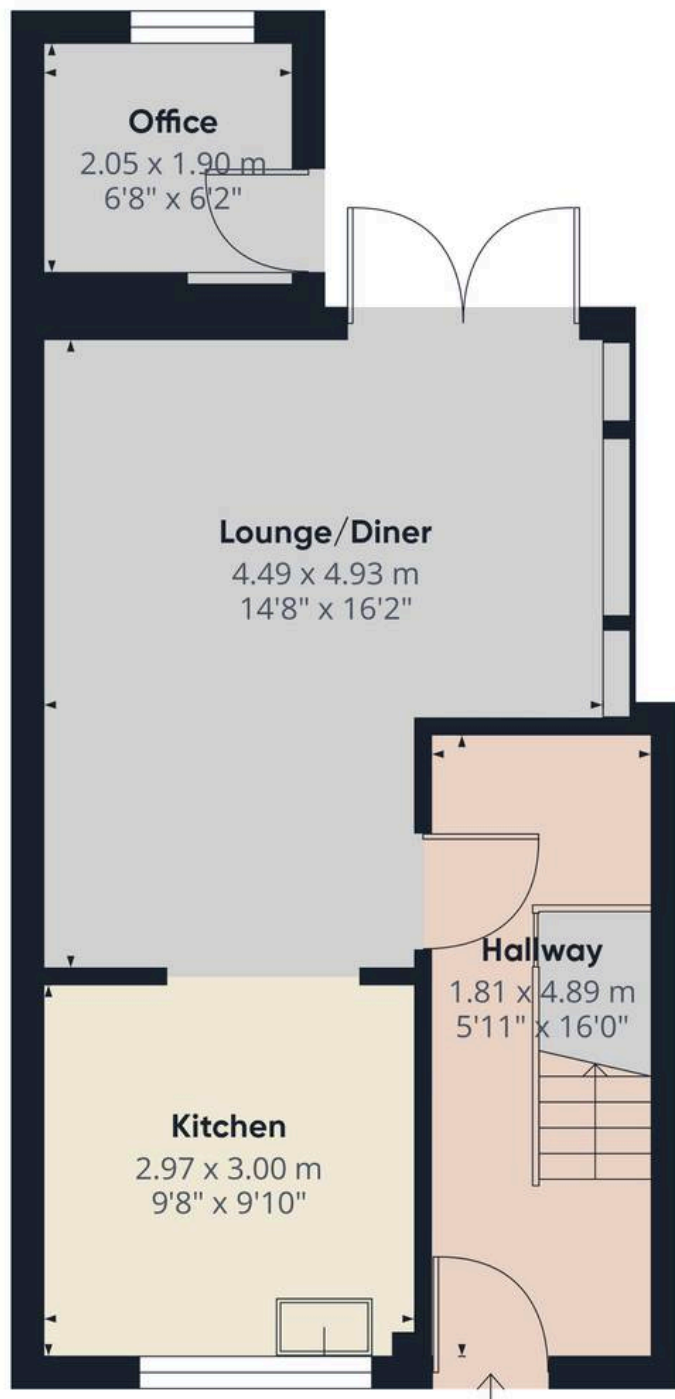












Ground Floor

Approximate total area⁽¹⁾

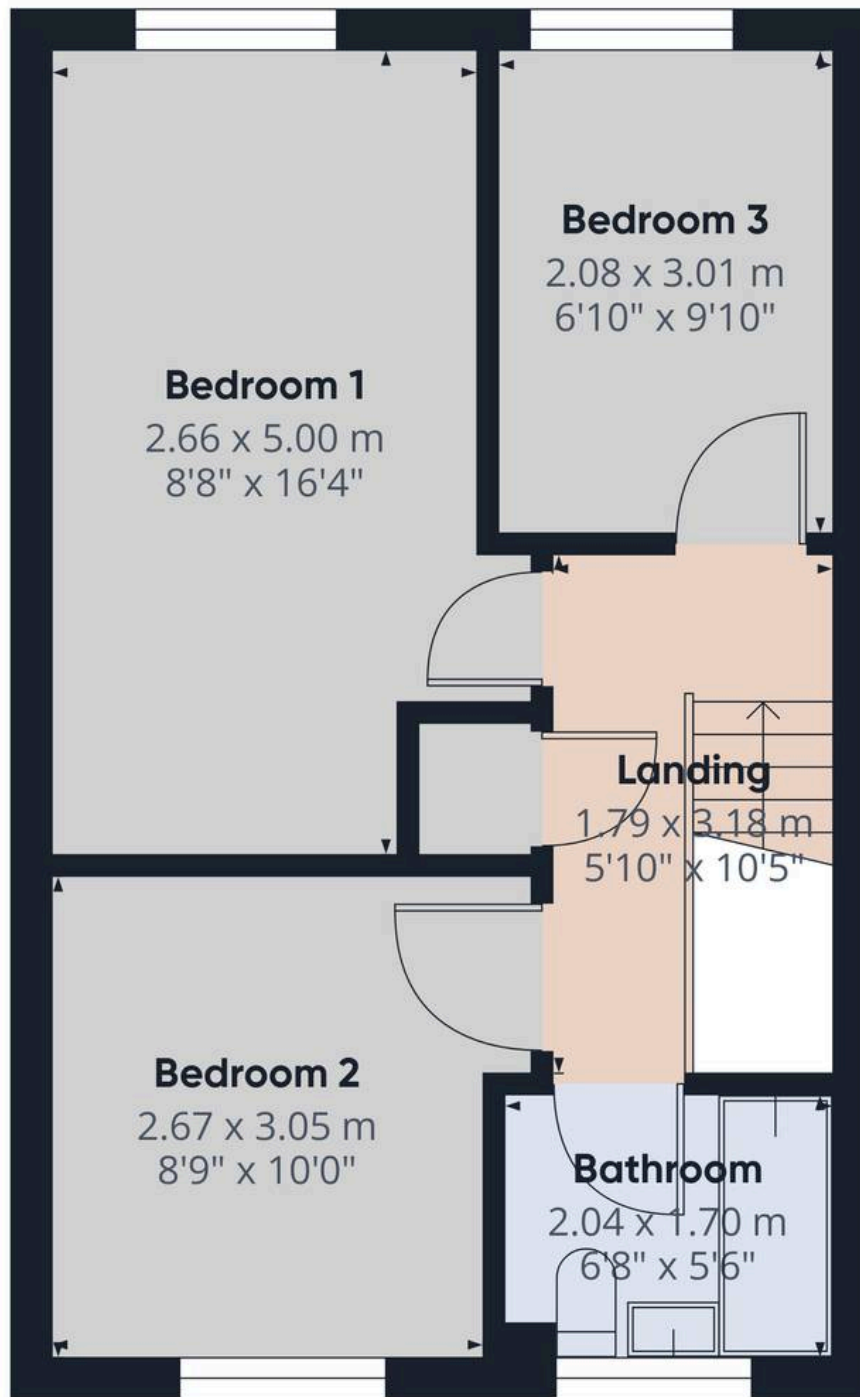
41.3 m²
445 ft²

(1) Excluding balconies and terraces

Calculations reference the RICS IPMS 3C standard. Measurements are approximate and not to scale. This floor plan is intended for illustration only.

GIRAFFE360





First Floor

Approximate total area⁽¹⁾

35.5 m²
383 ft²

(1) Excluding balconies and terraces

Calculations reference the RICS IPMS 3C standard. Measurements are approximate and not to scale. This floor plan is intended for illustration only.

GIRAFFE360





Chris Davies Estate Agents

Chris Davies Estate Agents, 24 High Street - CF62 7EA

01446 700007

barry@chris-davies.co.uk

www.chris-davies.co.uk/

HELPFUL INFORMATION - whilst we try to ensure our sales particulars are complete, accurate and reliable, if there is any point which is particularly important, please ask and we will be happy to check it, including specific information in respect of commuting links, surroundings, noise, views, or condition. For security purposes, applicants who wish to view will need to provide their name, address and telephone number. All measurements are approximate to the widest and longest points. Buyers are advised to instruct a solicitor to obtain verification of tenure and a surveyor to check that appliances, installations and services are in satisfactory condition.