

84A GLOUCESTER ROAD BRIGHTON, BN1 4AP

£1,750 PCM

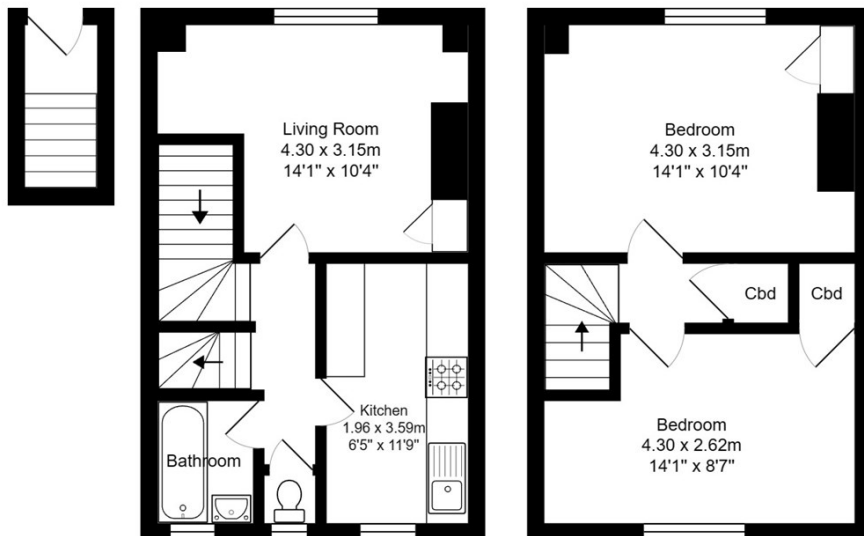
Beautifully presented two-bedroom maisonette in the heart of Brighton North Laine's. Occupying the first and top floor this split-level property benefits from bright and spacious accommodation comprising, two double bedrooms both with built in storage, kitchen with appliances, south facing living room, bathroom and separate WC.

The location speaks for itself with the historic North Laine conveniently positioned to enjoy all the City has to offer, not to mention the range of popular boutique shops, independent cafes, and restaurants all on your doorstep. Brighton mainline station is moments away offering regular and direct links to London and Brighton seafront is also close by.

**Nicholas
James**

SALES LETTINGS AUCTIONS





Gloucester Road

Total Area: 65.0 m² ... 700 ft²

All measurements are approximate and for display purposes only.



Energy Efficiency Rating		Current	Potential
Very energy efficient - lower running costs			
(92 plus) A			
(81-91) B			
(69-80) C			77
(55-68) D		65	
(39-54) E			
(21-38) F			
(1-20) G			
Not energy efficient - higher running costs			
England & Wales		EU Directive 2002/91/EC	

Agents Note: Whilst every care has been taken to prepare these particulars, they are for guidance purposes only. All measurements are approximate and are for general guidance purposes only and whilst every care has been taken to ensure their accuracy, they should not be relied upon and potential buyers/tenants are advised to recheck the measurements

Hove Lettings
 Ground Floor 8 The Drive
 Hove
 East Sussex
 BN3 3JA

01273 917915
 hello@nicholasjamesproperty.co.uk
 www.nicholasjamesproperty.co.uk

**Nicholas
 James**

SALES LETTINGS AUCTIONS