



Nestled in the heart of the village, this cosy apartment is warm and inviting, perfect for those who cherish a close-knit community. You will wake up to the gentle sounds of village life, with a short stroll to the local bakery, and where independent shops, cafes & seasonal events bring everyone together. Here lies a superb opportunity to purchase a characterful duplex apartment with wonderful original features, featuring exposed timbers and tall sash windows, with a homely feel throughout and all the modern conveniences you could hope for. Listed Grade II.

Arranged over two floors, the accommodation commences with a private internal staircase accessed via a door from a shared lobby. The staircase leads to the first floor living room, with a wonderful height and an open feel, with a feature fireplace forming the focal point in addition to the tall sash window overlooking the High Street. A kitchen/breakfast room is set to rear, fitted with a range of wall and base units.

A feature staircase gives access to the second floor, which provides two bedrooms and a bathroom.

Externally the property benefits from an allocated parking space to the rear, and Ingatestone station is within a 5 to 7 minute walk.

- Characterful Grade II Listed duplex apartment arranged over two floors
- Wealth of original features including exposed timbers and tall sash windows
- Allocated parking space to the rear
- Ideal first-time purchase, downsizer or investment opportunity
- Moments from independent shops, cafés, bakery and local amenities
- Spacious living room with feature fireplace and elevated views over the High Street



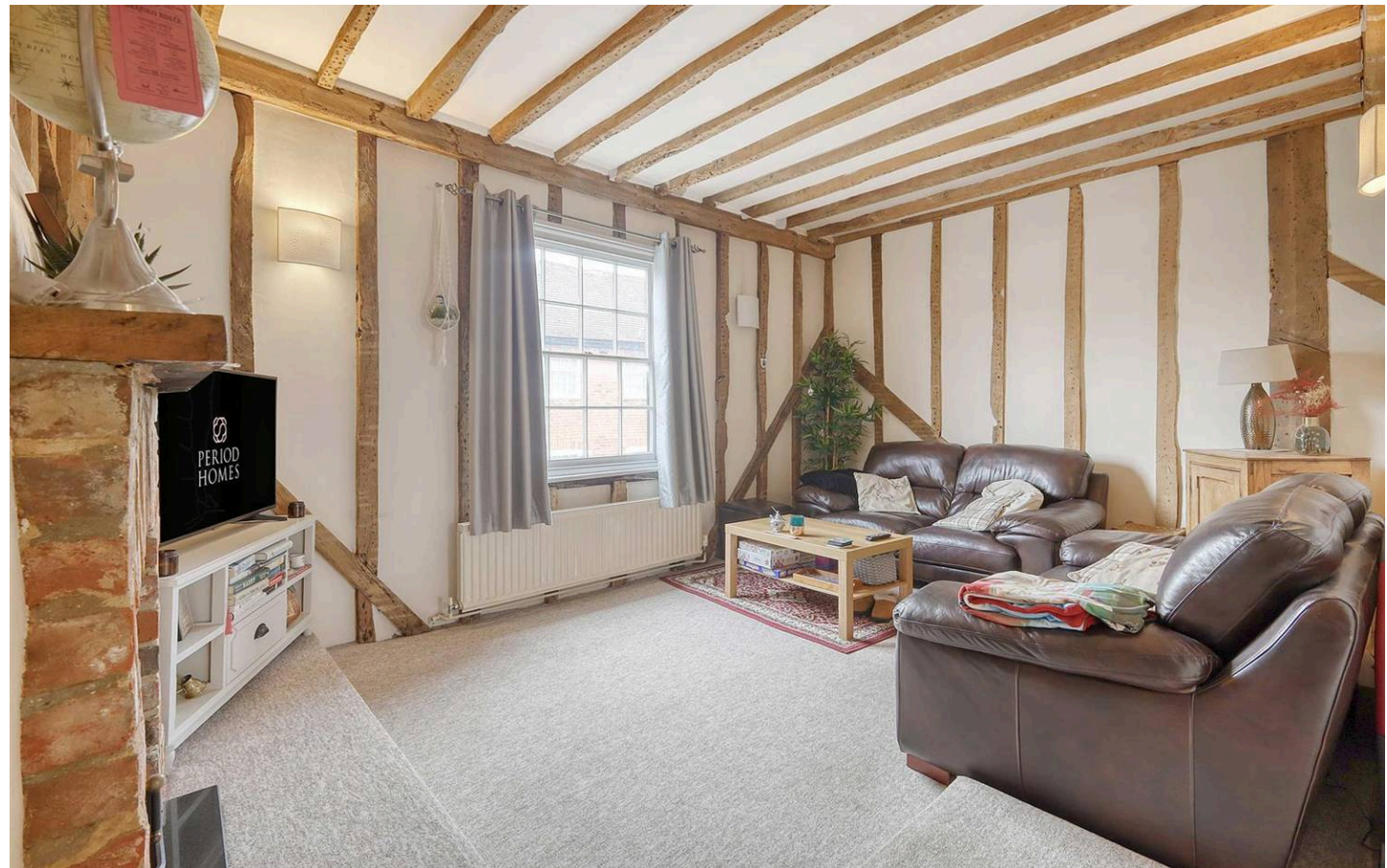
High Street

Ingatestone. CM4 0BA

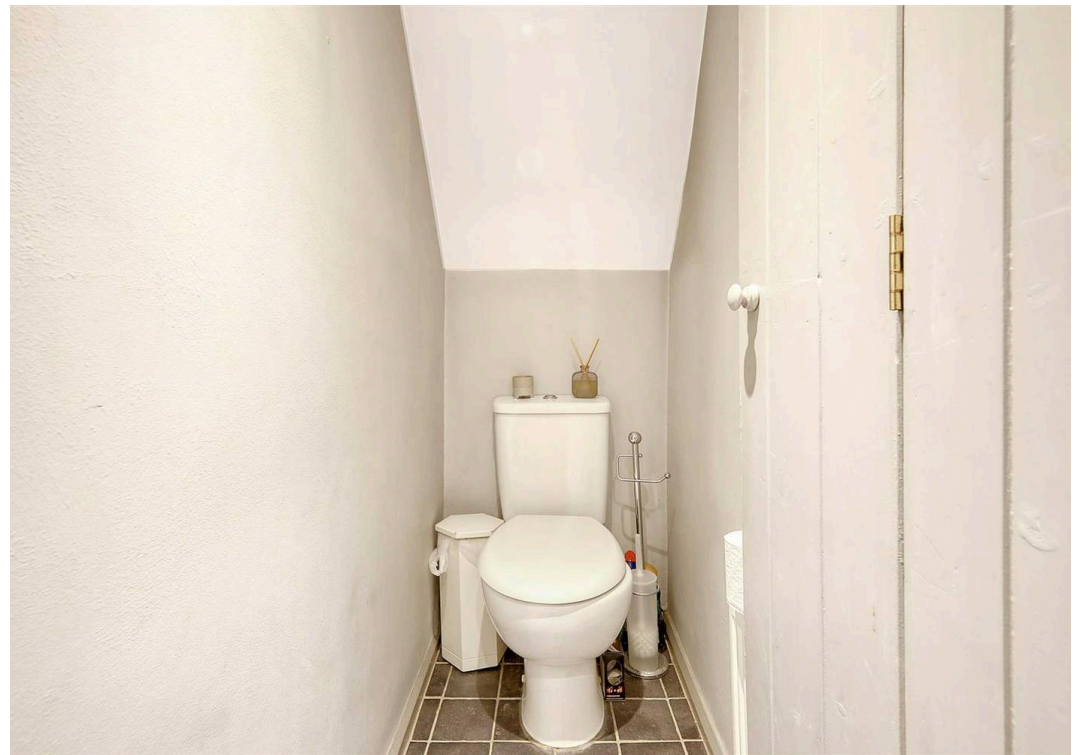
Nestled in the heart of the village, this cosy apartment is warm and inviting, perfect for those who cherish a close-knit community. You will wake up to the gentle sounds of village life, with a short stroll to the local bakery, and where independent shops, cafes & seasonal events bring everyone together.

Council Tax band: D

Tenure: Share of Freehold





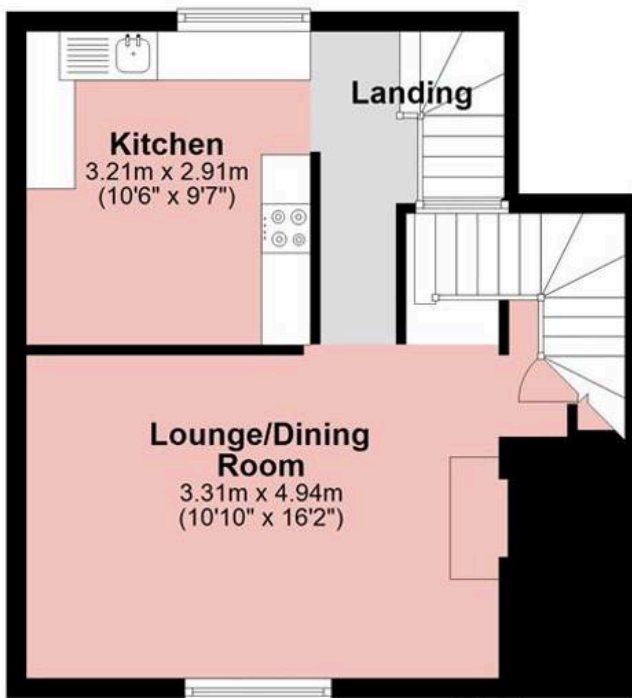




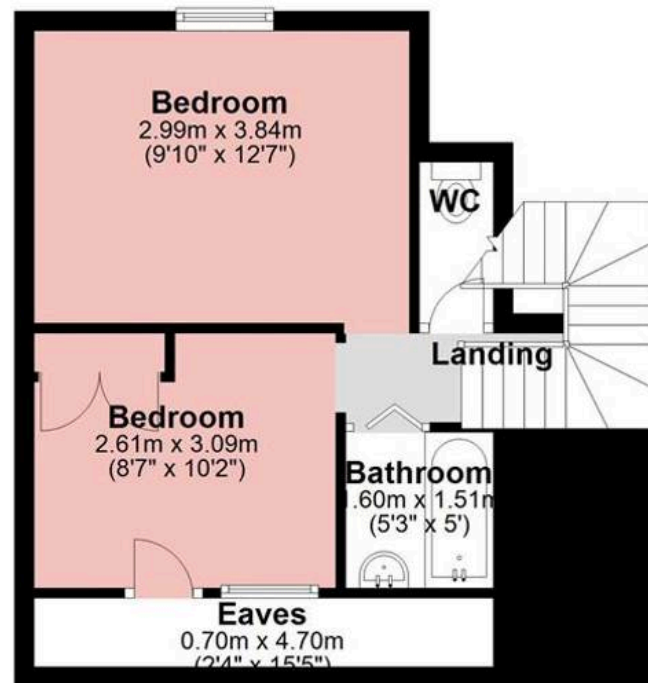
Ground Floor
Approx. 3.3 sq. metres (35.9 sq. feet)



First Floor
Approx. 37.8 sq. metres (406.4 sq. feet)



Second Floor
Approx. 34.6 sq. metres (372.6 sq. feet)



Total area: approx. 75.7 sq. metres (814.9 sq. feet)

High Street

About Us

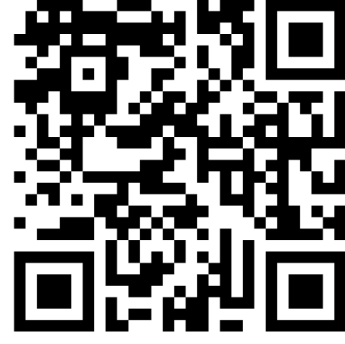
From charming cottages to country estates, all our homes have a story to tell... 'Period Homes' is one of a kind, an agency dedicated to the sale of character and period properties across Essex.

If you would like to buy a period home but you have a modern home to sell first, we can assist via our sister company, Walkers, which just so happens to have been voted Britain's Best Estate Agency in the British Property Awards. That way, both elements of your move are in the very best of hands.

Get In Touch



Browse Properties



Contact Us
01277 288000



Our Website
periodhomes.co.uk



Our Address
Eaton House
High Street
Ingestone
CM4 9DW



PERIOD
HOMES

Psst... Have you heard of discreet marketing?

Many people lose out on their dream home to someone in a better position.

Often, it is because they have delayed putting their house on the market, preferring to find somewhere first and then sell.

That is why we have innovated a totally unique and highly confidential moving home solution to put you in a competitive position.

Let us find you a buyer without any advertising or pressure and without the neighbours knowing.

Your secret is safe with us...

Get in touch for a complimentary valuation.

Looking To Sell Or Let Your Home?

Book your free valuation to see how much your home is worth.