



**Linden Close, Ruislip, HA4 8TN**

**In Excess of £750,000 | Freehold**



**LAWRENCE RAND**





## Key Features & Description

- Four bedroom end of terrace family house
- Two receptions
- Two bathrooms
- Utility room & Study
- Well presented throughout
- Sought after location
- Outbuilding with full electric

Set in a highly sought-after location, this beautifully presented four-bedroom end-of-terrace family home offers flexible, light-filled living ideal for modern life. A welcoming entrance hall leads to two stylish reception rooms, perfect for entertaining or relaxing with family, while the modern open-plan family kitchen with breakfast bar forms the heart of the home, complemented by a separate utility room for added practicality. A dedicated study makes working from home easy, and four generous bedrooms provide comfortable spaces for everyone, with the principal bedroom offering a calm and spacious retreat. Two contemporary bathrooms add everyday convenience. Outside, an outbuilding with electricity offers excellent versatility, ideal as a home gym, studio or storage. Positioned in a friendly neighbourhood close to excellent schools, shops, restaurants, parks and transport links, this move-in-ready home combines comfort, space and location perfectly.

*Presented with care by Lawrence Rand—helping you find the place you'll love to call home.*







## Nearest Stations

Ruislip Manor Station – 0.2 miles

Ruislip Gardens Station – 0.5 miles

Ruislip Station – 0.62 mile

## Additional Information

Council Tax band: E

EPC Energy Efficiency Rating: D

## Suppliers

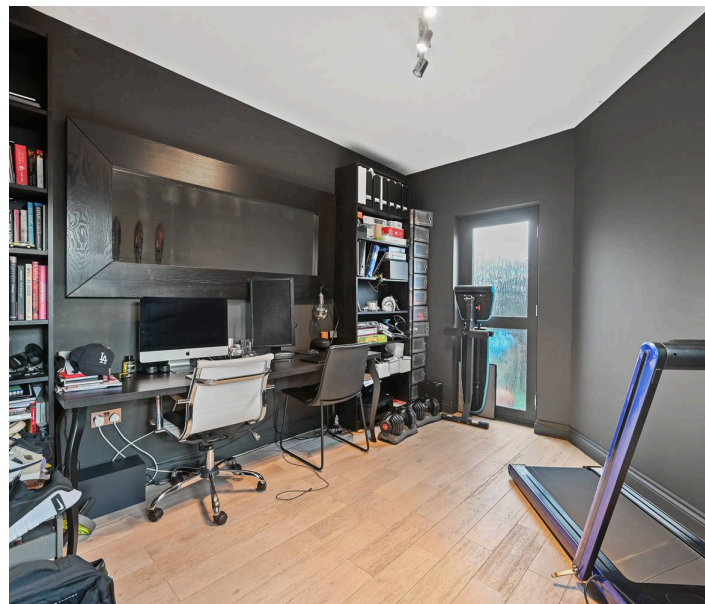
Electricity supply: Mains, Water supply: Mains  
water, Sewerage: Mains

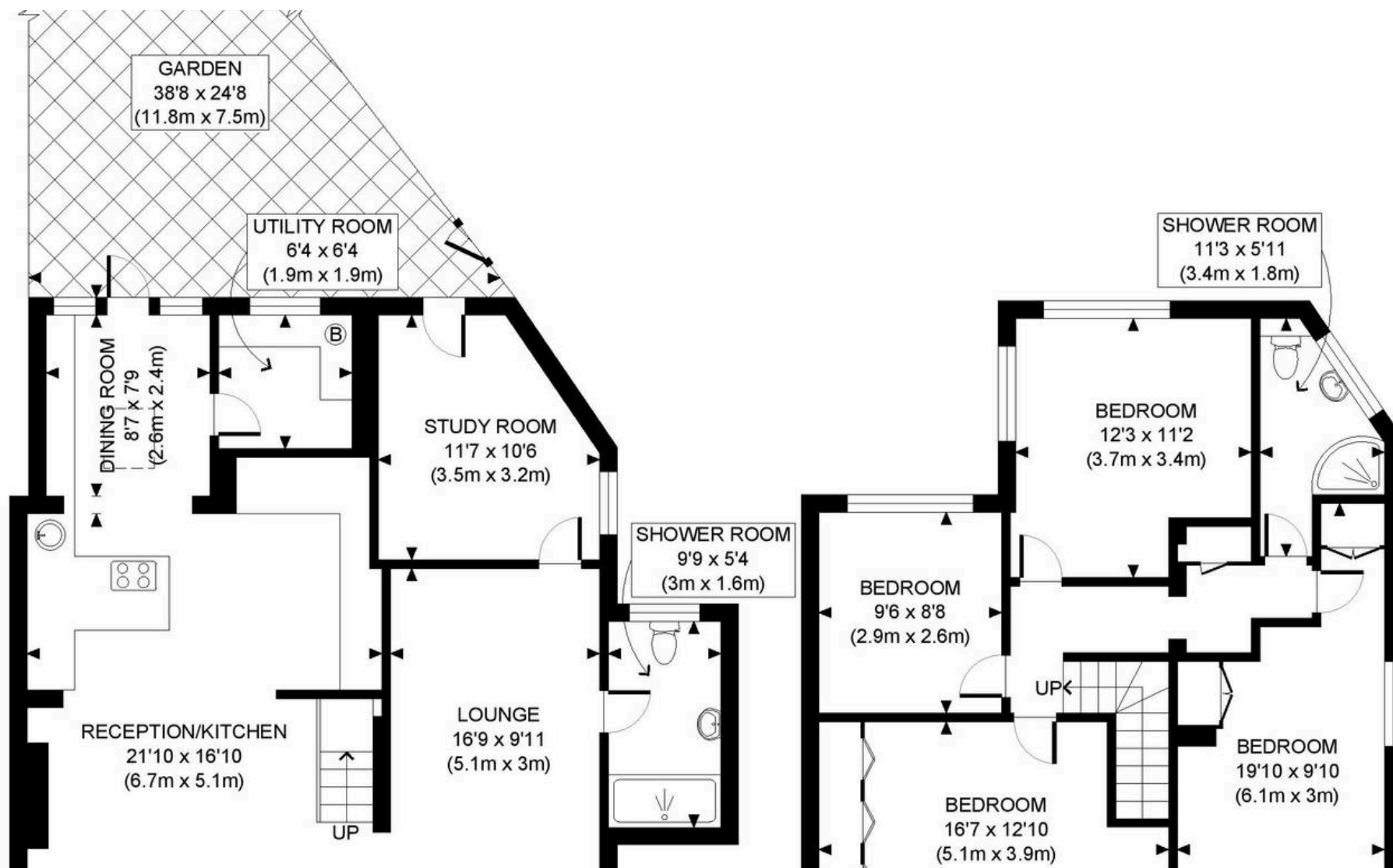
Heating: Gas central heating

## Broadband & mobile coverage

Broadband: FTTP (Fibre to the Premises)

Mobile coverage: O2 – Excellent, Vodafone –  
Excellent, Three – Excellent, EE – Excellent





**Lawrence Rand**

51 Victoria Road, Ruislip - HA4 9BH

01895 632211

[Sales@lawrence-rand.co.uk](mailto:Sales@lawrence-rand.co.uk)

[www.lawrence-rand.co.uk](http://www.lawrence-rand.co.uk)

Lawrence Rand Limited has made every reasonable effort to ensure the accuracy of the information provided. However, we accept no responsibility for errors, omissions, or misstatements. All measurements, distances, and descriptions are approximate and for guidance only. Prospective purchasers or tenants must verify all details independently. Some images may include AI-generated virtual staging to illustrate the potential of the property and are for visual guidance only. No warranty is given or implied, and these particulars do not form part of any offer or contract. Lawrence Rand reserves the right to amend or withdraw any property without notice.