



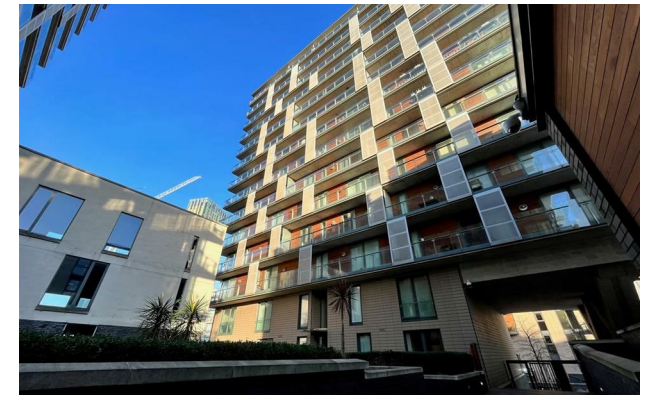
Jordan fishwick

Apt 348 Spectrum, Block 7, M3 7BY
£1,000 Per Calendar Month



Spectrum Blackfriars Road M3 7BY

£1,000 Per Calendar Month



The Property

PLEASE NOTE - THERE WILL BE BUILDING MAINTENANCE OCCURRING ON THE BUILDING FROM FEBRUARY 2027. DISRUPTIONS MAY OCCUR DURING THE TENANCY

Available Mid July. A lovely ground floor one bedroom apartment located in Spectrum, just a short walk to Deansgate and nearby Spinningfields. The apartment is furnished to a good standard and is in excellent condition throughout. There is entrance leading to open plan living area and patio door to a private decked terrace in the communal grounds of the block, kitchen with high quality integrated appliances. Bathroom with mirrored storage cupboards and mixer shower. Larger than average bedroom with fitted wardrobes. Furnished. No Parking. Council Tax Band B. EPC Rating C.


REPOSIT (Nil Deposit option) Available for this property.

VIDEO OFFERS NOT ACCEPTED - PLEASE BOOK AN INPERSON VIEWING



- Available Mid July
- Ground Floor - One Bedroom
- Large Decked Area
- Popular Development
- Furnished
- Council Tax Band B
- EPC Rating C
- REPOSIT (Nil Deposit Option) Available
- No parking



Energy Efficiency Rating		
	Current	Potential
Very energy efficient - lower running costs		
(92 plus) A		
(81-91) B		
(69-80) C	74	78
(55-68) D		
(39-54) E		
(21-38) F		
(1-20) G		
Not energy efficient - higher running costs		
England & Wales	EU Directive 2002/91/EC 	





These particulars are believed to be accurate but they are not guaranteed and do not form a contract. Neither Jordan Fishwick nor the vendor or lessor accept any responsibility in respect of these particulars, which are not intended to be statements or representations of fact and any intending purchaser or lessee must satisfy himself by inspection or otherwise as to the correctness of each of the statements contained in these particulars. Any floorplans on this brochure are for illustrative purposes only and are not necessarily to scale.

Offices at: Offices at Chorlton, Didsbury, Disley, Hale, Glossop, Macclesfield, Manchester Deansgate, Manchester Whitworth Street, New Mills, Sale, Wilmslow and Withington