



Guide Price
£675,000

Freehold

4x  2x  3x 

**Broomfields, Hartley,
Longfield, Kent, DA3**

OVER 60?

Secure this property
for up to **59% less!**

Wards
Helping you move forwards



Main features

- **Garage and driveway for multiple vehicles**
- **Potential for extensions and interior redesign (subject to consents)**
- **Close to shops and train station**
- **Generous proportioned bedrooms and versatile living space**
- **Utility room located just off the kitchen**

Accommodation

GROUND FLOOR

Hallway

Cloakroom: 5'0 x 3'7 (1.53m x 1.09m)

Lounge: 15'5 x 14'5 (4.70m x 4.40m)

Dining Room: 10'11 x 9'0 (3.33m x 2.75m)

Study: 10'0 x 7'8 (3.05m x 2.34m)

Kitchen: 10'6 x 9'5 (3.20m x 2.87m)

Utility Room: 8'7 x 5'5 (2.62m x 1.65m)

FIRST FLOOR

Landing

Bedroom 1: 11'7 x 9'2 (3.53m x 2.80m)

Ensuite Shower Room: 6'1 x 5'0 (1.86m x 1.53m)

Bedroom 2: 10'6 x 10'6 (3.20m x 3.20m)

Bedroom 3: 10'6 x 7'0 (3.20m x 2.14m)

Bedroom 4: 9'11 x 8'7 (3.02m x 2.62m)

Bathroom: 8'1 x 5'7 (2.47m x 1.70m)

OUTSIDE

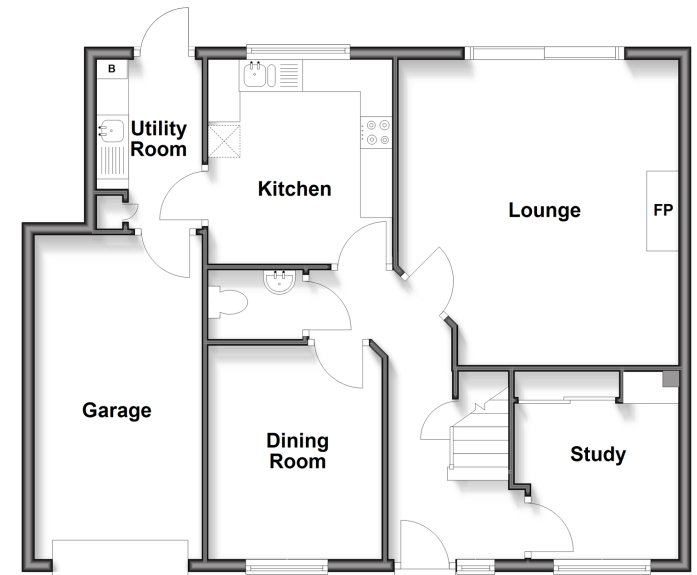
Driveway

Garage: 16'11 x 8'8 (5.16m x 2.64m)

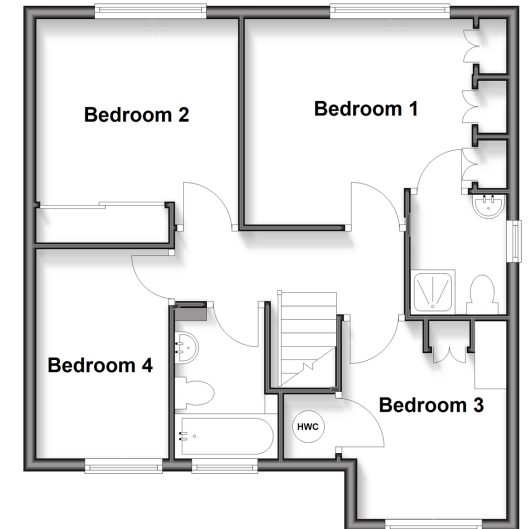
Front Garden

Wrap Around Garden

Ground Floor
Approx. 76.5 sq. metres (823.0 sq. feet)



First Floor
Approx. 52.7 sq. metres (567.3 sq. feet)



Call New Ash Green - 01474 872466 ■ wardsforkent.co.uk

- Legal advice should be taken to verify fixtures/fittings, planning, alterations and/or lease details
- Appliances & services are untested, dimensions are approximate and floor plans are not to scale
- Through a Homewise Home For Life Plan people aged 60+ can secure this property for up to 50% less, by purchasing a Lifetime Lease.



13415289/20251120/RF/HF