



COLVILLE GARDENS, W11

£315,000

Gated Residential Development
Well Presented Studio Flat
Recently Refurbished
Communal Garden
Third Floor
Lift

@marshandparsons
marshandparsons.co.uk

MARSH &
PARSONS



ABOUT THE PROPERTY

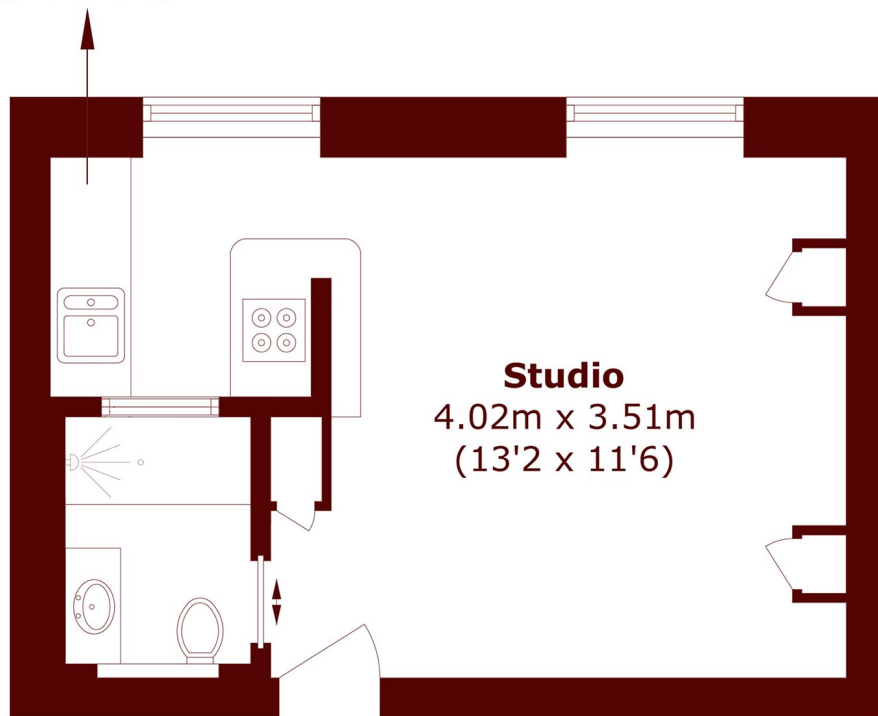
An attractive studio apartment on the third-floor (with lift) set within Pinehurst Court, a well-regarded building on Colville Gardens, Notting Hill.

Pinehurst Court is a beautiful, gated Victorian building wonderfully located on Colville Gardens, a quiet cul-de-sac just moments from the fabulous array of fashionable boutique shops, cafes and restaurants of Westbourne Grove, Ledbury Road and the world-renowned Portobello Road. There are excellent transport links close by with the Central, District and Circle line accessible from Notting Hill Gate.



STEP INSIDE COLVILLE GARDENS

Kitchen
2.34m x 1.83m
(7'8 x 6'0)



Studio
4.02m x 3.51m
(13'2 x 11'6)

Third Floor

Total area (approx.): 23.7 sq. m (255.1 sq. ft)

Notting Hill
020 7313 2890

Energy Rating: D We aim to make our particulars both accurate and reliable. However, they are not guaranteed; nor do they form part of an offer or contract. If you require clarification on any points then please contact us, especially if you're traveling some distance to view. Please note that appliances and heating systems have not been tested and therefore no warranties can be given as to their good working order

MARSH &
PARSONS