



DANIEL GREEN

exp<sup>®</sup> UK

@ daniel.green@exp.uk.com

🌐 danielgreen.exp.uk.com

☎ 020 3930 3550 / 07541 999 544

# Latimer Close

Guide Price £545,000

🛏 3 🚿 2 🚗 2



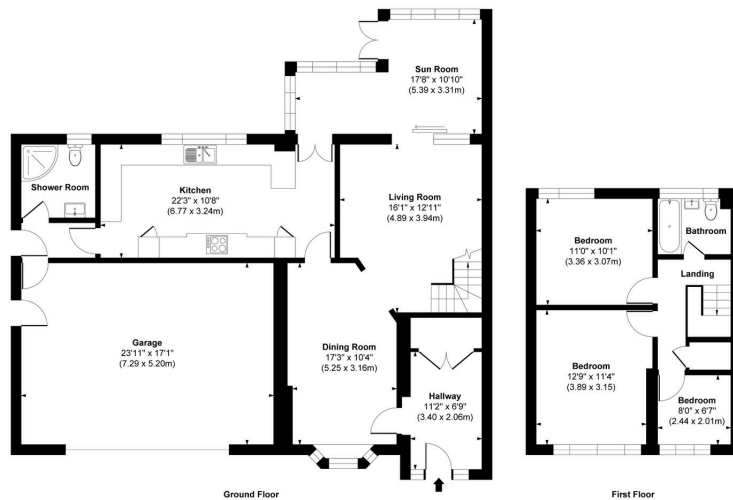
- **\*\*\*PLEASE QUOTE REFERENCE - DG1277\*\*\***
- Prestigious cul-de-sac location
- Two spacious reception rooms
- Ground-floor shower room
- Further extension potential (STPP)
- Extended three-bedroom end-of-terrace home
- Double garage and generous private driveway
- Bright & beautifully presented conservatory overlooking the rear garden
- Mature, private landscaped garden ideal for entertaining
- Close to excellent schools, amenities, and transport links



**\*\*\*PLEASE QUOTE REFERENCE - DG1277\*\*\***

**Exceptional Family Home | Double Garage | Prime Cul-de-Sac Setting | Outstanding Potential (STPP)**

A beautifully extended three-bedroom end-of-terrace home, tucked away in a peaceful cul-de-sac and offering the perfect balance of space, lifestyle, and future potential. Boasting two reception rooms, a bright conservatory, a downstairs shower room, a double garage, a private driveway, and a mature rear garden, this is a rare opportunity to secure a home that grows with your family.



Approx. Gross Internal Floor Area 1,724 sq. ft / 160.10 sq. m.  
This floorplan is intended for illustrative purposes only and should be used as a general guide. All measurements are approximate and not to scale. Exact dimensions should be independently verified.

