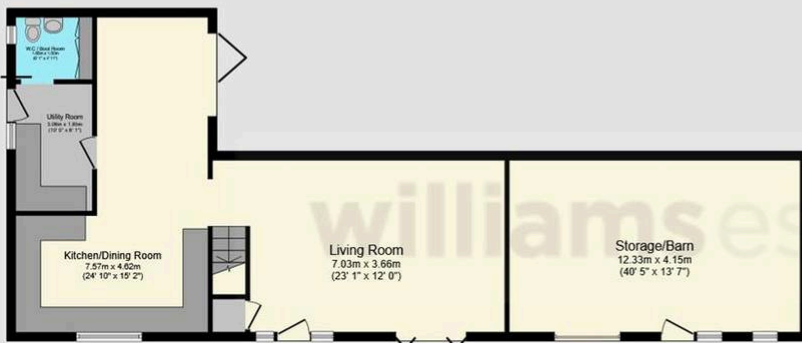


## The Barn, Pant Hoyw, LL21 9ND – £495,950

Tenure: Freehold | EPC: C | Council Tax: E Freehold

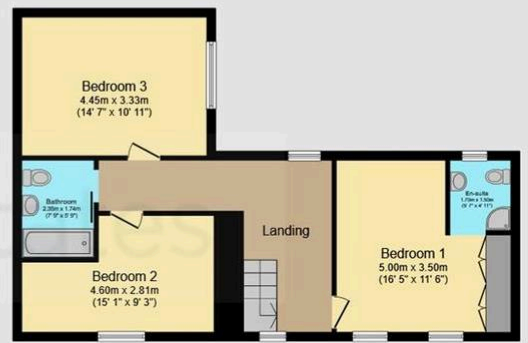
This beautifully converted detached stone and slated barn offers an exceptional blend of character and contemporary living, all set within a peaceful rural location and available with NO ONWARD CHAIN. Stunning views from the barn add a remarkable sense of tranquillity and connection to the surrounding countryside. The property boasts three bedrooms, spacious reception room and a newly fitted kitchen with dedicated dining space and a useful utility area, providing a practical layout ideal for both daily life and entertaining.

The spacious double garage, large garden, and ample parking cater to a variety of lifestyle needs, making this a perfect choice for families or those seeking a flexible home environment. Early viewing is strongly recommended to appreciate all that is on offer.



**Ground Floor**

Floor area 93.8 sq.m. (1,010 sq.ft.)



**First Floor**

Floor area 63.9 sq.m. (687 sq.ft.)

Total floor area: 157.7 sq.m. (1,697 sq.ft.)

This floor plan is for illustrative purposes only. It is not drawn to scale. Any measurements, floor areas (including any total floor area), openings and orientations are approximate. No details are guaranteed, they cannot be relied upon for any purpose and do not form any part of any agreement. No liability is taken for any error, omission or misstatement. A party must rely upon its own inspection(s). Powered by www.Propertybox.io



YOUR FREE  
**PROPERTY REPORT**



WE OFFER FREE ADVICE

**MORTGAGES - SURVEYS - SOLICITORS**

