



CHEVIOT ROAD, SE27

£800,000

- Semi-detached
- Three bedrooms
- Driveway
- Double garage
- South facing garden
- Energy rating: D





## ABOUT THE HOME

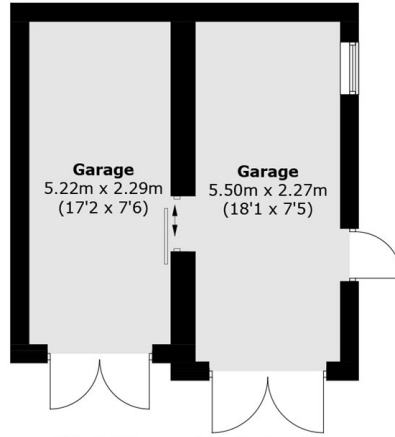
Offers in Excess of £800,000

This unique, double-fronted semi-detached home features a driveway, a south facing garden, and a rare double garage to the side. Situated less than half a mile from West Norwood station, the property offers significant potential to add value through modernisation or extension.

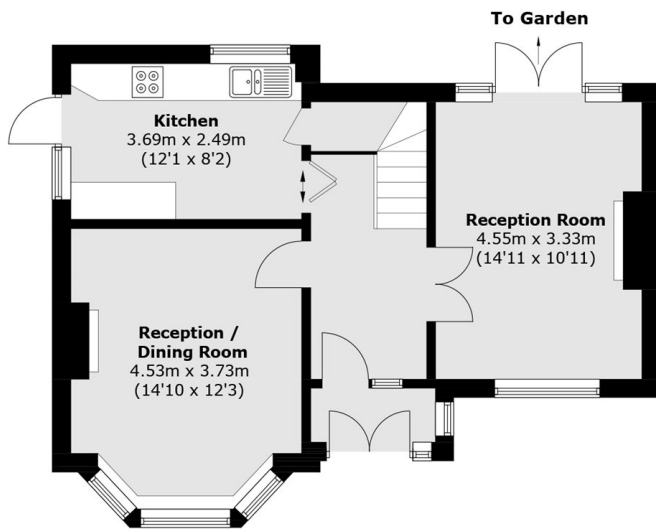
Cheviot Road is located in West Norwood and provides easy access to West Norwood station that services London Victoria and London Bridge. West Norwood High Street is a stone's throw away along with the reputable Julian's Primary School.



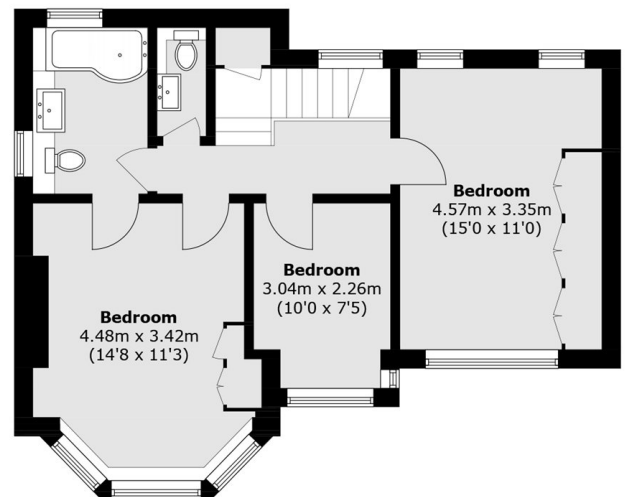




(Not Shown In Actual  
Location / Orientation)



**Ground Floor**



**First Floor**

Total area (approx.): 105.1 sq. m (1,131.3 sq. ft)  
Garages : 27.6 sq. m (297.1 sq. ft)

**JACKSONS STREATHAM**

1-3 De Montfort Parade,  
Streatham High Road,  
Sales: 020 8487 3179  
Lettings: 020 8487 3180

Energy Rating: D We aim to make our particulars both accurate and reliable. However they are not guaranteed; nor do they form part of an offer or contract. If you require clarification on any points then please contact us, especially if you're traveling some distance to view. Please note that appliances and heating systems have not been tested and therefore no warranties can be given as to their good working order.