

## Oakham Close, Catford, London, SE6 4LQ

- Two / three bedroom end terrace house
- Bathroom, plus separate shower room
- Private Driveway
- Catford Station 0.6 miles
- EPC C
- Open Plan Kitchen Diner Lounge
- Fitted kitchen
- Rear Garden
- Catford Bridge Station 0.7 miles
- Environmental Impact: This property produces 2.3 tonnes of CO2

**£2,000 Per Calendar Month**



# Oakham Close, Catford, London, SE6 4LQ

## DESCRIPTION

Two / three bedroom end of terrace house available to let. Open plan kitchen dining lounge plus a further reception room on the ground floor, which could be used as third bedroom. Upstairs there are two double bedrooms, a bathroom and a separate WC. There is a further shower room on the ground floor.

Rear garden, plus front driveway.

### Transport

Catford Bridge station 0.6 miles.

Catford station 0.7 miles.

### Shops and Cafes

250m to Tesco Express.

Forest Hill town centre is just over a mile away with delis, cafes, gastro pubs, independent shops, and the Horniman museum and park. Catford town centre is 0.8 miles away with The Broadway Theatre, Ladywell Fields, Tesco's, plus plenty of food choices - Turkish, Italian, Portuguese, Japanese, Chinese, Thai, plus the Catford Bridge Tavern and Lebanese Street Food restaurant, Fayrooz. To the south is Sainsbury's Savacentre and Bell Green Retail Park, 0.7 miles away.

Call Hunters Catford to arrange your viewing.

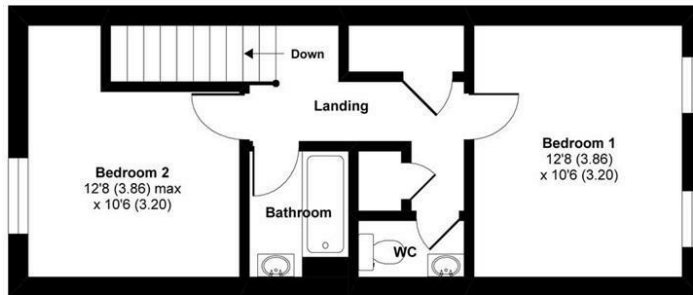




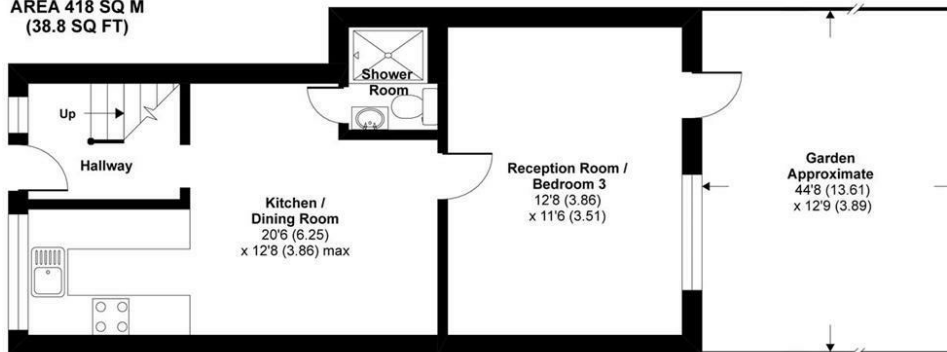
# Oakham Close, London, SE6

Approximate Area = 884 sq ft / 82.1 sq m

For identification only - Not to scale



**FIRST FLOOR  
APPROX FLOOR  
AREA 418 SQ M  
(38.8 SQ FT)**



**GROUND FLOOR  
APPROX FLOOR  
AREA 466 SQ M  
(43.3 SQ FT)**

 Floor plan produced in accordance with RICS Property Measurement Standards incorporating International Property Measurement Standards (IPMS2 Residential). © nichecom 2020. Produced for Hunters Property Group. REF: 680678

## Viewings

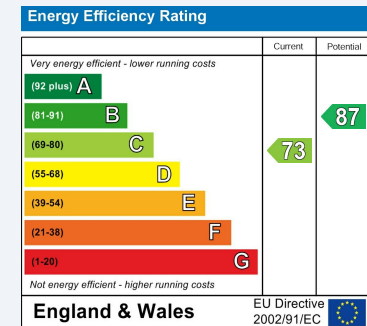
Please contact [catfordlettings@hunters.com](mailto:catfordlettings@hunters.com), if you wish to arrange a viewing appointment for this property or require further information.

## Valuations

For a valuation of your property, please email the team with your property details, contact information and the times you are available.

## ENERGY PERFORMANCE CERTIFICATE

The energy efficiency rating is a measure of the overall efficacy of a home. The higher the rating the more energy efficient the home is and the lower the fuel bills will be.



These particulars are intended to give a fair and reliable description of the property but no responsibility for any inaccuracy or error can be accepted and do not constitute an offer or contract. We have not tested any services or appliances (including central heating if fitted) referred to in these particulars and the purchasers are advised to satisfy themselves as to the working order and condition. If a property is unoccupied at any time there may be reconnection charges for any switched off/disconnected or drained services or appliances - All measurements are approximate.

**THINKING OF SELLING?** If you are thinking of selling your home or just curious to discover the value of your property, Hunters would be pleased to provide free, no obligation sales and marketing advice. Even if your home is outside the area covered by our local offices we can arrange a Market Appraisal through our national network of Hunters estate agents.



153 Rushey Green, Catford, SE6 4BD  
Tel: 02086987499 Email: [catfordlettings@hunters.com](mailto:catfordlettings@hunters.com) <https://www.hunters.com>

