



## SANDMERE ROAD, SW4

£580,000

Victorian conversion  
Period features  
Beautifully renovated  
South-facing garden  
Close to Clapham Common  
Share of freehold

@marshandparsons  
marshandparsons.co.uk

MARSH &  
PARSONS



# ABOUT THE PROPERTY

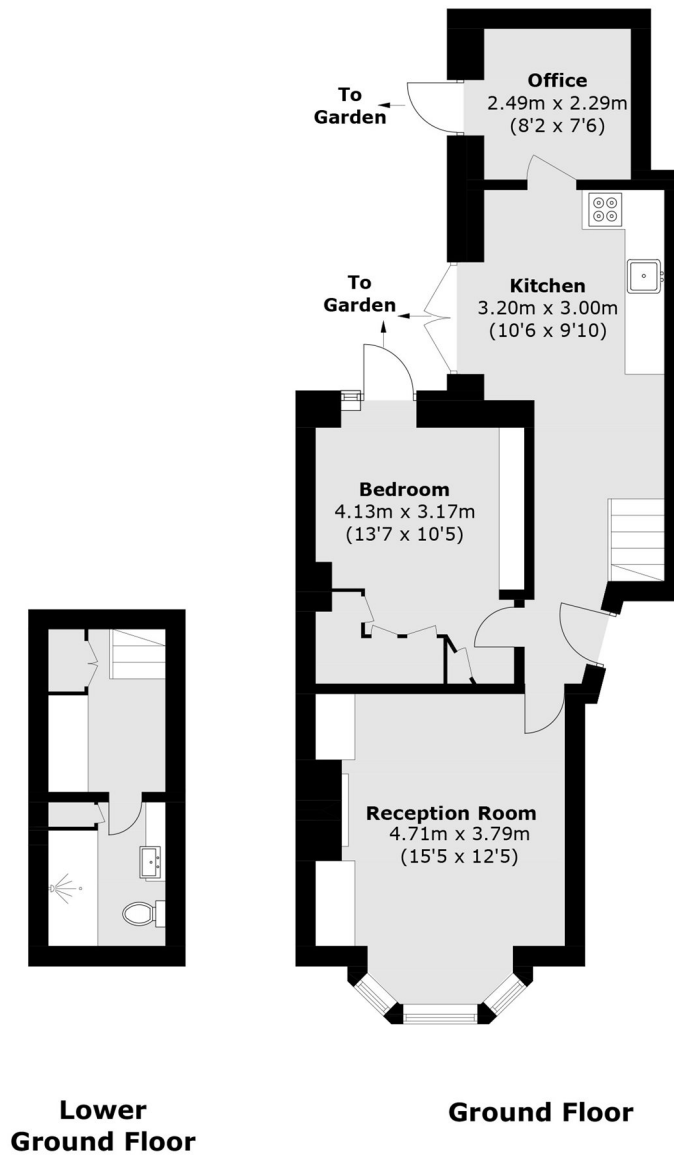
A beautifully presented two bedroom Victorian conversion flat with private south-facing garden, moments from Clapham Common and its vibrant amenities. Share of freehold.

This superb property has been recently renovated throughout and offers a generous master bedroom, second single bedroom/office, modern kitchen/breakfast room - all of which have direct access to the South facing patio garden. Other selling points include air conditioning in master bedroom and underfloor heating in the bathroom stylish bathroom.

Sandmere Road is a popular residential street sitting



# STEP INSIDE SANDMERE ROAD



Total area (approx.): 61.2 sq. m (658.7 sq. ft)

Clapham  
020 7501 3666

Energy Rating: D We aim to make our particulars both accurate and reliable. However, they are not guaranteed; nor do they form part of an offer or contract. If you require clarification on any points then please contact us, especially if you're traveling some distance to view. Please note that appliances and heating systems have not been tested and therefore no warranties can be given as to their good working order

MARSH &  
PARSONS