



Jordan fishwick

Market Street Chapel-En-Le-Frith High Peak



Market Street Chapel-En-Le-Frith High Peak SK23 0HY

£168,000



The Property

Occupying an ideal position in the centre of Chapel-en-le-frith, a charming one bedroom mid terraced property. Ready to walk into and ideal for first time buyers or buy to let investors. Pvc double glazing, gas central heating and comprising: entrance area, living room, kitchen, first floor double bedroom with built in wardrobes and a spacious bathroom with white suite. Communal front garden area and offered for sale with No Chain. Viewing highly recommended.



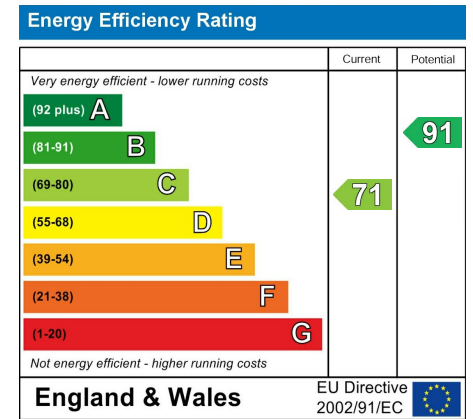
- Central Chapel-en-le-frith Location
- Well Presented Throughout
- Spacious One Bedroom Terraced Property
- Communal Frontage
- Pvc Double Glazing
- Gas central heating
- No Chain
- Ideal First Time Buy or Buy To Let

Postcode SK23 0HY

EPC Rating C

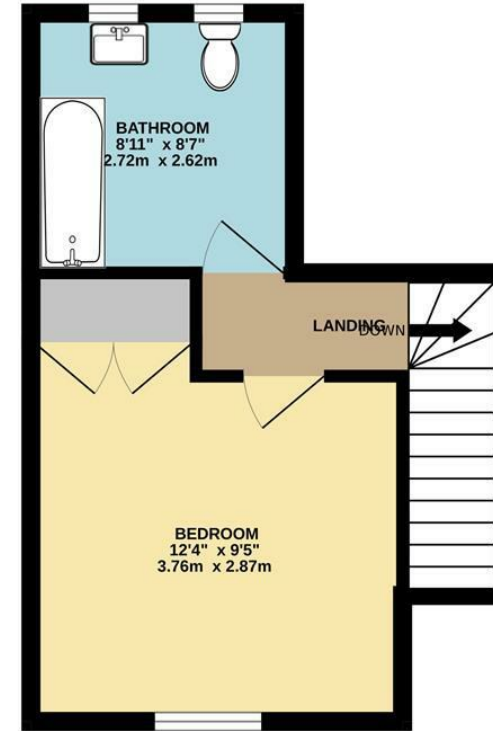
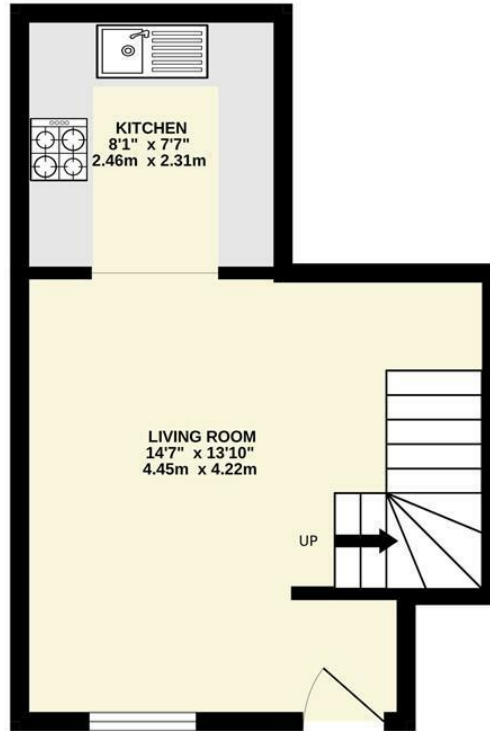
Local Authority High Peak

Council Tax A



GROUND FLOOR

1ST FLOOR



Whilst every attempt has been made to ensure the accuracy of the floorplan contained here, measurements of doors, windows, rooms and any other items are approximate and no responsibility is taken for any error, omission or mis-statement. This plan is for illustrative purposes only and should be used as such by any prospective purchaser. The services, systems and appliances shown have not been tested and no guarantee as to their operability or efficiency can be given.
Made with Metropix ©2026



These particulars are believed to be accurate but they are not guaranteed and do not form a contract. Neither Jordan Fishwick nor the vendor or lessor accept any responsibility in respect of these particulars, which are not intended to be statements or representations of fact and any intending purchaser or lessee must satisfy himself by inspection or otherwise as to the correctness of each of the statements contained in these particulars. Any floorplans on this brochure are for illustrative purposes only and are not necessarily to scale.

Offices at: Chorlton, Didsbury, Disley, Hale, Glossop, Macclesfield, Manchester Deansgate, Manchester Whitworth Street, New Mills, Sale, Wilmslow and Withington

14 Market St, Disley, Cheshire, Stockport SK12 2AA

01663 767878

disley@jordanfishwick.co.uk

www.jordanfishwick.co.uk