



The Willowcrest, Widham Gardens, Station Road
Purton

£749,995



The Willowcrest, Widham Gardens

Station Road, Purton

This exceptional five bedroom detached home is a brand new property, designed to an impressive specification throughout. Upon entering, you are greeted by a spacious hallway that leads to an elegant living room and a stunning open-plan kitchen and dining area. The luxury fitted kitchen features integrated AEG oven and induction hob, complemented by Electrolux integrated appliances, ensuring both style and practicality for family living and entertaining. LVT flooring extends through the kitchen, dining area, utility room, and bathrooms, while plush carpets add comfort to all other rooms. The principal bedroom benefits from fitted SpacePro wardrobes, providing ample storage, and all bathrooms are finished with contemporary Roca sanitaryware. Additional highlights include ultra-fast hardwired fibre broadband, an air source heat pump for efficient heating, and an electric car charging unit. The property also offers a double garage and driveway parking. Peace of mind is assured with a 10 year NHBC Buildmark Warranty and a 2 year Wain Homes Warranty.

Computer generated images and floor plans are representative and used for illustration purposes only. Dimensions shown are internal finished dimensions which may vary as each home is built individually and the precise internal finishes may not always be the same. Please be aware that window and door positions could vary due to plot orientation. These particulars are intended for guidance only and their accuracy is not guaranteed. They do not constitute a contract, part of a contract or warranty.



- | | | | |
|---|---|---|---|
| 3 Bedroom Homes | 4 Bedroom Homes | 5 Bedroom Homes | Affordable Homes |
| <ul style="list-style-type: none"> ■ The Brinkley (BRK) ■ The Woodroffe (WRO) ■ The Orchard (ORC) | <ul style="list-style-type: none"> ■ The Beckett (BEC) ■ The Entwistle (ENT) ■ The Highgate (HIG) ■ The Madocks (MAD) | <ul style="list-style-type: none"> ■ The Willowcrest (WYL) ■ The Woodroffe (WRO) | <ul style="list-style-type: none"> ■ Grand Quay Homes ■ Location of affordable homes (indicated) |
| <ul style="list-style-type: none"> ■ LEAF - Local Employment Area for Purton ■ BPS - Bus Stop ■ S/S - Substation | | | |



Hall

Lounge

12' 5" x 19' 1" (3.79m x 5.82m)

Dining / Family

20' 2" x 9' 6" (6.14m x 2.89m)

Kitchen

12' 5" x 10' 11" (3.78m x 3.33m)

Study / Snug

12' 7" x 8' 1" (3.84m x 2.46m)

Utility

6' 4" x 6' 6" (1.93m x 1.97m)

Cloakroom

5' 11" x 6' 5" (1.80m x 1.95m)

Landing

Bedroom 1

16' 1" x 10' 8" (4.91m x 3.26m)

En-suite

8' 7" x 4' 0" (2.62m x 1.21m)

Bedroom 2

12' 8" x 10' 8" (3.85m x 3.26m)

En-suite

6' 11" x 6' 5" (2.12m x 1.95m)

Bedroom 3

12' 3" x 11' 0" (3.73m x 3.35m)

Bedroom 4

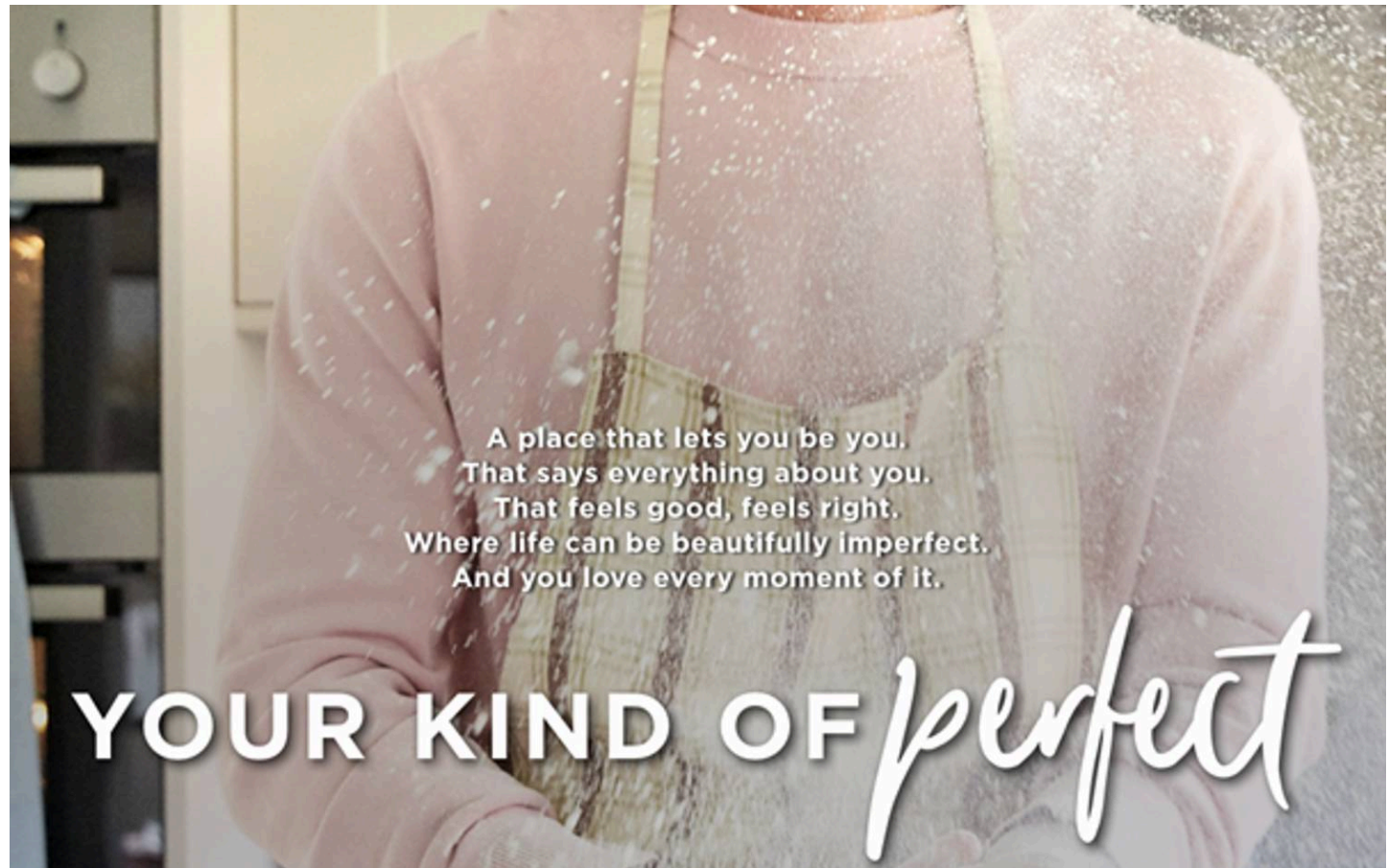
12' 5" x 7' 2" (3.79m x 2.19m)

Bedroom 5

11' 3" x 7' 2" (3.42m x 2.19m)

Bathroom

8' 9" x 7' 8" (2.67m x 2.34m)



KITCHENS

- Luxury Fitted Kitchen* with a Choice of Finishes**
- Laminated Worktops to Kitchen with Matching Upstands
- Stainless Steel AEG Single/Double Electric Oven, AEG Induction Hob and Glass Splashback***
- Electrolux Integrated Dishwasher
- Electrolux Integrated Washing Machine
- Electrolux Integrated Fridge Freezer
- 1½ Bowl Inset Stainless Steel Sink and Tap to the Kitchen
- Single Bowl Stainless Steel Sink and Tap to Utility Rooms (where applicable)
- White Downlights to Kitchen
- Plastic Cutlery Tray
- Pelmet Lighting to Kitchen

BATHROOMS

- Roca Vanity Unit to Bathroom and En-Suite 1* in a Choice of Finishes**
- Roca Gap Sanitaryware to Cloakroom and En-Suite 2 in White with Semi Pedestals and Soft Close Seats
- Roca Gap Bath
- Aqualisa Downtown Brassware
- Aqualisa Mian 2-way Mixer Shower with Ceiling Drencher and Adjustable Hose to Shower Cubicles
- Aqualisa Mian 3-Way Mixer Shower with Wall Drencher and Adjustable Hose to Baths with no Separate Shower Cubicle
- Chrome Shower Cubicles
- Bathrooms and En-Suites to be Half-Tiled throughout with a Choice** from our Tilefair Standard Range*
- Shower Cubicles to be Fully-Tiled with a Choice** from our Tilefair Standard Range*
- Half Height Tiling to all Sanitaryware Walls in Cloakroom with a Choice** from our Tilefair Standard Range*
- White Heated Towel Rail to Bathroom and En-Suites
- White Downlights to Bathrooms and En-Suites
- White Shaver Socket to Bathrooms and En-Suites

BEDROOMS

- Spacepro Fitted Wardrobes with Sliding Doors to Bedroom 1*
- Television Aerial Point to Bedroom 1
- Telephone Point to Bedroom 1
- Data Point with CAT6 Wiring to Bedroom 1

OTHER INTERNAL FEATURES

- LVT Flooring to Kitchen, Dining, Utility, Bathrooms, En-Suites and Cloakrooms in a Choice of Finishes**
- Carpets from our Standard Range to all Other Areas in a Choice of Finishes**
- All Walls and Ceilings to have Covermatt Emulsion Finish
- Staircase, including Newel Posts and Spindles, to be Finished in White
- Oak Handrail and Newel Caps
- Contemporary 5-Panel Oak Doors with Chrome Effect Door Furniture
- Ultrafast Hard Wired Fibre Broadband†
- CAT6 Cabling to Lounge and Bedroom 1
- Slimline White Sockets and Switches to all Rooms
- Hard Wired Smoke Detectors with Battery Backup
- White USB sockets to Kitchen, Lounge, Family Room and all Bedrooms
- System 3 Ventilation System

EXTERNAL FEATURES

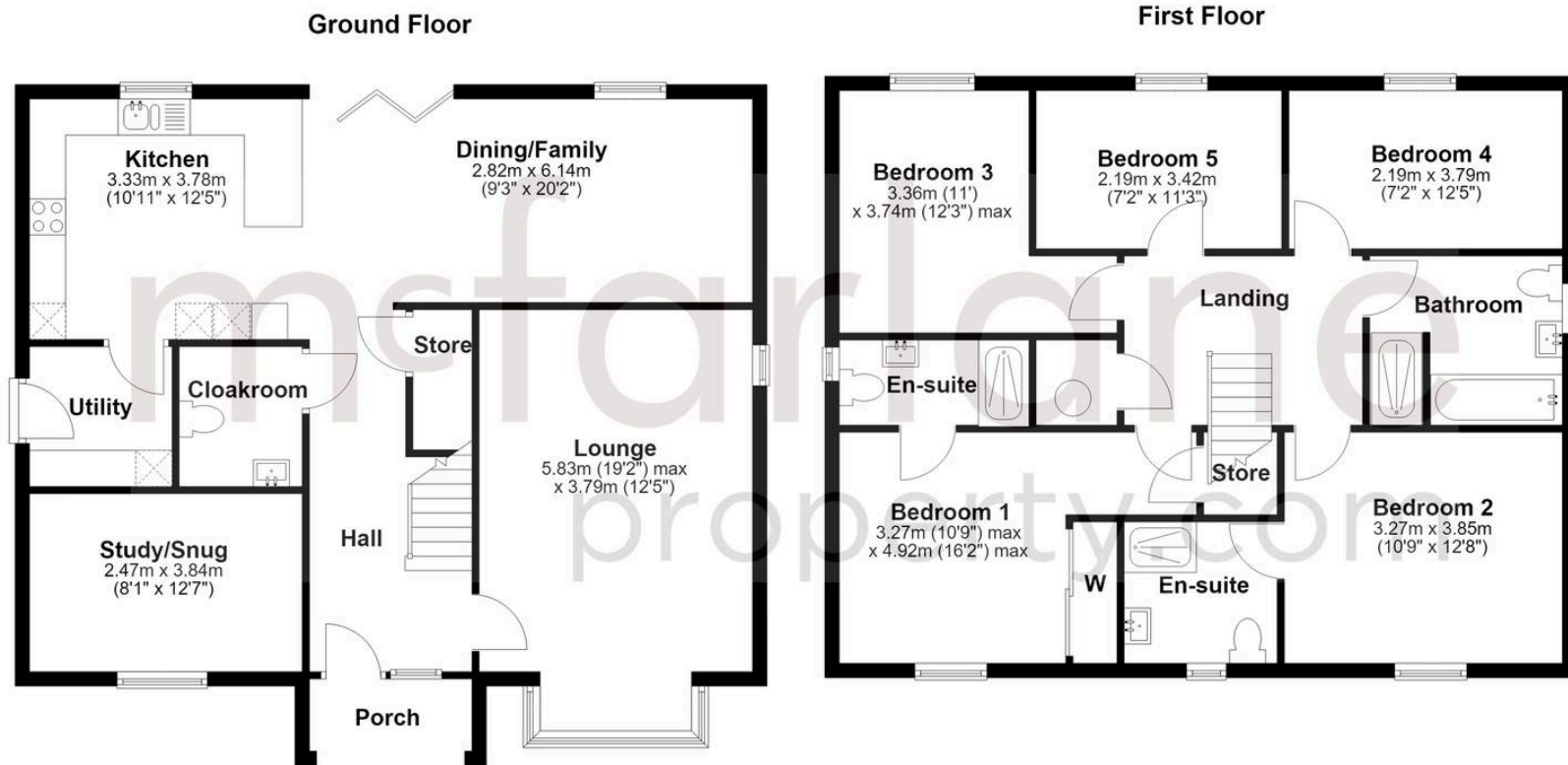
- PVCu Grey Double Glazed Windows, French Doors and Rear Doors
- Black Rainwater Goods
- External PIR Lights to Front and Rear
- External Tap
- Power and Lighting to all Integral and Detached Garages (where applicable)
- Gardens Landscaped to Front
- Gardens Turfed to Rear
- Electric Car Charging Unit
- 1.8m Close Boarded Divisional Fencing to Rear Garden*

HEATING

- Air Source Heat Pump
- Honeywell Smart Thermostat

WARRANTIES

- 10-Year NHBC Buildmark Warranty
- 2-Year Wain Homes Warranty



McFarlane Sales & Lettings

Cricklade Sales 36 High Street, Cricklade - SN6 6AY

01793 751044 • cricklade@mcfarlaneproperty.com • www.mcfarlaneproperty.com/