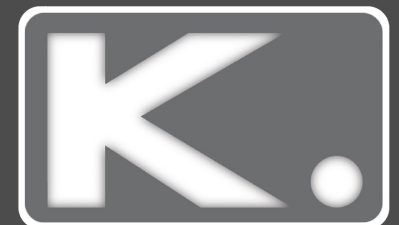
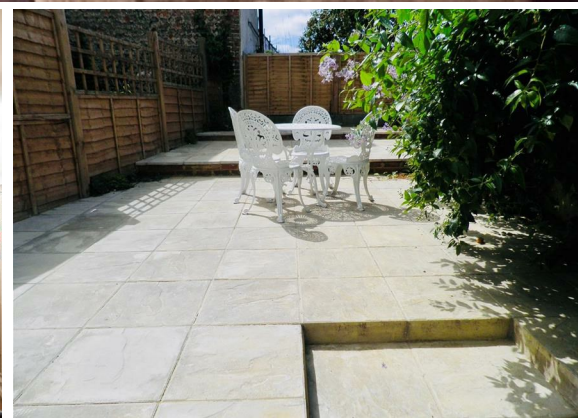
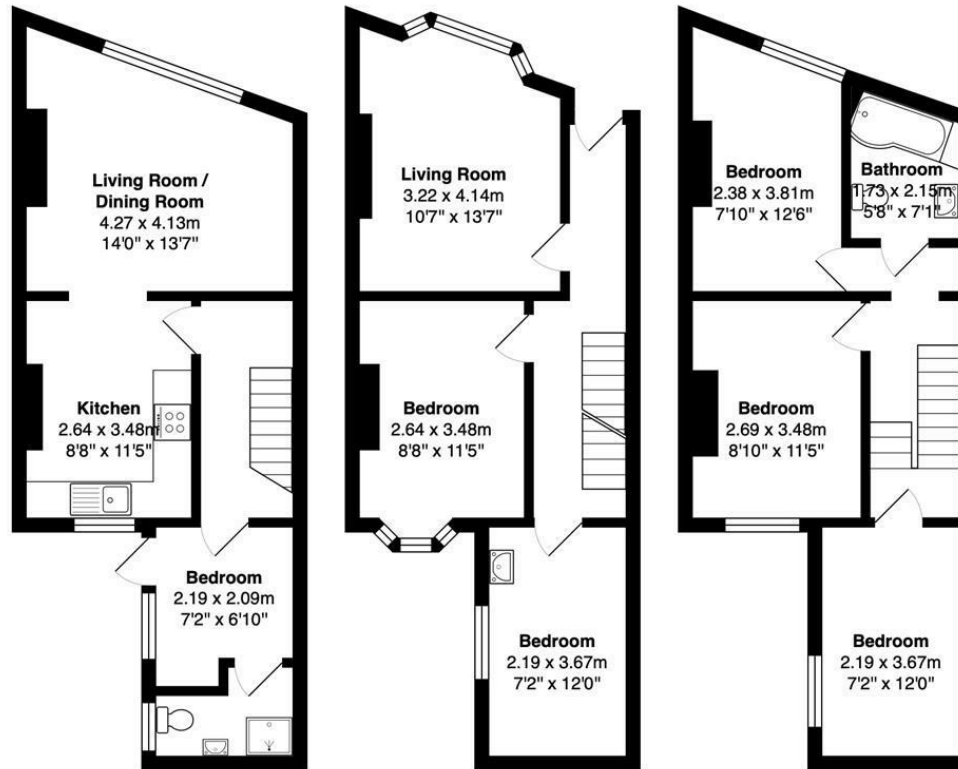




**6 Bed
House - Terraced
located in Brighton**

£3,900 PCM





Lower Ground Floor
 Area: 38.7 m² ... 417 ft²

Ground Floor
 Area: 39.4 m² ... 424 ft²

First Floor
 Area: 38.7 m² ... 416 ft²

Total Area: 116.8 m² ... 1257 ft²

All measurements are approximate and for display purposes only.

DIRECTIONS

CONTACT

Kendrick Property Services - Brighton
 10-12 Lewes Road
 Brighton
 East Sussex
 BN2 3HP

E:
lettings@kendrickpropertyservices.co.uk
 T: 01273 699600
www.kendrickpropertyservices.co.uk

