

Cromwell Road, Eccles

Manchester



Offers Over £230,000

# Cromwell Road

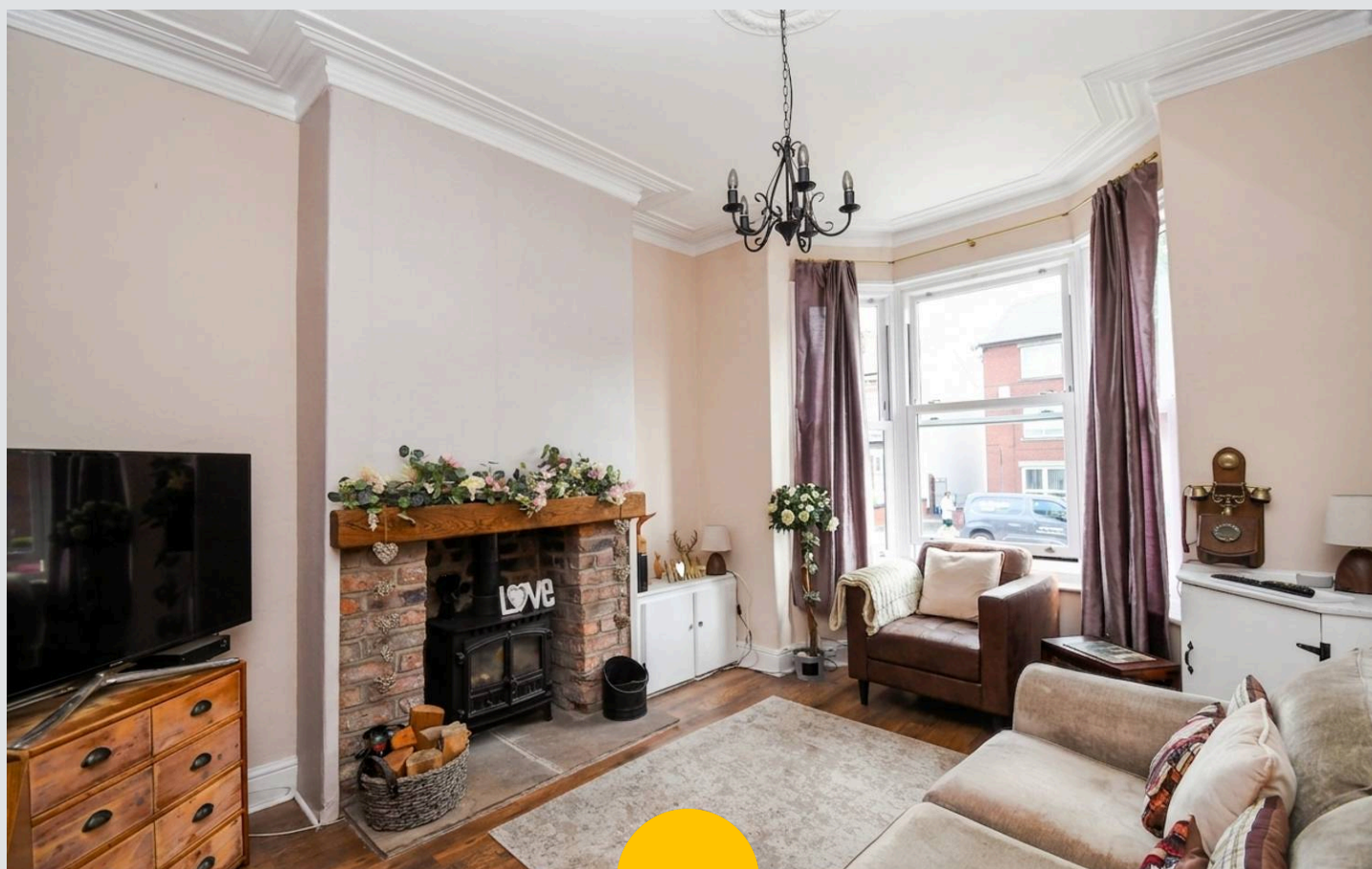
Eccles, Manchester

Charming two-bed mid-terrace near Monton Village, with two receptions, fitted kitchen, loft room, stylish bathroom, off-road parking, and excellent transport links. Ideal for first-time buyers.

Council Tax band: A

Tenure: Freehold

- Well Presented Two Bedroom Terrace Property
- Located just a Short Walk to Monton Village and Eccles Centre
- Two Reception Rooms, Lounge with Log Burner and Sash Windows
- Spacious Fitted Kitchen
- Two Double Bedrooms and a Loft Room
- Three Piece Fitted Bathroom Suite
- Low Maintenance garden to the Rear with Lawn and Porcelain Tiled Patio
- Off Road Parking to the Front
- Perfect First Time Buy Close to Excellent Amenities and Brilliant Transport Links



HILLS



**Entrance Hallway**

**Lounge**

14' 1" x 10' 5" (4.29m x 3.18m)

**Dining Room**

14' 4" x 11' 7" (4.37m x 3.53m)

**Kitchen**

15' 2" x 7' 2" (4.62m x 2.18m)

**Landing**

**Bedroom One**

14' 8" x 11' 5" (4.47m x 3.48m)

**Bedroom Two**

12' 4" x 9' 7" (3.76m x 2.92m)

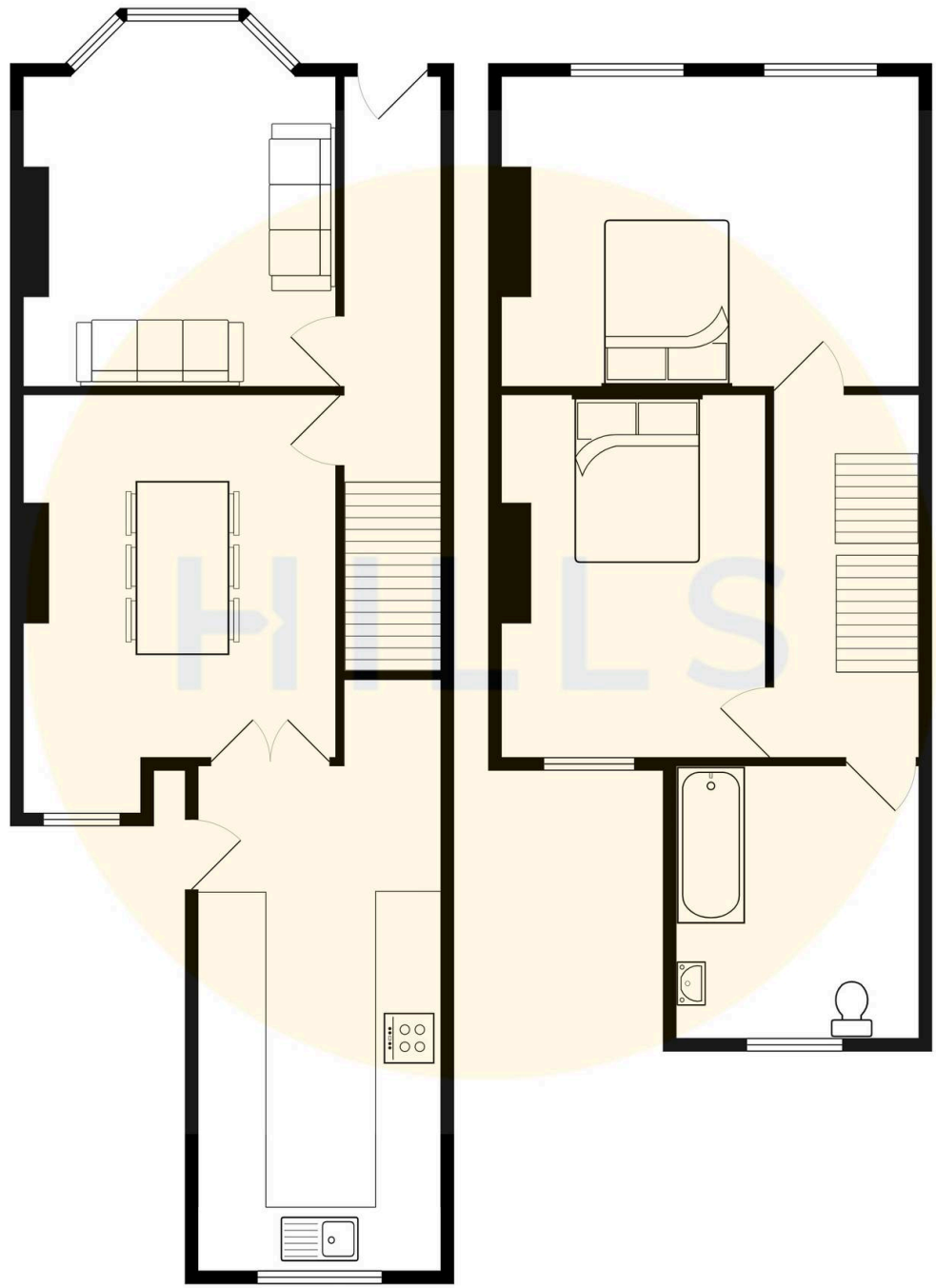
**Bathroom**

8' 8" x 7' 2" (2.64m x 2.18m)

**Loft Room**

13' 2" x 7' 7" (4.01m x 2.31m)







## Hills | Salfords Estate Agent

Hills Residential, Sentinel House Albert Street – M30 0SS

0161 707 4900

[sales@hills.agency](mailto:sales@hills.agency)

[www.hills.agency/](http://www.hills.agency/)



By law, we are required to conduct anti-money laundering checks on all potential buyers and sellers. In line with HMRC guidelines, our trusted partner, Coadjute, will securely manage these checks on our behalf. A non-refundable fee of £45 + VAT per person will apply, and Coadjute will handle the payment. Once an offer is accepted, Coadjute will send a secure link for you to complete the biometric checks. These checks must be completed before we can send the memorandum of sale to all parties. PLEASE NOTE: The Agent has not tested any equipment, fixtures, fittings or services so cannot verify that they are in working order or fit for the purpose. References to the properties tenure are based on information supplied by the seller. You are advised to check the availability of this property before travelling any distance to view. Every effort has been made to ensure these particulars are correct and not misleading but their accuracy is not guaranteed nor do they form part of any contract.