



6 Blossom Walk, Hailsham, BN27 1TT

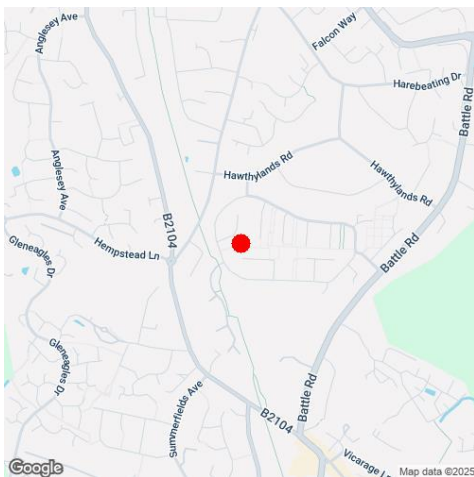
Price £275,000 | Freehold

LS Leaper
Stanbrook

TOWN CENTRE OFFICE
01323 416716

MEADS STREET OFFICE
01323 737962

Available with no onward chain- A well proportioned three bedroom detached bungalow in a quiet pedestrianised section of Blossom Walk in the Harmers Hay area of North Hailsham approximately 1 mile from Hailsham High Street. Although requiring some modernisation and redecoration, the bungalow benefits from gas central heating, sealed unit double glazing with a garage in a nearby block. The accommodation comprises a generous living room with patio doors opening onto the rear garden. The kitchen has a range of matching wall and base units with an integrated oven and hob, whilst there is a bathroom with white suite and separate wc. The gardens are principally laid to lawn to front and rear the latter extending to approximately 30'.





At a Glance:

- Favoured Harmers Hay development in North Hailsham
- Three generous bedrooms
- Manageable size garden
- Garage
- Gas central heating
- Sealed unit double glazing
- No onward chain

Accommodation:

PORCH

HALL

LIVING ROOM

17'0" (5.18m) x 13'3" (4.04m)

KITCHEN

10'0" (3.05m) x 9'0" (2.74m)

BEDROOM 1

13'2" (4.01m) x 11'0" (3.35m)

BEDROOM 2

12'6" (3.81m) x 9'0" (2.74m)

BEDROOM 3

11'2" (3.4m) x 9'0" (2.74m)

BATHROOM/WC

SEPARATE WC

OUTSIDE:

GARAGE

No. 6 in nearby block.

GARDENS FRONT & REAR

COUNCIL TAX:

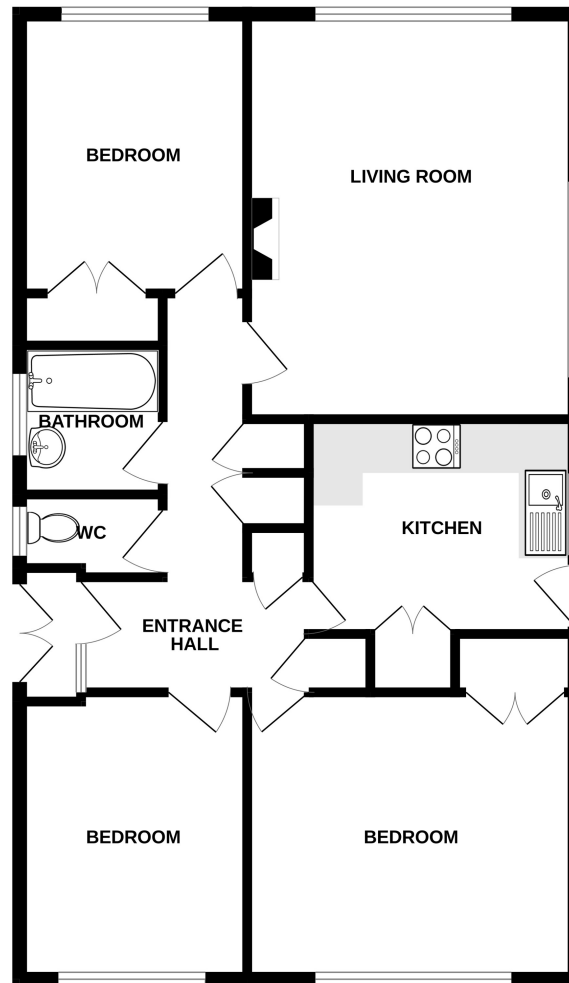
Band 'C'

EPC:

'D'



GROUND FLOOR



Whilst every attempt has been made to ensure the accuracy of the floorplan contained here, measurements of doors, windows, rooms and any other items are approximate and no responsibility is taken for any error, omission or mis-statement. This plan is for illustrative purposes only and should be used as such by any prospective purchaser. The services, systems and appliances shown have not been tested and no guarantee as to their operability or efficiency can be given.
Made with Metropix ©2025

Ref: 1

Whilst every care has been taken in the preparation of these particulars, neither the agents nor the vendor accept any responsibility for error or omission, nor do they constitute an offer or contract. Please note we have not tested any apparatus, fixtures, fittings, or services. Interested parties must undertake their own investigation into the working order of these items. All measurements are approximate whilst photographs and floorplans are provided for guidance only.

LS Leaper
Stanbrook

5 Gildredge Road, Eastbourne BN21 4RB
01323 416716

28 Meads Street, Eastbourne BN20 7QY
01323 737962

website
www.leaperstanbrook.co.uk

email
sales@leaperstanbrook.co.uk



6 Blossom Walk, Hailsham, BN27 1TT

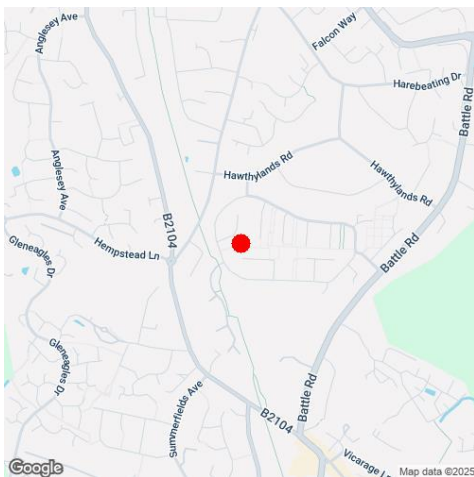
Price £275,000 | Freehold

LS Leaper
Stanbrook

TOWN CENTRE OFFICE
01323 416716

MEADS STREET OFFICE
01323 737962

Available with no onward chain- A well proportioned three bedroom detached bungalow in a quiet pedestrianised section of Blossom Walk in the Harmers Hay area of North Hailsham approximately 1 mile from Hailsham High Street. Although requiring some modernisation and redecoration, the bungalow benefits from gas central heating, sealed unit double glazing with a garage in a nearby block. The accommodation comprises a generous living room with patio doors opening onto the rear garden. The kitchen has a range of matching wall and base units with an integrated oven and hob, whilst there is a bathroom with white suite and separate wc. The gardens are principally laid to lawn to front and rear the latter extending to approximately 30'.





At a Glance:

- Favoured Harmers Hay development in North Hailsham
- Three generous bedrooms
- Manageable size garden
- Garage
- Gas central heating
- Sealed unit double glazing
- No onward chain

Accommodation:

PORCH

HALL

LIVING ROOM

17'0" (5.18m) x 13'3" (4.04m)

KITCHEN

10'0" (3.05m) x 9'0" (2.74m)

BEDROOM 1

13'2" (4.01m) x 11'0" (3.35m)

BEDROOM 2

12'6" (3.81m) x 9'0" (2.74m)

BEDROOM 3

11'2" (3.4m) x 9'0" (2.74m)

BATHROOM/WC

SEPARATE WC

OUTSIDE:

GARAGE

No. 6 in nearby block.

GARDENS FRONT & REAR

COUNCIL TAX:

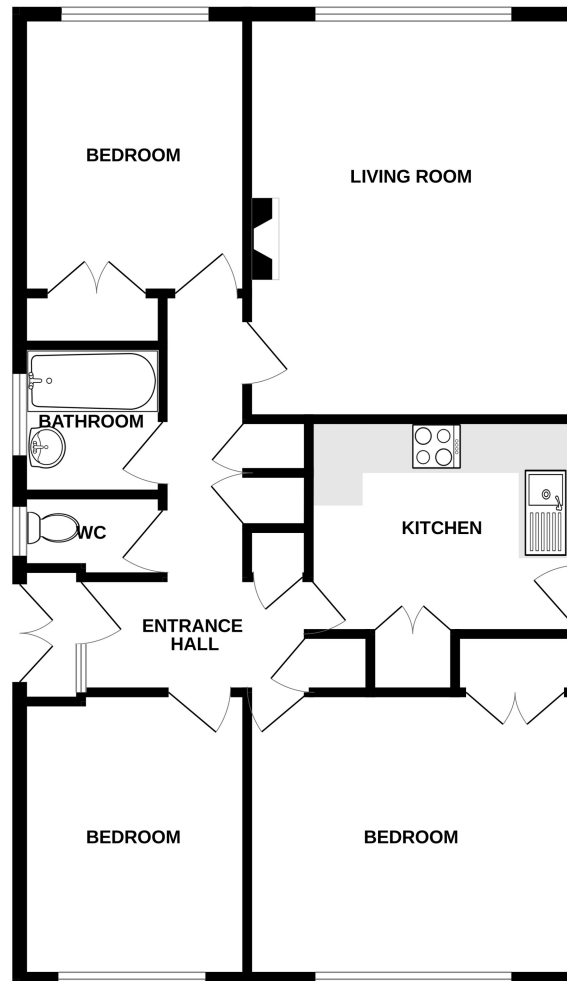
Band 'C'

EPC:

'D'



GROUND FLOOR



Whilst every attempt has been made to ensure the accuracy of the floorplan contained here, measurements of doors, windows, rooms and any other items are approximate and no responsibility is taken for any error, omission or mis-statement. This plan is for illustrative purposes only and should be used as such by any prospective purchaser. The services, systems and appliances shown have not been tested and no guarantee as to their operability or efficiency can be given.
Made with Metropix ©2025

Ref: 1

Whilst every care has been taken in the preparation of these particulars, neither the agents nor the vendor accept any responsibility for error or omission, nor do they constitute an offer or contract. Please note we have not tested any apparatus, fixtures, fittings, or services. Interested parties must undertake their own investigation into the working order of these items. All measurements are approximate whilst photographs and floorplans are provided for guidance only.

LS **Leaper
Stanbrook**

5 Gildredge Road, Eastbourne BN21 4RB
01323 416716

28 Meads Street, Eastbourne BN20 7QY
01323 737962

www.leaperstanbrook.co.uk website

sales@leaperstanbrook.co.uk email