

Maida Vale, W9

£485,000

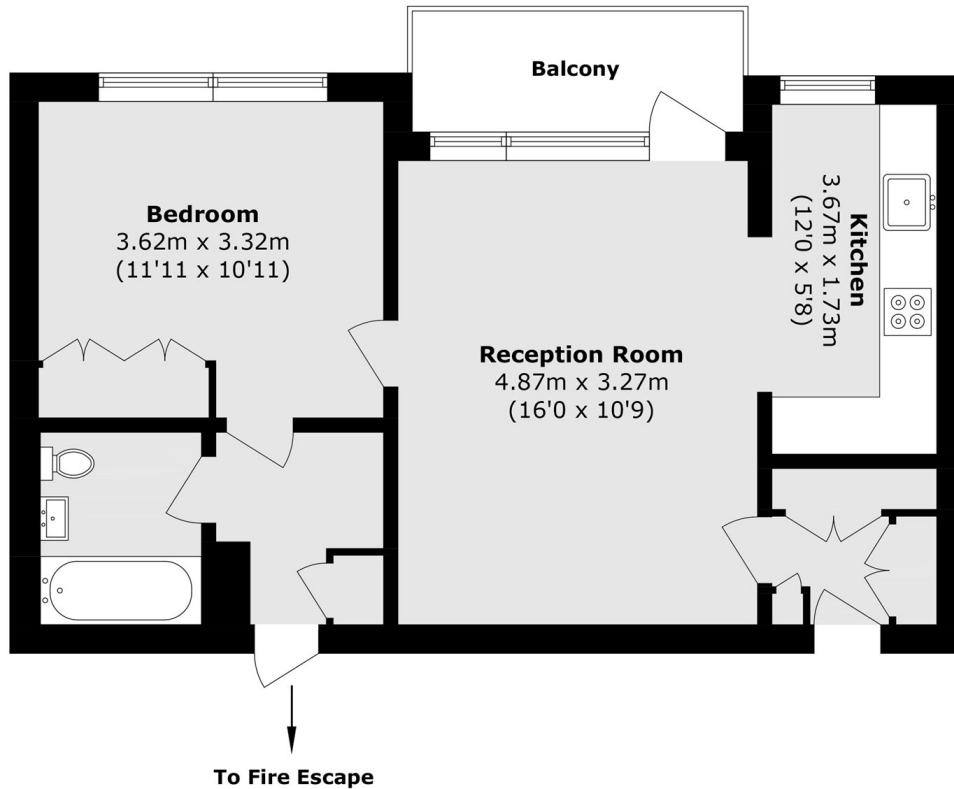
A well-presented, modern first-floor flat in a purpose-built block, featuring a generous double bedroom with built-in storage, a spacious reception room opening out onto a balcony and a separate kitchen.

Apartments within Stuart Tower are highly regarded for their generous storage, 24-hour porter service, passenger lifts, and welcoming lobby. The building is conveniently located approximately 0.35 miles from Warwick Avenue Underground Station (Bakerloo Line) and just 0.2 miles from the shops, cafés, and restaurants of Clifton Road. St John's Wood (Jubilee Line, including Night Tube services) and Paddington Station (Elizabeth Line) are also within walking distance, along with the open green spaces of Regent's Park.

Features

- 24-Hour Porter Service & Lift
- First Floor Flat
- Private Balcony
- Ample Storage
- Chain Free
- Great Transport Links

Maida Vale, Maida Vale, W9



First Floor

Total area (approx.): 49.1 sq. m (528.5 sq. ft)
Balcony area (approx.): 4.4 sq. m (47.3 sq. ft)