



## WARWICK GARDENS, W14

£1,350,000

Two Bedrooms  
Two Bathrooms & Guest WC  
Top floor With Lift  
Porter  
Air Conditioning Throughout  
Communal Garden

@marshandparsons  
marshandparsons.co.uk

MARSH &  
PARSONS



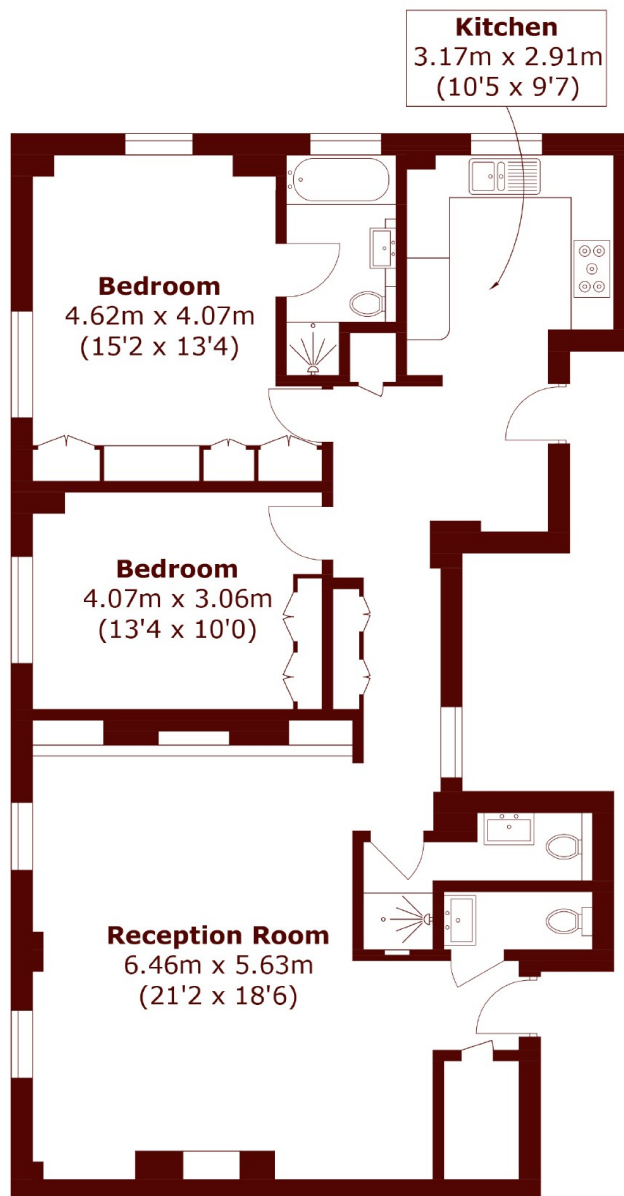
# ABOUT THE PROPERTY

A stunning two bedroom top floor apartment (with a lift) with uninterrupted views of London.

St Mary Abbots Court is a popular portered block in Kensington, just a short walk from the shops, restaurants, bars and amenities of Kensington High Street together with its Underground station (District and Circle line) as well as Kensington Olympia (District and Overground) and Earls Court (District and Piccadilly lines). The open green spaces of Holland Park, Kensington Gardens and Hyde Park are close at hand whilst access westwards towards Heathrow is easily made via the A4/M4.



# STEP INSIDE WARWICK GARDENS



## Sixth Floor

Total area (approx.): 100.9 sq. m (1086.0 sq. ft)

**Kensington**  
020 7368 4450

Energy Rating: E We aim to make our particulars both accurate and reliable. However, they are not guaranteed; nor do they form part of an offer or contract. If you require clarification on any points then please contact us, especially if you're traveling some distance to view. Please note that appliances and heating systems have not been tested and therefore no warranties can be given as to their good working order

**MARSH &  
PARSONS**