



ABSOLUTE

Flat 8, Sonny Rae Mews Thurlow Road, Torquay – TQ1 3GJ
£325,000





Flat 8

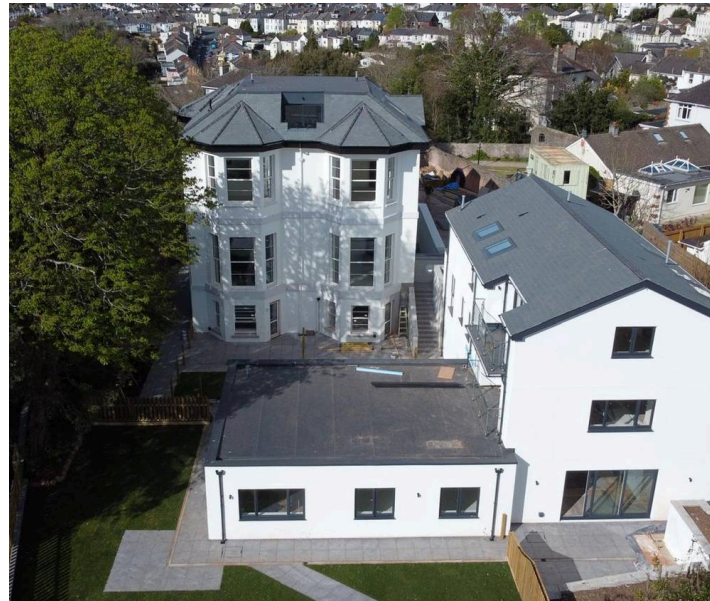
Sonny Rae Mews Thurlow Road, Torquay

Absolute Wellswood are proud to introduce Apartment 8 at Sunny Rae Villa, an exceptional new build 2 bedroom bungalow style apartment by the award-winning, family-owned builders McCarthy Homes...

Council Tax band: TBD

Tenure: Leasehold

- Exclusive new development of 11 apartments by award-winning McCarthy Homes
- New Build bungalow with large private outside space
- Large private garden with sea views
- Allocated parking, cycle storage and dedicated recycling area
- Open plan lounge/kitchen/diner
- Separate utility room
- Two generous bedrooms
- Luxury family bathroom
- Exceptional finish throughout
- Eco friendly with air heat source pump and under floor heating



Flat 8

Sonny Rae Mews Thurlow Road, Torquay

Thurlow Road is an elevated residential address in Torquay, positioned between the sought-after area of Wellswood and the town centre. The tree lined road enjoys a quiet tucked away setting while benefiting from sea views across Tor Bay from various vantage points. The location combines convenience with lifestyle appeal, offering straightforward access to local schools, transport links and the wider English Riviera, making it ideal for both permanent residence and a secure coastal retreat. Torquay Harbour and the marina are nearby, offering waterside dining and leisure facilities. Well regarded schools are close by including Ilsham C of E Primary School and Torquay Boys' and Girls' Grammar Schools. Regular bus services connect across Torbay, with Torquay train station providing mainline links to Exeter, Bristol and London Paddington. The A380 South Devon Highway offers direct road access to Exeter and the M5 beyond.

Absolute Sales & Lettings

Absolute Sales & Lettings Ltd, 13 Ilsham Road - TQ1 2JG

01803 214214

torquay@movewithabsolute.co.uk

movewithabsolute.co.uk/





Approximate total area⁽¹⁾

73.1 m²

786 ft²

(1) Excluding balconies and terraces

