



Naunton Crescent, Cheltenham

£525,000 Freehold

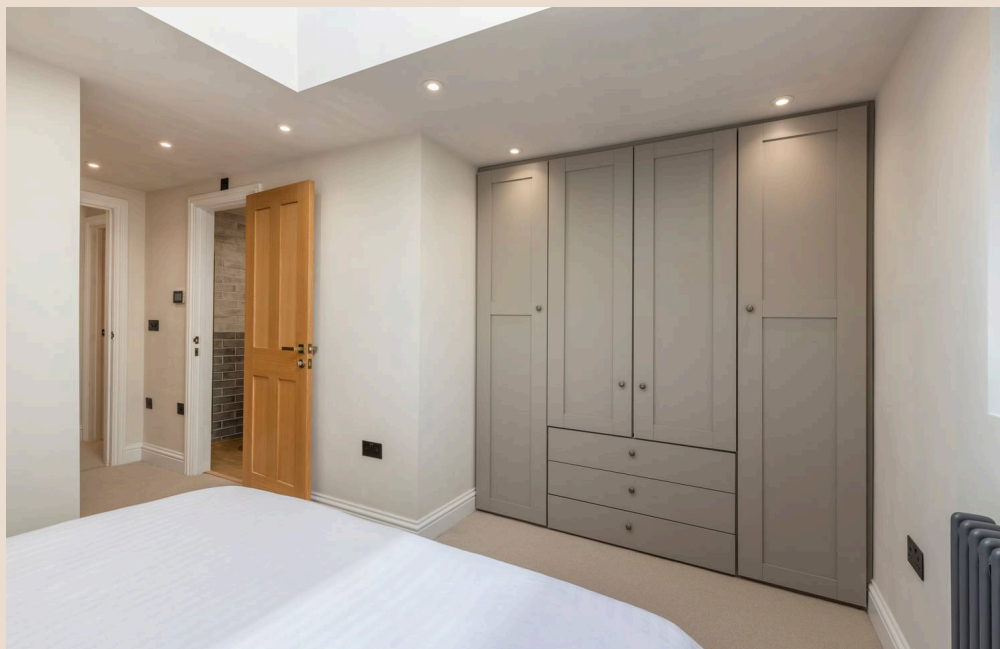
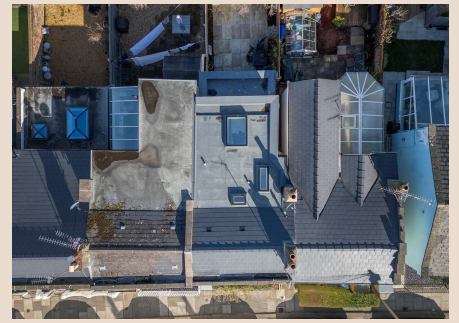
Renovated three-bedroom home with period features, Italian kitchen, double-storey extension, en-suite, garden, utility, and off Naunton Park Primary catchment. Close to park and local amenities.



Situated along the ever-popular Naunton Crescent, this property occupies a superb position within one of Cheltenham's most sought-after residential neighbourhoods. The crescent enjoys a wonderful sense of community and leads directly to the open green spaces of Naunton Park at the top of the road, providing an ideal setting for families, dog walkers and those who enjoy outdoor space close to home. The property is also within easy walking distance of the highly regarded Naunton Park Primary School, making the area particularly attractive to families. Just a short stroll away lies the vibrant Bath Road, well known for its excellent range of independent cafés, restaurants, bakeries and everyday shops, creating a lively village-style atmosphere. In addition, the property sits close to the grounds of Cheltenham College and its sporting facilities, while Cheltenham's town centre – famed for its Regency architecture, boutique shopping and cultural festivals – is easily accessible.

Council Tax band: C

Tenure: Freehold



- Three double bedrooms
- Bespoke Italian kitchen
- Crittall doors opening into low maintenance garden
- Principle bedroom with skylight, en-suite & fitted wardrobes
- Breakfast bar, high quality integrated appliances, sophisticated finish throughout
- Completely renovated top to bottom with double storey extension to rear
- Downstairs W.C. with small utility space
- Period features such as original fireplaces
- Catchment for Naunton Park



Naunton Crescent

Approximate Gross Internal Area
Ground Level = 52.4 sq m / 564 sq ft
First Level = 46.1 sq m / 496 sq ft
Total = 98.5 sq m / 1060 sq ft



Illustration for identification purposes only, measurements are approximate, not to scale.