



Stayers Road, Bessacarr, DN4

£280,000



Bedrooms: 4

Bathrooms: 3

Arranged over three floors, this well-presented home offers flexible living ideal for modern family life. With four bedrooms and three bathrooms, there is plenty of space for everyday living as well as quieter areas to relax.

The kitchen sits at the heart of the home, opening into the dining area to create a bright and sociable space for meals and entertaining, with direct access to the rear garden. A separate utility room adds extra storage and keeps laundry neatly tucked away.

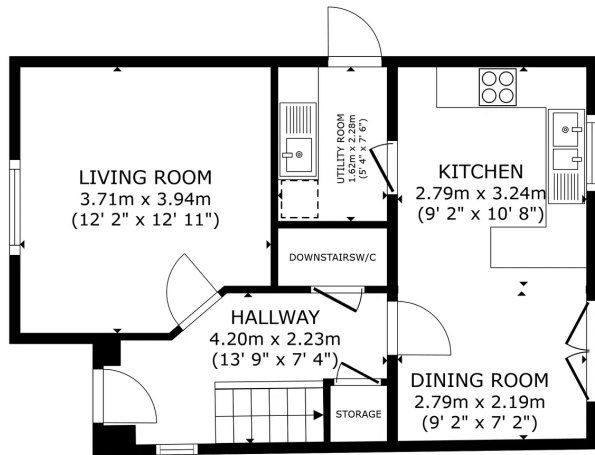
The main living room is a comfortable, well-proportioned space filled with natural light. Bedrooms are arranged across the upper floors, including a master bedroom with fitted wardrobes and an en-suite, while the top floor offers a versatile room suitable as a bedroom, guest space or home office.

Outside, the private rear garden is mainly laid to lawn, providing a secure and manageable outdoor space. To the front, a driveway leads to a detached garage, offering off-road parking and additional storage.

Overall, the home combines space, practicality and a flexible layout, making it an excellent choice for modern family living.

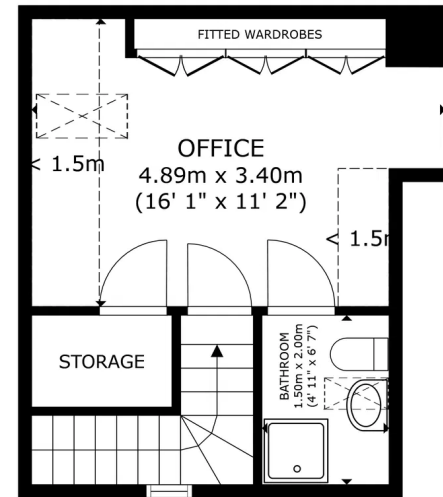
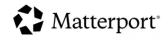






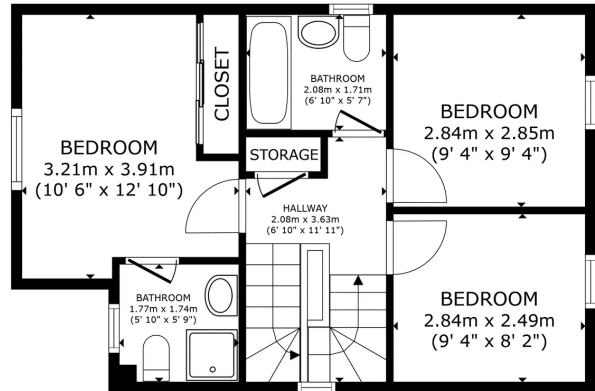
FLOOR 1

GROSS INTERNAL AREA
 FLOOR 1 44.5 m² (479 sq.ft.) FLOOR 2 43.1 m² (464 sq.ft.) FLOOR 3 20.8 m² (223 sq.ft.)
 EXCLUDED AREAS - REDUCED HEADROOM 3.7 m² (40 sq.ft.)
 TOTAL : 108.3 m² (1,166 sq.ft.)
 SIZES AND DIMENSIONS ARE APPROXIMATE, ACTUAL MAY VARY.



FLOOR 3

GROSS INTERNAL AREA
 FLOOR 1 44.5 m² (479 sq.ft.) FLOOR 2 43.1 m² (464 sq.ft.) FLOOR 3 20.8 m² (223 sq.ft.)
 EXCLUDED AREAS - REDUCED HEADROOM 3.7 m² (40 sq.ft.)
 TOTAL : 108.3 m² (1,166 sq.ft.)
 SIZES AND DIMENSIONS ARE APPROXIMATE, ACTUAL MAY VARY.



FLOOR 2

GROSS INTERNAL AREA
 FLOOR 1 44.5 m² (479 sq.ft.) FLOOR 2 43.1 m² (464 sq.ft.) FLOOR 3 20.8 m² (223 sq.ft.)
 EXCLUDED AREAS - REDUCED HEADROOM 3.7 m² (40 sq.ft.)
 TOTAL : 108.3 m² (1,166 sq.ft.)
 SIZES AND DIMENSIONS ARE APPROXIMATE, ACTUAL MAY VARY.

