



Prince Albert Road, NW8

£2,650 Per calendar month

A bright one double bedroom apartment on the third floor of a 24 hour portered block opposite Regent's Park. Spacious reception room with wood floors, open plan kitchen, double bedroom with built in wardrobes and balcony and bathroom with shower over bath. Communal heating and hot water included.

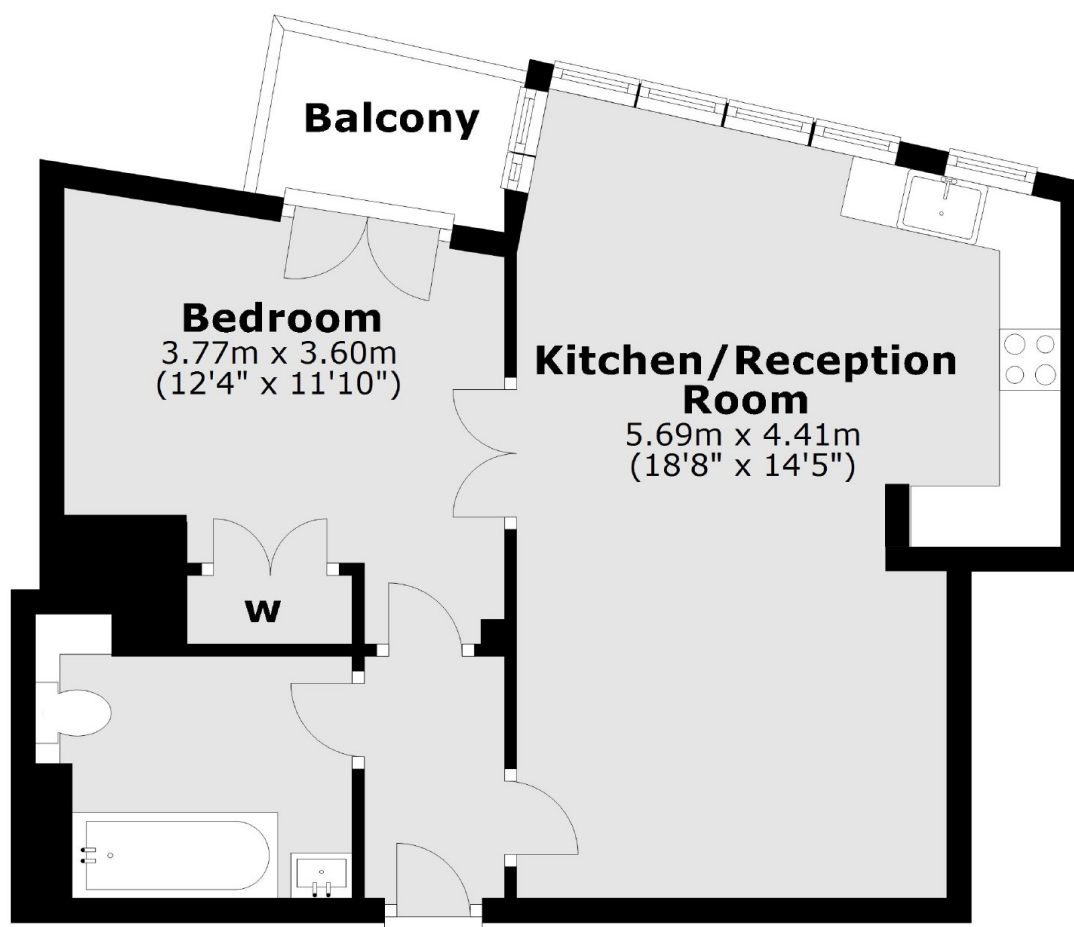
Oslo Court is located opposite Regent's Park and close to Primrose Hill and St John's Wood High Street.

Features

- One Double Bedroom
- Third Floor
- 24 Hour Porter
- Wood Floors
- Communal Heating and Hot Water Included
- Balcony

Prince Albert Road,
London, NW8

Third Floor



Total area: approx. 45.6 sq. metres (491.2 sq. feet)