



## Royal Wharf Walk, E16

£3,500 Per calendar month

An attractive three-bedroom apartment set within the highly desirable Riverscape development at Royal Wharf. Offered furnished, this stylish home features a high-specification integrated kitchen with island and winter garden, a spacious open-plan living and dining area, three well-proportioned bedrooms with built-in wardrobes, and beautifully appointed contemporary bathrooms. Finished to an excellent standard throughout, the apartment combines modern design with comfort and practicality.

Residents enjoy exceptional amenities, including a swimming pool, spa facilities, state-of-the-art gym, landscaped gardens, riverside walks, concierge services, 24-hour security, and the exclusive Sky Lounge. Ideally located between Pontoon Dock DLR and Custom House Elizabeth Line, with easy connections to the Canning Town Jubilee service.

### Features

- Riverscape Development
- Three Double Bedrooms
- Two Bathrooms
- Direct River Views
- Over 1,100sqft Internally
- On-Site Facilities

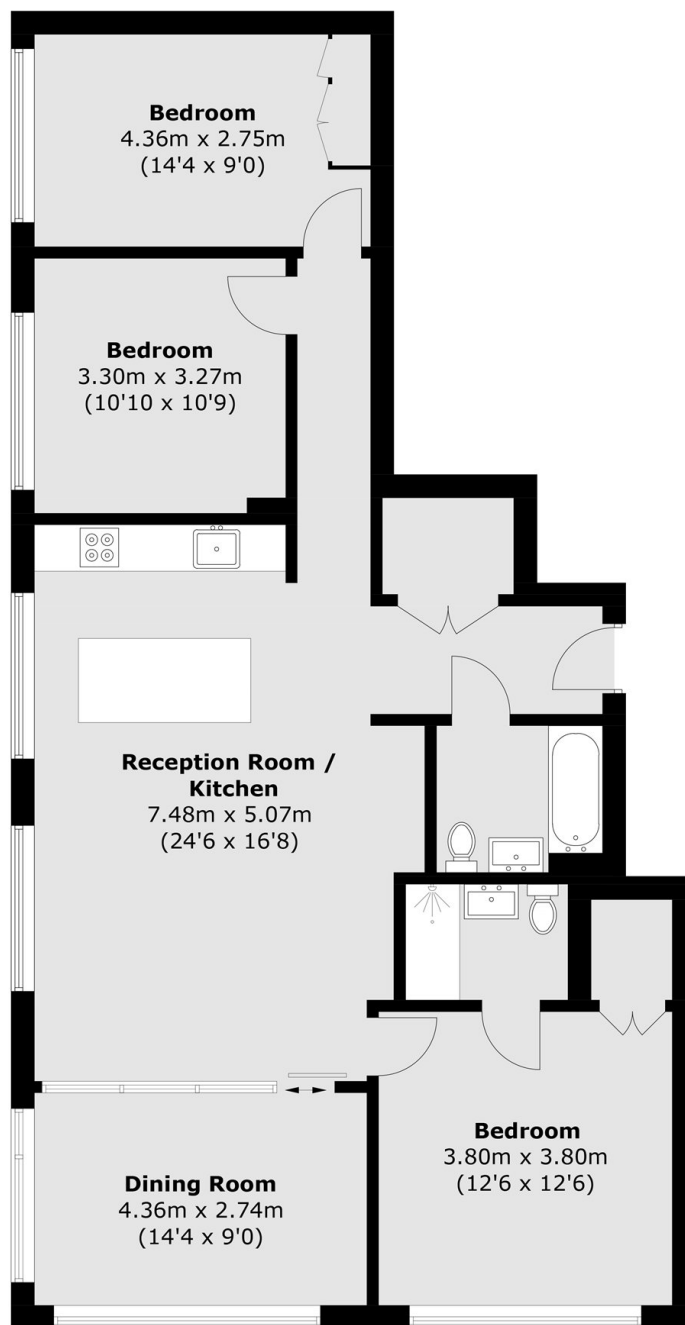


## Royal Wharf Walk, E16

Disclaimer: Images shown are of a similar apartment within the same building and are for illustrative purposes only.



# Royal Wharf Walk, London, E16



Total area (approx.): 106.1 sq. m (1142.0 sq. ft)