



[www.jeffreygross.co.uk](http://www.jeffreygross.co.uk)

CARDIFF

VALE

CAERPHILLY

BRISTOL

*Bronrhiw Fach*

CAERPHILLY



Comments by Mr Ollie Vincent



**Property Specialist**

**Mr Ollie Vincent**

Senior valuer

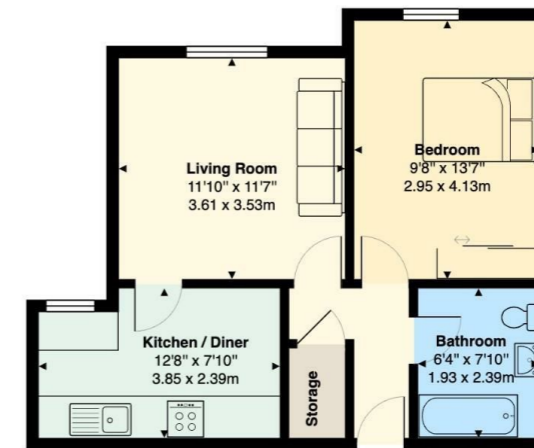
ollie.vincent@jeffreycross.co.uk



*One-Bedroom Retirement Apartment – Bronrhiw Fach, Caerphilly*

*Nestled in the heart of Caerphilly, this well-presented one-bedroom first-floor retirement apartment offers a superb opportunity for those seeking a peaceful yet well-connected home. Situated in a well-maintained building with lift access, this flat is ideal for those looking for ease and comfort.*

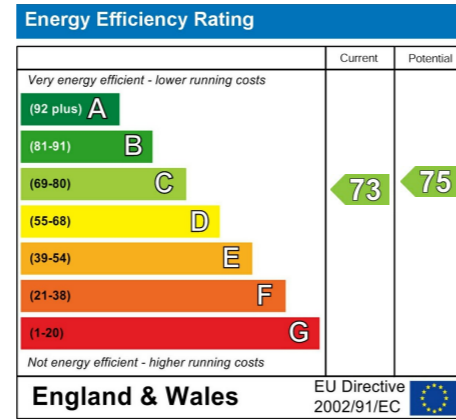
Comments by the Homeowner



**Bronrhiw Fach, Caerphilly, CF83 1HY**

Total Area: 485 ft<sup>2</sup> ... 45.1 m<sup>2</sup>

All measurements are approximate and for display purposes only



# Bronrhiw Fach

Caerphilly, Caerphilly, CF83 1HY

Asking Price

£120,000



1 Bedroom(s)



1 Bathroom(s)



485.00 sq ft



Contact our  
**Brinsons Caerphilly Branch**

029 20867711

One-Bedroom Retirement Apartment – Bronrhiw Fach, Caerphilly

Nestled in the heart of Caerphilly, this well-presented one-bedroom first-floor retirement apartment offers a superb opportunity for those seeking a peaceful yet well-connected home. Situated in a well-maintained building with lift access, this flat is ideal for those looking for ease and comfort.

The property comprises a welcoming reception room, a tranquil double bedroom, a functional bathroom, and a modern kitchen. With no onward chain, it's ready for immediate occupancy.

Perfectly located just a short walk from Caerphilly town centre, residents will benefit from close proximity to local shops, cafes, and excellent transport links — all within a vibrant, community-focused setting.

Key Features

- One-bedroom first-floor retirement apartment
- Lift access for easy mobility
- Spacious reception room and double bedroom
- Well-appointed bathroom
- Located in Caerphilly town centre
- No onward chain – ready to move in
- 99 years remaining on the lease
- Allocated parking space included
- Managed by Wales & West Housing
- Monthly service charge: £232.16
- Ideal for downsizers or those seeking low-maintenance living

LEASEHOLD  
EPC - C  
Council Tax - B



Entrance Hall

Living Room 11'10" x 11'6" (3.61 x 3.53)

Kitchen / Diner 12'7" x 7'10" (3.85 x 2.39)

Bedroom 9'8" x 13'6" (2.95 x 4.13)

Bathroom 6'3" x 7'10" (1.93 x 2.39)

Council Tax

Band - B

Additional Information

The development is for over 55 only.  
Parking is available  
No chain

Tenure

We are advised by our client that the property is Leasehold, this is to be confirmed by your legal advisor.

Lease details

We are advised by our client that there are approx 99 years remaining. This is to be confirmed by your legal advisor.

School Catchment

Just in case..

Welsh Medium Primary School : Y.G.G. CAERFFILI  
Welsh Medium Secondary School : Y GWYNIDY - YSGOL GYFUN CWM RHYMNI  
English Medium Primary School : THE TWYN SCHOOL  
English Medium Secondary School : ST. MARTINS COMPREHENSIVE SCHOOL

CARDIFF VALE CAERPHILLY BRISTOL

[www.jeffreygross.co.uk](http://www.jeffreygross.co.uk)

