



106 Overstrand Road, Kings Chalet Park - NR27 0DJ

£50,000 Leasehold

- Holiday chalet • Leasehold • 2 bedrooms • Open-plan living space • Close to the beach & town centre • Near Royal Cromer Golf Club • Well-maintained chalet park • Holiday let potential • Communal gardens & parking

henleys
ESTATE AGENCY SIMPLIFIED

01263 511111
cromer@henleyshomes.co.uk

ESTATE AGENCY SIMPLIFIED

Located on the well-regarded Kings Chalet Park, this 2 bedroom holiday chalet offers a practical coastal retreat within easy reach of Cromer's beach, town centre and cliff-top walks.

Positioned close to Royal Cromer Golf Club and Happy Valley woodland walks, the property would suit buyers looking for a holiday base or investment opportunity with holiday let potential.

The accommodation includes an open-plan lounge, kitchen and dining space, creating a sociable main living area, along with 2 bedrooms and a bathroom fitted with a shower over the bath. Outside, the chalet benefits from access to well-maintained communal gardens and communal parking areas.

Kings Chalet Park is positioned in a convenient part of Cromer, just a short distance from the coastline, lighthouse and surrounding countryside walks, while the town itself offers a wide range of independent shops, cafés, restaurants and transport links.

Council Tax

Band A.

EPC Rating

F.

Services Connected

Mains water & drainage. Electric supplied via coin meter.

Agent's Notes

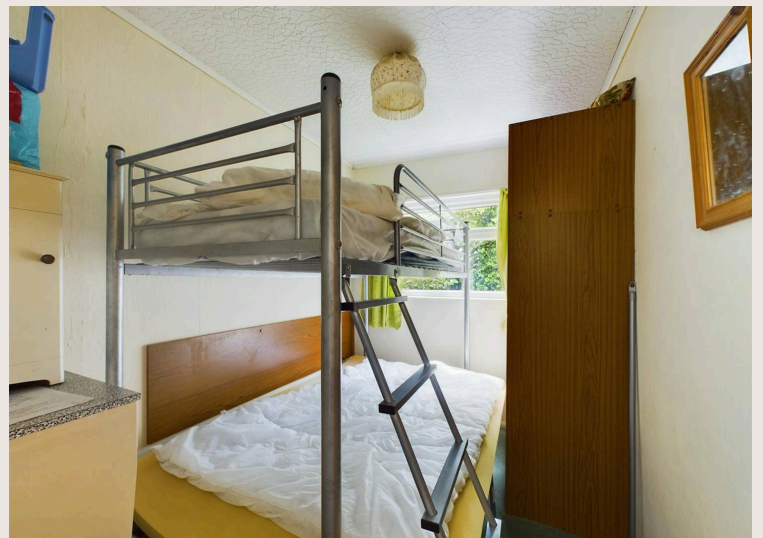
Leasehold.

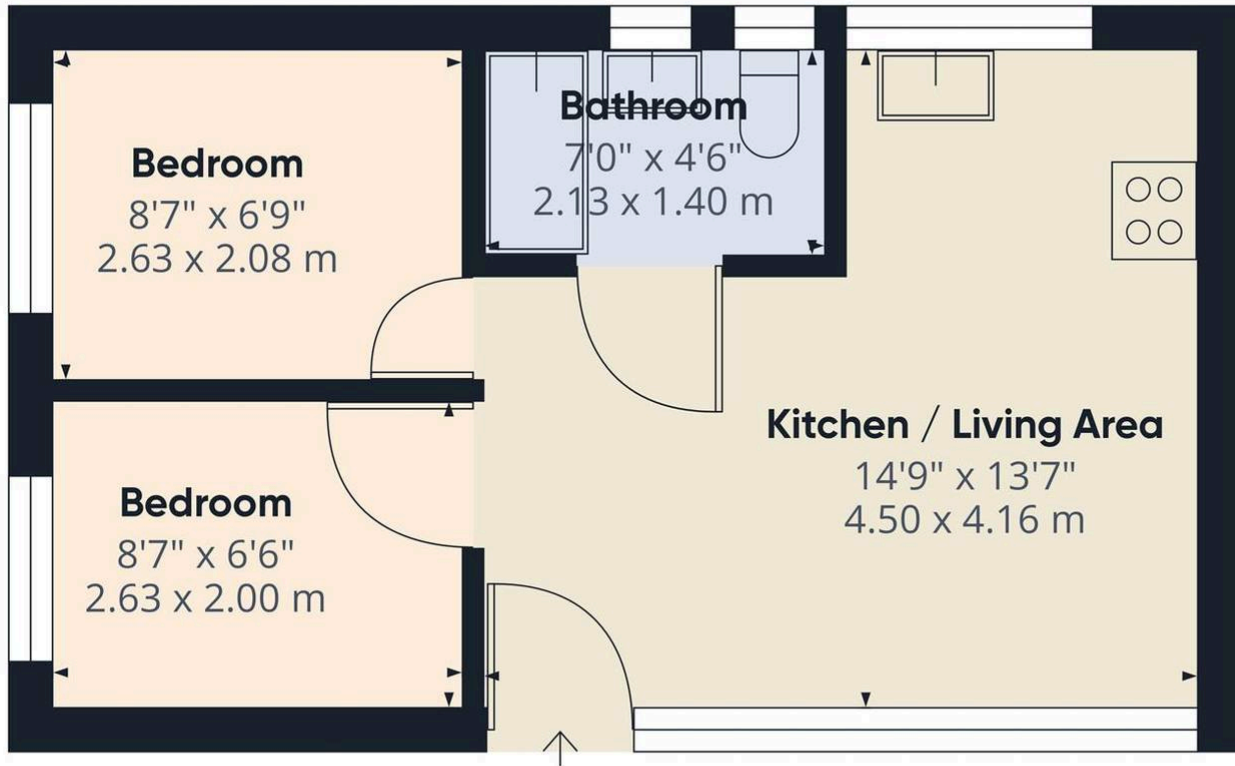
Lease term - 99 years from 1 January 1982.

Approximately 67 years remaining.

Ground rent - £1,879.84 per annum.







Approximate total area⁽¹⁾
315.96 ft²
29.35 m²

(1) Excluding balconies and terraces

While every attempt has been made to ensure accuracy, all measurements are approximate, not to scale. This floor plan is for illustrative purposes only.

GIRAFFE 360

Come in & see us

If you'd like to know more about this home, get in touch or pop into our Cromer branch. Whether it's a quick question about the property or a chat about selling your own home, we're here to help with straightforward advice.



15 West Street, Cromer, Norfolk, NR27 9HZ

01263 511111 • hello@henleyshomes.co.uk • henleyshomes.co.uk

These particulars and measurements whilst believed to be accurate, are set out as a general outline only for guidance and do not constitute any part of an offer or contract. Intending purchasers should not rely on them as statements of representation of fact, but must satisfy themselves by inspection or otherwise as to their accuracy. No person in this firm's employment has the authority to make or give representation or warranty in respect of the property.

