



Dawes Road, SW6

£450,000

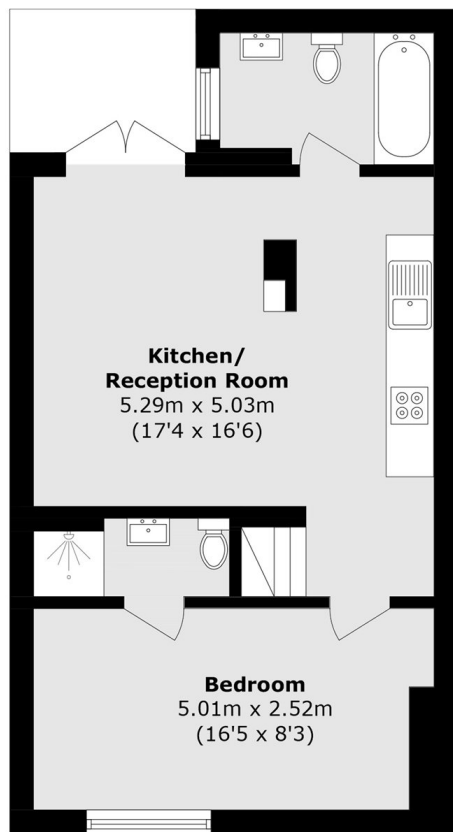
A superb two double bedroom split-level apartment spanning over 600 sq ft. The property benefits from its own entrance, two bathrooms, a private patio and a share of freehold.

The property is ideally situated, equidistant from Parsons Green and Fulham Broadway. It benefits from extensive local amenities and excellent nearby transport links.

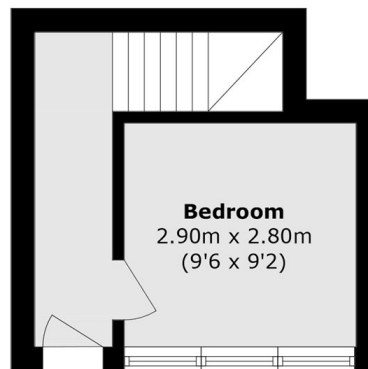
Features

- Two Bedrooms
- Share Of Freehold
- Split-Level
- Private Courtyard
- Two Bathrooms
- Own Entrance

Dawes Road, London, SW6



Lower Ground Floor



Ground Floor

Total Area (approx.): 59.3 sq. m (638.3 sq. ft)