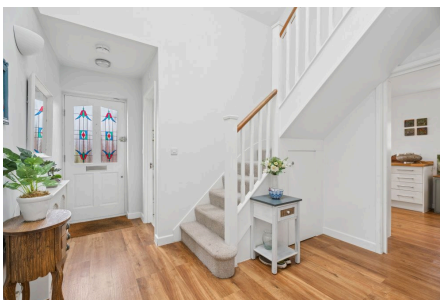


**Rendelsham Way, Chorleywood**

£875,000

3 2 1

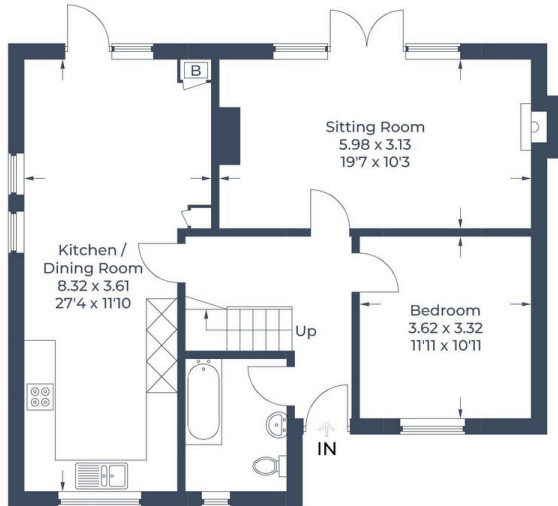


A well-presented three-bedroom detached chalet bungalow, ideally situated in the sought-after village of Chorleywood.

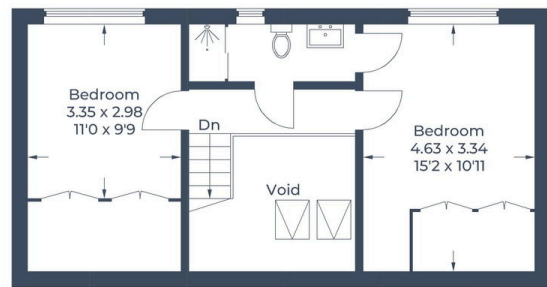
### Key Features

- Three Bedrooms
- Off Road Parking
- Well Presented Kitchen/ Diner
- Close to Chorleywood Station
- Detached Chalet Bungalow
- Attractive Rear Garden
- Close to Chorleywood Village
- En- suite shower room

Approximate Gross Internal Area  
 Ground Floor = 75.0 sq m / 807 sq ft  
 First Floor = 38.4 sq m / 413 sq ft  
 Total = 113.4 sq m / 1,220 sq ft  
 (Excluding Void)



**Ground Floor**



**First Floor**

Illustration for identification purposes only, measurements are approximate, not to scale.  
 © CJ Property Marketing Produced for EXP - Kate Woodward