



143 Restons Crescent, London, SE9 2JH

Offers In Excess Of £500,000

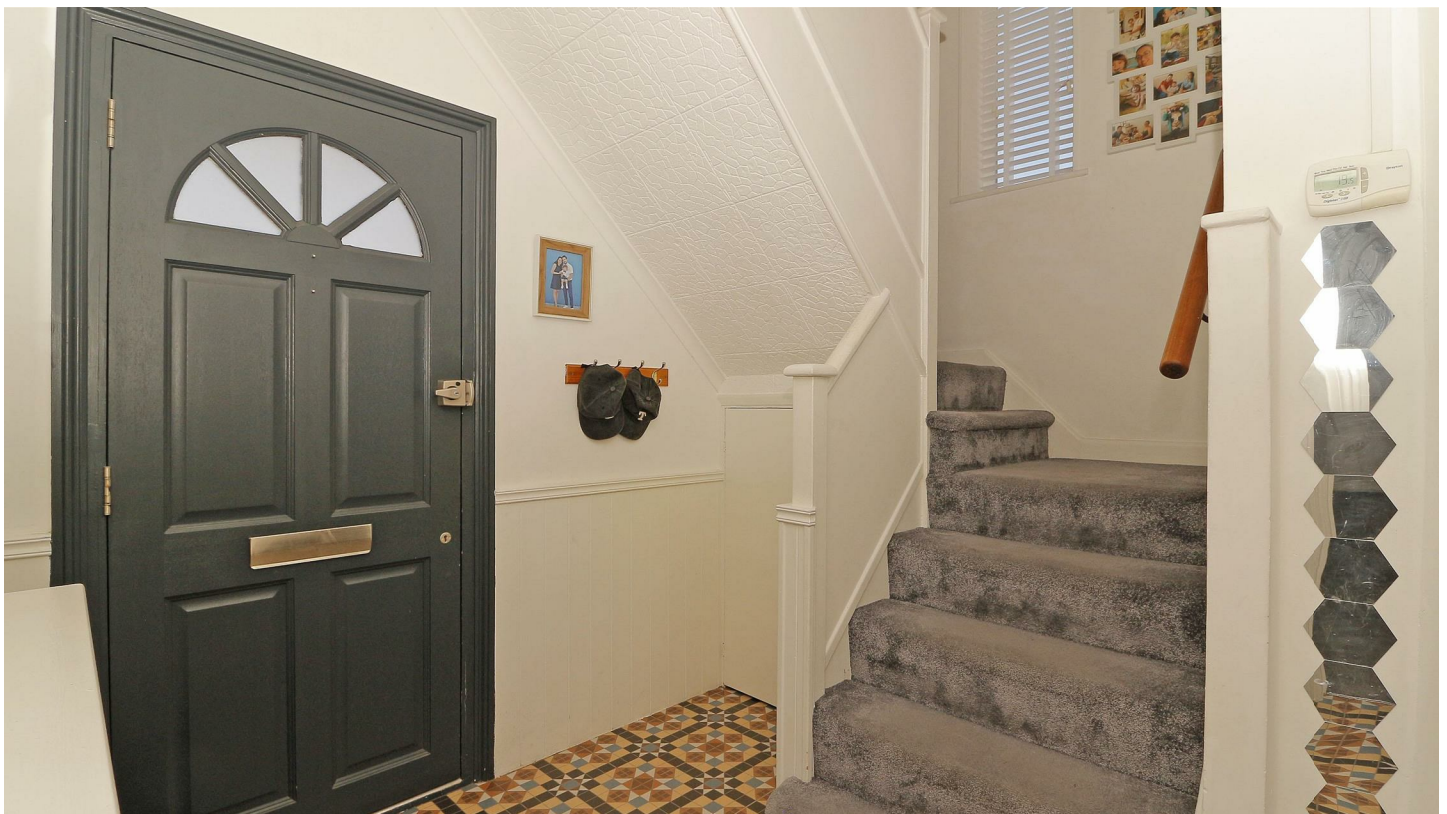
- Three Bedrooms
- Ample Off Street Parking
- Stylish Kitchen
- Semi Detached House
- Backing onto Parkland
- EPC Rating D

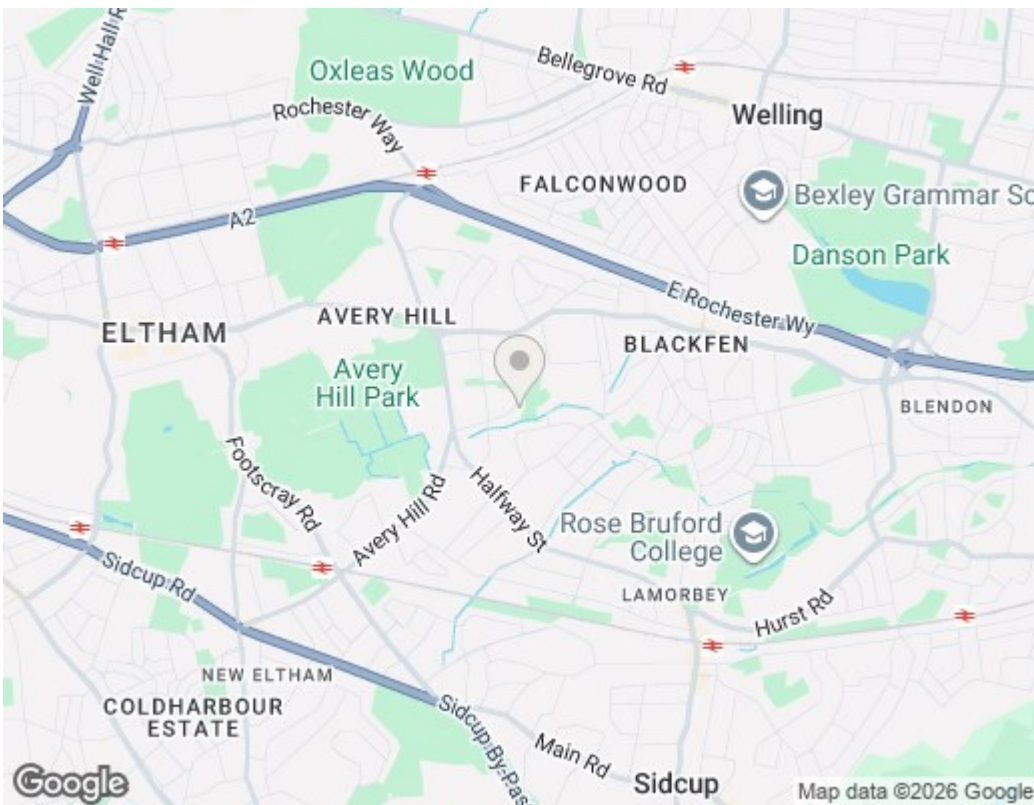
143 Restons Crescent, London SE9 2JH

Occupying a bold corner plot position and backing onto Parish Park is this three bedroom semi detached house. Representing extraordinary value for money the internal accommodation on offer includes two separate reception rooms, a 14'8 stylish kitchen, three well proportioned bedrooms and a family bathroom. However, the external space is when this property really begins to shine! Firstly there is a 355 square foot covered veranda, then the delightful 80ft lawned area and finally a 300 square foot versatile shed/storage unit. The stunning and historic Avery Hill Park is close by and New Eltham Village and station can also be easily reached. A truly wonderful family home that is looking for new owners to come and enjoy it. Must be viewed.



Council Tax Band: D





Viewings

Viewings by arrangement only.
 Call 0208 859 1100 to make an appointment.

EPC Rating:

D

Energy Efficiency Rating		Current	Potential
Very energy efficient - lower running costs			
(92 plus)	A		
(81-91)	B		
(69-80)	C		
(55-68)	D	68	81
(39-54)	E		
(21-38)	F		
(1-20)	G		
Not energy efficient - higher running costs			
England & Wales		EU Directive 2002/91/EC	