



Erridge Road, SW19
£1,795,000

Dexters



Erridge Road, SW19

An exceptional five double bedroom, semi detached house, complete with off street parking for multiple cars. The house has been extended to the side, rear and loft, and benefits further from an integral garage.

The ground floor is accessed through an entrance hallway which leads to a large reception room to the front of the house and an integral garage. To the rear, the owners have extended to create an expansive open plan kitchen/dining/reception room with a large utility room, separate w/c and bi-folding doors leading to the rear garden.

The first floor has four bedrooms and two bathrooms, one of which benefits from a dressing area and Ensuite bathroom. The loft has been further extended to create another generous double bedroom, complete with en-suite bathroom and eaves storage.

The garden has been tastefully landscaped and is laid with tiles and artificial grass. The front of the house is block paved with space for multiple vehicles and a lawn area.

Erridge Road is located in the heart of Merton Park, within close proximity to a number of great schools. Within close proximity to excellent transport links, including the Northern Line and the Thameslink.

Features

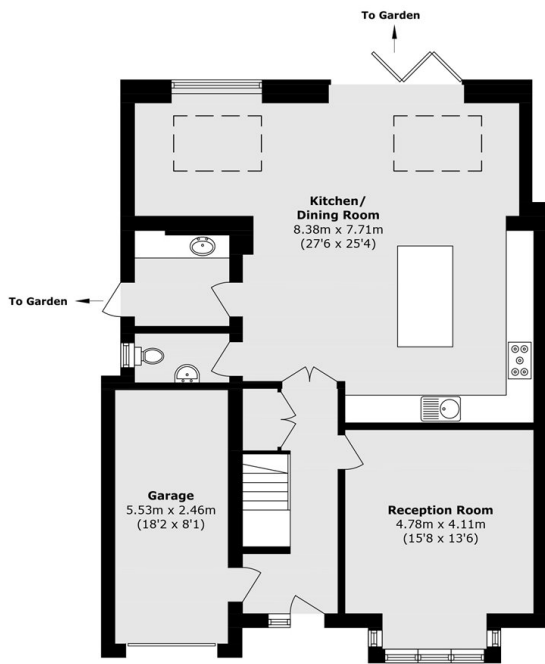
- Five Double Bedrooms
- Three Bathrooms
- Semi Detached
- Off Street Parking
- Side, Loft & Rear Extended
- No Forward Chain



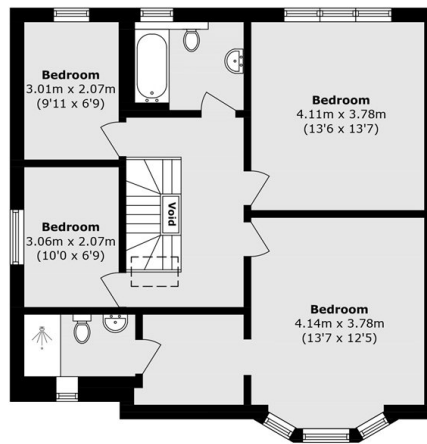




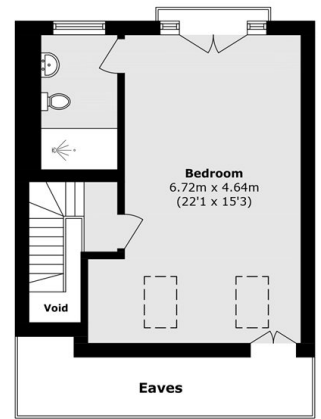
Erridge Road, London, SW19



Ground Floor



First Floor



Second Floor

Total area (approx.): 213.6 sq. m (2299.2 sq. ft)
(Including Garage)
(Excluding Voids & Eaves)