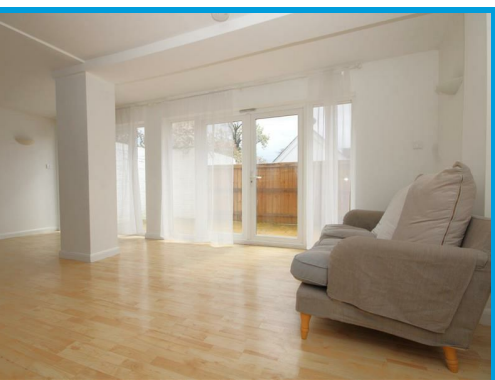




Portsmouth Road, Godalming, Surrey GU8 5HJ

£2,300 PCM

This fantastic four double bedroom end of terrace property is located in the popular leafy area of Milford, close to local shops and within easy access of the mainline train station.



# Description

This fantastic four double bedroom end of terrace property is located in the popular leafy area of Milford.

The ground floor comprises of a hallway with access to one of the two reception rooms, a further large L shape reception room with open plan kitchen with appliances.

The first floor offers master bedroom with en suite, three further double bedrooms and family bathroom. The property further benefits from rear enclosed rear patio garden and easy access to Godalming, Guildford and the A3.

