



Guide Price
£450,000

Freehold

4x  2x  2x 

**Langham Crescent,
Billericay, Essex, CM12**

OVER 60?

Secure this property
for up to **59% less!**

 **DOUGLAS
ALLEN**
Helping you move forwards



Main features

- Double fronted Terraced house
- Large kitchen diner leading to the garden
- Separate lounge and family room
- Large rear garden
- Parking for multiple cars

Accommodation

GROUND FLOOR

Entrance Hall
 Kitchen/Diner: 29'4 x 11'1 (8.95m x 3.38m)
 Lounge: 19'3 x 10'9 (5.87m x 3.28m)
 Family Room: 9'9 x 9'9 (2.97m x 2.97m)
 Storage Room: 8'9 x 5'6 (2.67m x 1.68m)
 Four piece Family Bathroom

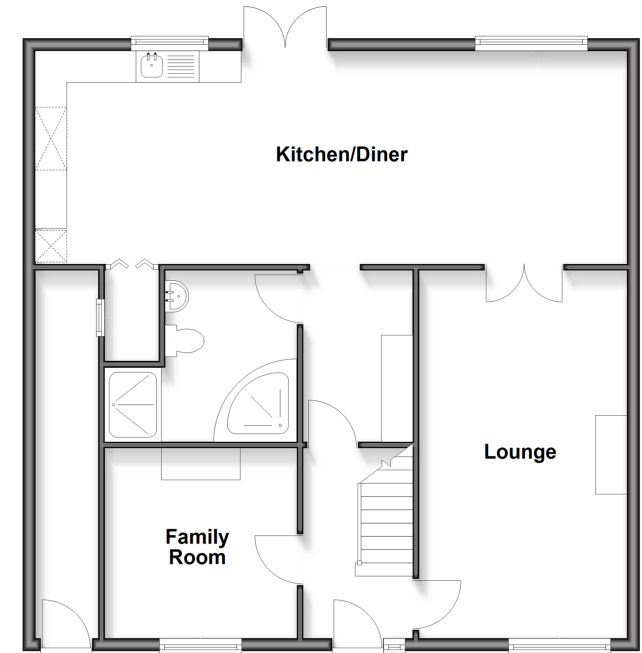
FIRST FLOOR

Landing
 Bedroom 1: 13'8 x 9'9 (4.17m x 2.97m)
 Bedroom 2: 10'9 x 8'9 (3.28m x 2.67m)
 Bedroom 3: 11'0 x 8'2 (3.36m x 2.49m)
 Bedroom 4: 8'8 x 8'8 (2.64m x 2.64m)
 Bathroom

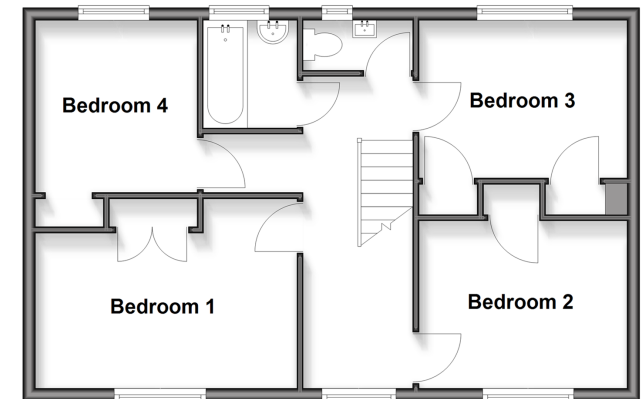
OUTSIDE

Garden
 Driveway

Ground Floor
 Approx. 87.3 sq. metres (939.8 sq. feet)

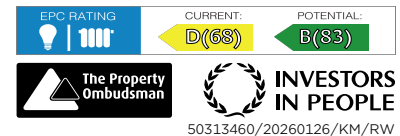


First Floor
 Approx. 54.7 sq. metres (588.9 sq. feet)



Call Billericay - 01277 631377 ■ douglasallen.co.uk

- Legal advice should be taken to verify fixtures/fittings, planning, alterations and/or lease details
- Appliances & services are untested, dimensions are approximate and floor plans are not to scale
- Through a Homewise Home For Life Plan people aged 60+ can secure this property for up to 59% less, by purchasing a Lifetime Lease



50313460/20260126/KM/RW