



Bridgman Road, London, W4

Guide Price £650,000

WHITMAN & CO.

SALES · LETTINGS · COMMERCIAL

- Bespoke 20' kitchen/reception room
- Double bedroom
- 35' landscaped south-facing garden
- Second reception room
- Luxury bathroom
- No onward chain

Tenure - Leasehold
 Lease length - 160 years remaining
 Ground rent - peppercorn
 Service charge - £500 pa
 Local authority - Ealing
 Council tax - Band D

THE PROPERTY

An immaculately presented one/two-bedroom period conversion flat, ideally located on this sought after residential street, with the added benefit of a private 35' south-facing garden and within close proximity of numerous transport facilities.

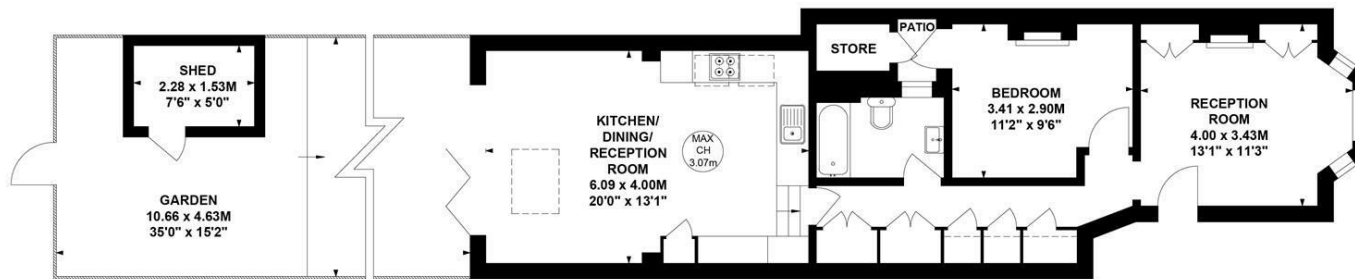
The property comprises a fabulous bespoke 20' kitchen/reception room, double bedroom, luxury bathroom, second reception room, extensive built-in storage, landscaped garden with rear access.

Transport links include South Acton (Overground), Chiswick Park (District & Piccadilly) Stations, local bus routes, and the A4/M4 into and out of town. Offered for sale with no onward chain.

Bridgman Road, W4

Approximate Gross Internal Area
65.16 sq m / 701 sq ft
 (Including Store & Shed)
 Store 1.21 sq m / 13 sq ft
 Shed 3.48 sq m / 37 sq ft

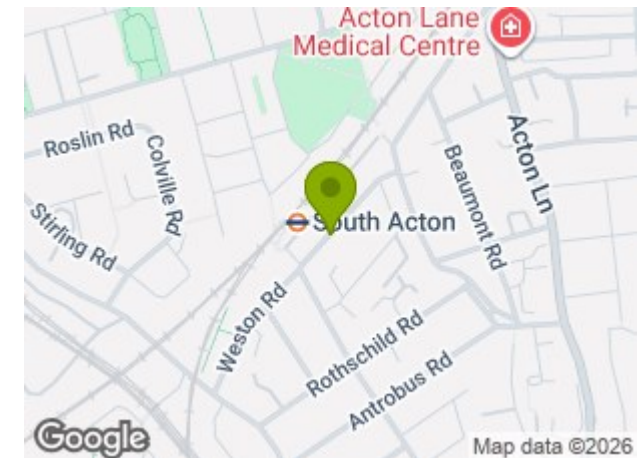
Key :
 CH - Ceiling Height



Ground Floor

Not to scale, for guidance only and must not be relied upon as a statement of fact.
 All measurements and areas are approximate only

SITUATION



5-7 Turnham Green Terrace, Chiswick, London, W4 1RG

Tel 020 8747 8800

E-mail sales@whitmanandco.com

Website www.whitmanandco.com



MISREPRESENTATION ACT 1967

Whitman & Co. for themselves and for the vendors give notice that these particulars do not constitute any part of, an offer of contract. All statements contained in these particulars are made without responsibility on the part of Whitman & Co. or the vendor. None of the statements contained in these particulars is to be relied upon as statements or representations of facts. Any intending purchaser must satisfy himself by inspection or otherwise as to the correctness of each of the statements contained in these particulars. The vendor does not make or give, and neither Whitman & Co. or any person in their employment has any authority to make or give, any representation or warranty whatever in relation to the property.