



183 Haunchwood Road

, Stockingford, CV10 8DG

£850 Per Calendar Month



A well appointed, traditional styled, three bedroomed end terraced house with the benefit of UPVC double glazing, gas fired central heating, walled fore garden, enclosed rear garden.
PART FURNISHED



Spacious lounge (front)

4.14m x 3.43m min x 3.70m max 1.83m min (13'7" max 11'3" min x 12'2" max 6' min)

Having feature live gas fire in attractive Adams style surround, double central heating radiator, walk in UPVC double glazed bay window.

Inner hallway 2'11" x 2'7" (0.88 x 0.79)

Having under stairs cupboard off.

Dining room (rear) 12'2" x 12'2" (3.70 x 3.70)

Having UPVC double glazed windows to rear and side, central heating radiator, room sealed gas fire, staircase to first floor.

Kitchen (rear) 14'1" x 6'11" (4.28 x 2.11)

Having one and a half bowled stainless steel sink unit, range of base and wall units comprising ten base units and nine wall units, associated bevel edged work surfaces, ceramic tiled floor, obscure UPVC double glazed door, UPVC double glazed window, wall mounted fan assisted gas fired combination boiler Worcester CDi 28, washing machine, split level gas hob and electric oven.

Shower room (rear) 5'0" x 4'4" (1.52 x 1.33)

Having fitted shower cubicle with electric shower, ceramic tiled floor, central heating radiator, obscure UPVC double glazed window.

Guest cloakroom (rear) 4'11" x 2'11" (1.51 x 0.90)

Having central heating radiator, obscure UPVC double glazed window, pedestal wash hand basin, low flush w.c, ceramic tiled floor.

First floor landing

Having UPVC double glazed window, central heating radiator.

Bedroom 1 (front) 14'2" x 11'5" (4.33 x 3.49)

Having UPVC double glazed windows to front and side, central heating radiator, fitted cupboard with roof void access.

Bedroom 2 (rear) 12'2" x 11'0" (3.72 x 3.36)

Having central heating radiator, UPVC double glazed window, power points.

Bedroom 3 (rear) 8'9" x 7'2" (2.66 x 2.18)

Having central heating radiator, UPVC double glazed picture window

Bathroom 6'11" x 5'4" (2.12 x 1.62)

Having full suite in white comprising panelled bath, pedestal wash hand basin, low flush w.c, obscure UPVC double glazed window, electric wall heater, down lights to ceiling, ceramic wall tiling, tiled effect floor.

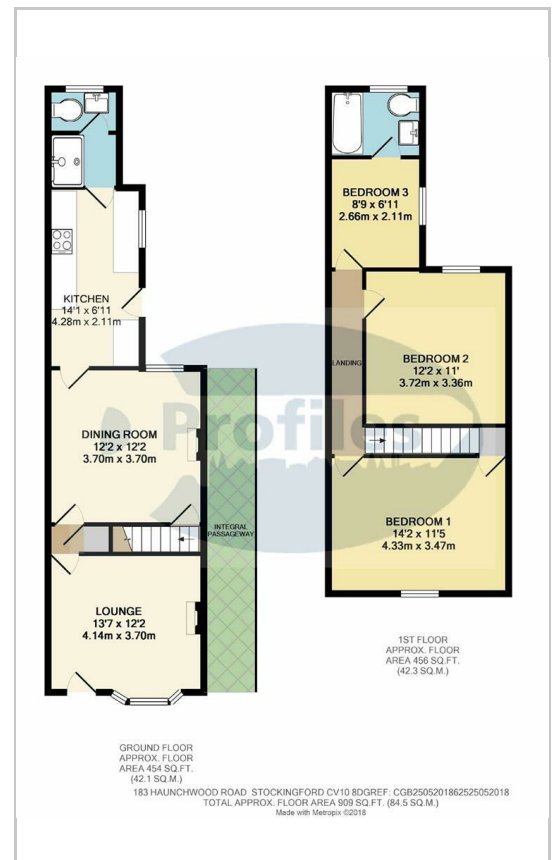
Outside

Having enclosed rear garden, walled front garden.

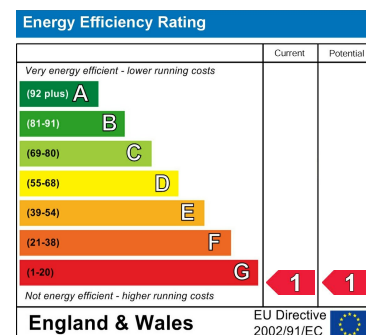
Area Map



Floor Plans



Energy Efficiency Graph



These particulars, whilst believed to be accurate are set out as a general outline only for guidance and do not constitute any part of an offer or contract. Intending purchasers should not rely on them as statements of representation of fact, but must satisfy themselves by inspection or otherwise as to their accuracy. No person in this firm's employment has the authority to make or give any representation or warranty in respect of the property.

28-30 New Buildings, Hinckley, Leicestershire, LE10 1HW

Tel: 01455 613555 Email: profilesea@aol.com <https://www.profiles-estates.co.uk>